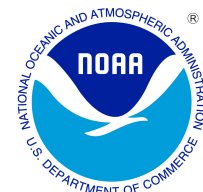




MAY 2006 LOCAL CLIMATOLOGICAL DATA NOAA, National Climatic Data Center

HUNTINGTON, WV
TRI-STATE/M.J.FERGUSON FIELD AIRPORT (KHTS)
 Lat:38 ° 22'N Long: 82 ° 33'W Elev (Ground) 824 Feet
 Time Zone : EASTERN WBAN: 03860 ISSN#: 0198-5655



Date 1	Temperature °F						Deg Days BASE 65°		WEATHER 10	SNOW/ICE ON GND(IN)		PRECIPITATION ON GND(IN)		PRESSURE (INCHES OF HG)		WIND SPEED = MPH DIR = TENS OF DEGREES								Date 24
	MAXIMUM 2	MINIMUM 3	AVERAGE 4	DEP FROM NORMAL 5	AVERAGE DEW PT 6	AVERAGE WET BULB 7	HEATING 8	COOLING 9		0700 LST 11	1300 LST 12	2400 LST 13	2400 LST 14	AVERAGE STATION 15	AVERAGE SEA LEVEL 16	RESULTANT SPEED 17	RES DIR 18	AVERAGE SPEED 19	MAXIMUM					
																			5-SEC		2-MIN			
01	74	54	64	5	44	53	1	0	RA BR	0		0.0	T	29.28	30.17	2.1	13	4.1	14	18	12	18	01	
02	76	50	63	4	50	55	2	0	RA HZ	0		0.0	0.01	29.11	29.99	4.3	23	7.1	23	21	17	23	02	
03	77	54	66	7	49	56	0	1	BR HZ	0		0.0	0.00	29.12	30.00	4.3	30	7.5	25	36	17	33	03	
04	83	54	69	9	55	60	0	4	RA FG+ BR	0		0.0	0.01	29.03	29.92	1.6	22	4.4	18	26	15	25	04	
05	75	54	65	5	50	57	0	0	FG+ FG BR	0		0.0	0.00	28.98	29.86	3.1	32	3.7	14	30	12	23	05	
06	69	52	61	0	42	51	4	0		0		0.0	0.00	29.05	29.96	3.5	36	5.4	17	36	14	35	06	
07	56	48	52*	-9	43	48	13	0	RA HZ	0		0.0	0.02	29.12	30.01	5.6	06	5.9	12	08	9	08	07	
08	69	47	58	-3	47	52	7	0	FG+ BR	0		0.0	0.00	29.11	30.00	3.1	08	3.9	15	07	12	08	08	
09	77	44	61	-1	47	54	4	0	BR	0		0.0	0.00	29.04	29.91	1.7	11	3.5	13	19	10	18	09	
10	75	58	67	5	58	62	0	2	RA HZ	0		0.0	0.02	28.88	29.73	3.5	16	4.8	18	19	14	19	10	
11	69	49	59	-3	50	54	6	0	TS TSRA GR RA BR	0		T	0.39	28.69	29.58	8.3	22	10.4	33	23	26	23	11	
12	61	49	55	-8	45	49	10	0	RA BR	0		0.0	0.01	28.79	29.69	7.4	20	7.6	24	19	17	18	12	
13	72	50	61	-2	46	52	4	0	RA BR	0		0.0	0.07	28.87	29.76	3.8	17	6.0	22	21	18	18	13	
14	58	49	54	-9	46	49	11	0	RA BR	0		0.0	0.01	28.92	29.82	1.7	24	3.8	15	25	12	25	14	
15	60	46	53	-10	45	48	12	0	RA BR	0		0.0	0.04	28.97	29.87	5.0	22	5.4	21	24	17	24	15	
16	63	45	54	-9	47	50	11	0	RA BR HZ	0		0.0	0.09	28.92	29.79	3.3	22	4.6	15	23	12	23	16	
17	70	50	60	-4	49	54	5	0	BR HZ	0		0.0	0.00	28.81	29.68	6.5	23	7.4	21	25	15	23	17	
18	70	46	58	-7	45	50	7	0	TS TSRA RA BR	0		0.0	0.31	28.71	29.61	6.9	25	8.7	38	31	29*	31	18	
19	70	46	58	-7	42	50	7	0	RA	0		0.0	T	28.85	29.75	7.0	24	7.9	26	23	20	25	19	
20	72	50	61	-4	40	50	4	0		0		0.0	0.00	28.95	29.85	4.2	31	5.0	21	31	16	31	20	
21	76	43	60	-5	43	51	5	0	RA	0		0.0	T	28.98	29.90	4.9	29	6.9	24	31	17	30	21	
22	71	47	59	-6	37	48	6	0		0		0.0	0.00	29.18	30.09	5.9	33	6.5	17	31	14	31	22	
23	72	42	57	-8	35	47	8	0		0		0.0	0.00	29.26	30.16	1.9	04	3.7	17	07	12	08	23	
24	78	41*	60	-6	41	51	5	0	BR	0		0.0	0.00	29.19	30.06	1.4	13	2.8	18	12	10	11	24	
25	86	57	72	5	58	63	0	7	TS TSRA RA BR	0		0.0	0.38	28.94	29.80	7.2	20	7.8	38*	29	26	30	25	
26	79	63	71	4	63	65	0	6	TS TSRA RA FG BR	0		0.0	0.40	28.81	29.69	7.2	22	8.1	26	24	21	24	26	
27	85	60	73	6	61	65	0	8	FG BR HZ	0		0.0	0.00	29.03	29.93	1.3	08	2.6	12	08	9	07	27	
28	89	57	73	6	61	66	0	8	FG+ FG BR HZ	0		0.0	0.00	29.20	30.09	2.0	08	2.8	12	05	9	07	28	
29	91	61	76	9	59	66	0	11	FG+ FG BR HZ	0		0.0	0.00	29.23	30.10	0.3	18	1.5	9	24	7	16	29	
30	92	61	77	9	62	67	0	12	FG BR HZ	0		0.0	0.00	29.21	30.08	0.5	14	1.9	10	20	9	19	30	
31	92*	65	79*	11	64	69	0	14	FG BR HZ	0		0.0	0.00	29.20	30.07	1.5	18	3.0	20	15	14	14	31	

74.4	51.4	62.9	☼	49.2	55.2	4.3	2.4	< MONTHLY AVERAGES TOTALS >				T	1.76	29.02	29.90	1.8	23	5.3	< MONTHLY AVERAGES			
-0.2	-1.2	-0.7		<-----DEPARTURE FROM NORMAL----->										-2.65	SUNSHINE, CLOUD, & VISIBILITY TABLES ON PAGE 3							

DEGREE DAYS				GREATEST 24-HR PRECIPITATION : 0.77 DATE : 25-26				SEA LEVEL PRESSURE											
MONTHLY				GREATEST 24-HR SNOWFALL : T DATE : 11				MAXIMUM : 30.24 DATE 01 TIME 1048											
TOTAL DEPARTURE				GREATEST SNOW DEPTH : 0 DATE :				MINIMUM : 29.46 DATE 11 TIME 0551											
SEASON TO DATE				NUMBER OF -> DAYS WITH				MAXIMUM TEMP >= 90 : 0				MINIMUM TEMP <= 32 : 0				PRECIPITATION >= 0.01 INCH : 13			
HEATING : 132 16 4058 -511				MAXIMUM TEMP <= 32 : 0				MINIMUM TEMP <= 0 : 0				PRECIPITATION >= 0.10 INCH : 4							
COOLING : 73 -9 119 4				THUNDERSTORMS : 4				HEAVY FOG : 5				SNOWFALL >= 1.0 INCH : 0							

MAY 2006
HUNTINGTON, WV

HOURLY PRECIPITATION

(WATER EQUIVALENT IN INCHES)

HUNTINGTON, WV (KHTS)
MAY 2006

WBAN # 03860

Date	FOR HOUR (LST) ENDING AT												Date	FOR HOUR (LST) ENDING AT												Date	Sum of Hourly Data	2400 LST Water Equiv.
	1	2	3	4	5	6	7	8	9	10	11	12		13	14	15	16	17	18	19	20	21	22	23	24			
01	T												01												01	T	T	
02													02			T									02	0.01	0.01	
03													03												03	0.00	0.00	
04			T										04						0.01						04	0.01	0.01	
05													05												05	0.00	0.00	
06													06												06	0.00	0.00	
07													07	0.01	0.01	T									07	0.02	0.02	
08													08												08	0.00	0.00	
09													09												09	0.00	0.00	
10	T												10	0.01	T		T	T	0.01						10	0.02	0.02	
11													11	0.03											11	0.39	0.39	
12						0.04	0.24	T	T				12												12	0.01	0.01	
13	T	T	T								0.01		13												13	0.07	0.07	
14	T		T	T	0.01	T	T						14												14	0.01	0.01	
15		T	T									T	15												15	0.04	0.04	
16													16												16	0.09	0.09	
17							T	0.01	T				17				0.08								17	0.00	0.00	
18		T	0.12	0.03									18			0.09	0.05	0.01	0.01						18	0.31	0.31	
19					T								19												19	T	T	
20													20												20	0.00	0.00	
21												T	21		T	T									21	T	T	
22													22												22	0.00	0.00	
23													23												23	0.00	0.00	
24													24												24	0.00	0.00	
25				T	0.01								25												25	0.38	0.38	
26	0.07	0.10	0.02	T						0.01	0.01		26		T	0.18		T	0.01	T				26	0.40	0.40		
27													27												27	0.00	0.00	
28													28												28	0.00	0.00	
29													29												29	0.00	0.00	
30													30												30	0.00	0.00	
31													31												31	0.00	0.00	

* Indicates sum of Hourly and Daily disagree.

MAXIMUM SHORT DURATION PRECIPITATION (See Note)

Time Period (Minutes)	5	10	15	20	30	45	60	80	100	120	150	180
Precipitation (Inches)	0.15	0.20	0.22	0.25	0.28	0.28	0.28	0.31	0.32	0.32	0.35	0.39
Ending Date	11	11	11	11	11	11	11	25	25	25	25	26
Ending Time (Hr/Min)	0603	0607	0612	0618	0626	0626	0626	2229	2239	2239	2345	0011

Note : The hourly and daily precipitation totals are printed in the last 2 columns and hi-lighted in red when they disagree. NWS does not edit ASOS hourly values but may edit daily and monthly totals. Hourly, daily, and monthly totals are printed as reported by the ASOS site.

Date and time are not entered for TRACE amounts.

REFERENCE NOTES & SUPPLEMENTAL SUMMARIES

* = Extreme for the month (last occurrence if more than one).

T = Trace precipitation amount.

+ = also occurs on earlier date.

FG+ = Heavy fog, visibility .25 miles or less.

BLANK entries denote missing or unreported data.

Resultant wind is the vector sum of the wind speeds and directions divided by the number of observations.

Wind direction is recorded in tens of degrees (2 digits) clockwise from true north. '00' = calm, 'VR' = variable.

Precipitation is for the 24-hour period ending at the time indicated in the column heading.

Water Equivalent of snow on the ground is reported only when the depth is 2 or more inches.

NORMALS ARE FOR THE YEARS 1971-2000

WEATHER NOTATIONS

QUALIFIER	WEATHER PHENOMENA		
DESCRIPTOR	PRECIPITATION	OBSCURATION	OTHER
BC Patches	DZ Drizzle	BR Mist	DS Duststorm
BL Blowing	GR Hail	DU Widespread Dust	FC Funnel Cloud
DR Low Drifting	GS Small Hail and/or Snow Pellets	FG Fog	+FC Tornado Waterspout
FZ Freezing	IC Ice Crystals	FU Smoke	PO Well-Developed Dust/Sand Whirls
MI Shallow	PL Ice Pellets	HZ Haze	
PR Partial	RA Rain	PY Spray	SQ Squalls
SH Shower(s)	SG Snow Grains	SA Sand	SS Sandstorm
TS Thunderstorm	SN Snow	VA Volcanic Ash	GL Glaze
VC In the Vicinity	UP Unkown Precipitation		

Intensity (as indicated on pages 4 to 6):
'+' = Heavy '' = Moderate '-' = Light

HUNTINGTON, WV MAY 2006

Ceilometer (30-second) data are used to derive cloudiness at or below 12,000 feet. This cloudiness is the mean cloud cover detected during sunrise to sunset (SR-SS), or midnight to midnight (MN-MN).

Satellite data are used to derive cloudiness above 12,000 feet. Effective Cloud Amount is based on the cloud cover and the transparency of the clouds within the satellite field of view (approx. 31x31 miles).

Sky Condition is based on the sum (not to exceed 8) of the sunrise to sunset cloud cover below and above 12,000 feet. Both ceilometer and satellite data must be present to compute Sky Condition. Clear = 0-2 oktas, Partly Cloudy = 3-6 oktas, Cloudy = 7-8 oktas.

A Heating (Cooling) Degree Day is the difference between the average daily temperature and 65 degrees F. The HDD season begins July 1, the CDD season begins January 1.

Dew Point is the temperature to which the air must be cooled to achieve 100% relative humidity. Wet Bulb is the temperature the air would have if cooled to saturation at constant pressure by evaporation of water into it.

Snow Depth, Snowfall, and Sunshine data may come from nearby sites that the National Weather Service deems Climatologically representative of this site.

ADDITIONAL NOTES:

Date	SUNSHINE		CLOUDINESS (OKTAS)				VISIBILITY (MILES)		RESERVED
	TOTAL MINUTES	PERCENT POSSIBLE	SR-SS		MN-MN		MINIMUM	MAXIMUM	
			Sky Cover	Satellite	Sky Cover	Satellite			
01							0.75	10.00	
02							6.00	10.00	
03							5.00	10.00	
04							1.25	10.00	
05							0.25	10.00	
06							10.00	10.00	
07							7.00	10.00	
08							0.00	10.00	
09							0.75	10.00	
10							6.00	10.00	
11							7.00	10.00	
12							7.00	10.00	
13							4.00	10.00	
14							6.00	10.00	
15							3.00	10.00	
16							1.50	10.00	
17							3.00	10.00	
18							2.50	10.00	
19							7.00	10.00	
20							10.00	10.00	
21							10.00	10.00	
22							10.00	10.00	
23							10.00	10.00	
24							6.00	10.00	
25							2.50	10.00	
26							1.75	10.00	
27							0.50	10.00	
28							0.25	10.00	
29							0.50	10.00	
30							1.00	9.00	
31							0.50	8.00	
MONTHLY AVGS							4.23	9.90	
SUNSHINE (Minutes)									
Total :					Possible :				
Percent Possible :									
NUMBER OF DAYS WITH :									
SKY CONDITION									
Clear		Partly CLDY			Cloudy			Missing	
MINIMUM VISIBILITY (MILES)									
<= .25			<= 3.0				>= 7.0		
3			16				9		

OBSERVATIONS AT 3-HOURLY INTERVALS

HUNTINGTON, WV
MAY 2006 KHTS

WBAN # 03860

Table with columns for HOUR (LST), SKY COVER, CEILING, SATELLITE, WEATHER, TEMPERATURE (DRY BULB, DEW POINT, WET BULB, RELATIVE HUMIDITY), WIND (SPEED, DIRECTION), and PRESSURE (STATION, SEA LEVEL). Rows are grouped by date and time intervals (Sunrise and Sunset). Includes weather conditions like OVC, CLR, SCT, BKN, FEW, HZ, BR, FG, RA, and visibility values.

OBSERVATIONS AT 3-HOURLY INTERVALS

HUNTINGTON, WV
MAY 2006 KHTS

WBAN # 03860

HOUR (LST)	SKY COVER	CEILING 100's of FT.	SATELLITE		WEATHER	TEMPERATURE °F			WIND SPEED (MPH) DIRECTION Tens of Deg	PRESSURE (INCHES, HG)			
			Observation Time (LST)	Eff Cl'd Amt Oktas		VISIBILITY (MILES)	DRY BULB	DEW POINT		WET BULB	RELATIVE HUMIDITY (PCT)	STATION	SEA LEVEL
SUNRISE: 0510 MAY 25 SUNSET: 1940													
01	CLR	NC				59	48	53	67	0	00	29.03	29.90
04	OVC	100			-RA	61	51	55	70	7	17	28.98	29.85
07	SCT	085				62	57	59	84	8	19	28.99	29.86
10	SCT	048				67	61	63	81	8	21	28.98	29.86
13	FEW	043				83	61	69	48	12	23	28.95	29.81
16	CLR	NC				85	61	69	45	13	18	28.86	29.73
19	CLR	NC				81	60	68	49	8	19	28.82	29.68
22	OVC	040			TSRA BR	63	59	61	87	6	17	28.94	29.81
SUNRISE: 0509 MAY 26 SUNSET: 1941													
01	OVC	110			-TSRA	64	60	62	87	10	18	28.83	29.70
04	BKN	100				63	60	61	90	8	20	28.80	29.67
07	OVC	090			RA BR	64	60	62	87	8	21	28.82	29.69
10	FEW	021				72	63	66	73	8	22	28.82	29.69
13	FEW	033				79	63	69	58	13	25	28.79	29.65
16	FEW	110				76	67	70	74	8	22	28.79	29.66
19	FEW	065				76	63	68	64	9	25	28.81	29.68
22	CLR	NC			BR	67	64	65	90	3	11	28.88	29.75
SUNRISE: 0509 MAY 27 SUNSET: 1942													
01	CLR	NC			BR	65	62	63	90	3	21	28.91	29.78
04	CLR	NC			FG	61	58	59	90	0	00	28.95	29.82
07	CLR	NC			HZ	67	62	64	84	0	00	29.03	29.90
10	CLR	NC				76	62	67	62	3	VR	29.08	29.94
13	BKN	035				81	61	68	51	0	00	29.08	29.96
16	FEW	045				83	61	69	48	8	07	29.08	29.95
19	CLR	NC				78	61	67	56	5	08	29.09	29.96
22	CLR	NC			HZ	69	62	65	79	0	00	29.15	30.02
SUNRISE: 0508 MAY 28 SUNSET: 1943													
01	CLR	NC			BR	63	60	61	90	6	10	29.16	30.03
04	FEW	001			BR	60	57	58	90	5	09	29.17	30.05
07	CLR	NC			BR	63	60	61	90	0	00	29.22	30.11
10	CLR	NC				79	64	69	60	7	11	29.26	30.14
13	CLR	NC				85	62	70	46	6	09	29.24	30.12
16	FEW	060				88	62	71	42	3	VR	29.20	30.08
19	CLR	NC				83	60	68	46	3	06	29.19	30.07
22	CLR	NC				71	63	66	76	0	00	29.21	30.08
SUNRISE: 0508 MAY 29 SUNSET: 1943													
01	CLR	NC			BR	65	62	63	90	0	00	29.22	30.09
04	CLR	NC			BR	64	61	62	90	3	36	29.23	30.10
07	CLR	NC			BR	66	62	64	87	0	00	29.27	30.14
10	CLR	NC				83	65	71	55	0	00	29.28	30.15
13	CLR	NC				87	57	68	36	0	00	29.26	30.13
16	CLR	NC				91	46	65	21	6	19	29.21	30.08
19	CLR	NC				86	56	67	36	0	00	29.18	30.06
22	CLR	NC				72	62	66	71	0	00	29.22	30.09
SUNRISE: 0507 MAY 30 SUNSET: 1944													
01	CLR	NC			HZ	66	61	63	84	0	00	29.22	30.10
04	CLR	NC			BR	63	60	61	90	0	00	29.21	30.08
07	CLR	NC			BR	66	62	64	87	0	00	29.25	30.12
10	CLR	NC			HZ	83	67	72	59	5	07	29.26	30.13
13	CLR	NC			HZ	89	60	70	38	5	11	29.23	30.10
16	CLR	NC				90	60	70	37	0	00	29.17	30.04
19	CLR	NC			HZ	86	61	70	43	0	00	29.16	30.04
22	CLR	NC			HZ	74	65	68	74	0	00	29.20	30.07

HOUR (LST)	SKY COVER	CEILING 100's of FT.	SATELLITE		WEATHER	TEMPERATURE °F			WIND SPEED (MPH) DIRECTION Tens of Deg	PRESSURE (INCHES, HG)									
			Observation Time (LST)	Eff Cl'd Amt Oktas		VISIBILITY (MILES)	DRY BULB	DEW POINT		WET BULB	RELATIVE HUMIDITY (PCT)	STATION	SEA LEVEL						
SUNRISE: 0507 MAY 31 SUNSET: 1945																			
01	CLR	NC				2.50						68	63	65	84	0	00	29.20	30.07
04	CLR	NC				1.25						67	63	65	87	0	00	29.20	30.07
07	CLR	NC				1.00						69	64	66	84	0	00	29.23	30.10
10	CLR	NC				5.00						84	65	71	53	0	00	29.23	30.10
13	CLR	NC				5.00						91	66	74	44	3	VR	29.22	30.09
16	CLR	NC				4.00						90	65	73	44	13	14	29.17	30.04
19	CLR	NC				8.00						83	63	70	51	5	19	29.17	30.05
22	CLR	NC				7.00						74	63	67	69	0	00	29.20	30.07

3-HOURLY OBSERVATION NOTES

Sky Cover is the amount of the sky obscured. CLR or SKC = 0, FEW = 1/8-2/8, SCT = 3/8-4/8, BKN = 5/8-7/8, OVC = 8/8, W = Vertical Visibility = 8/8

Ceiling is reported in hundreds of feet above ground level for clouds at or below 12,000 feet. NC = No Ceiling detected.

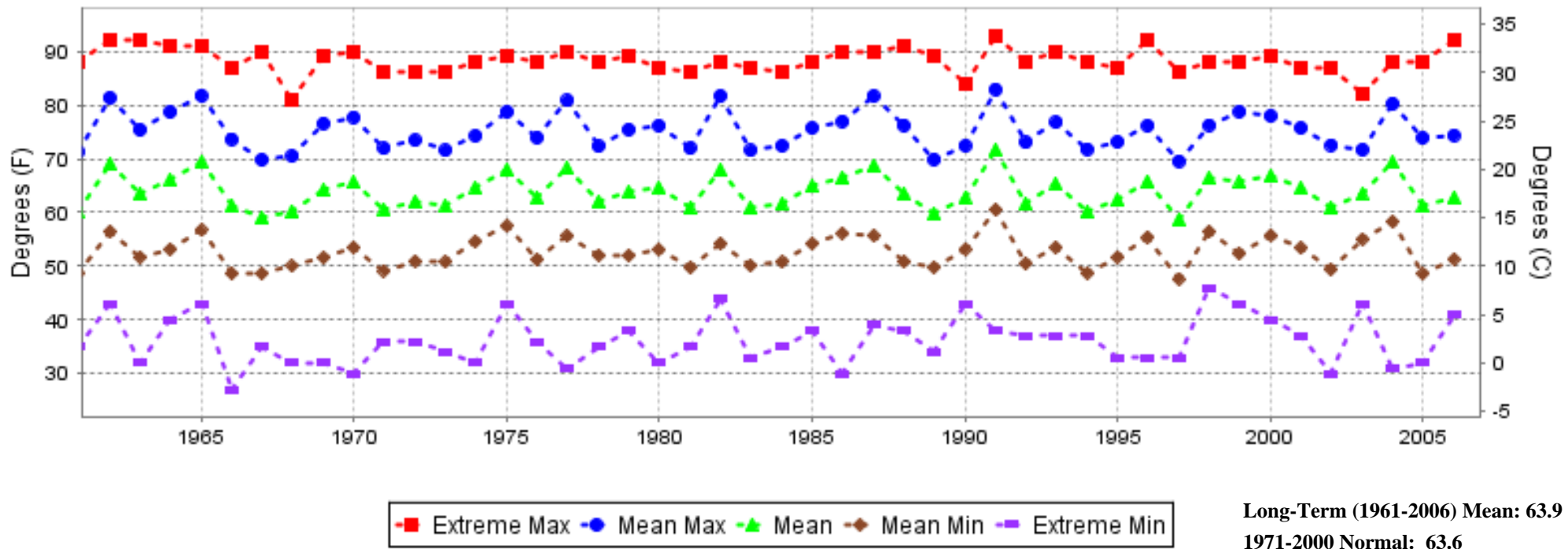
& = Original observation contained additional weather elements.

See page 3 for additional notes.

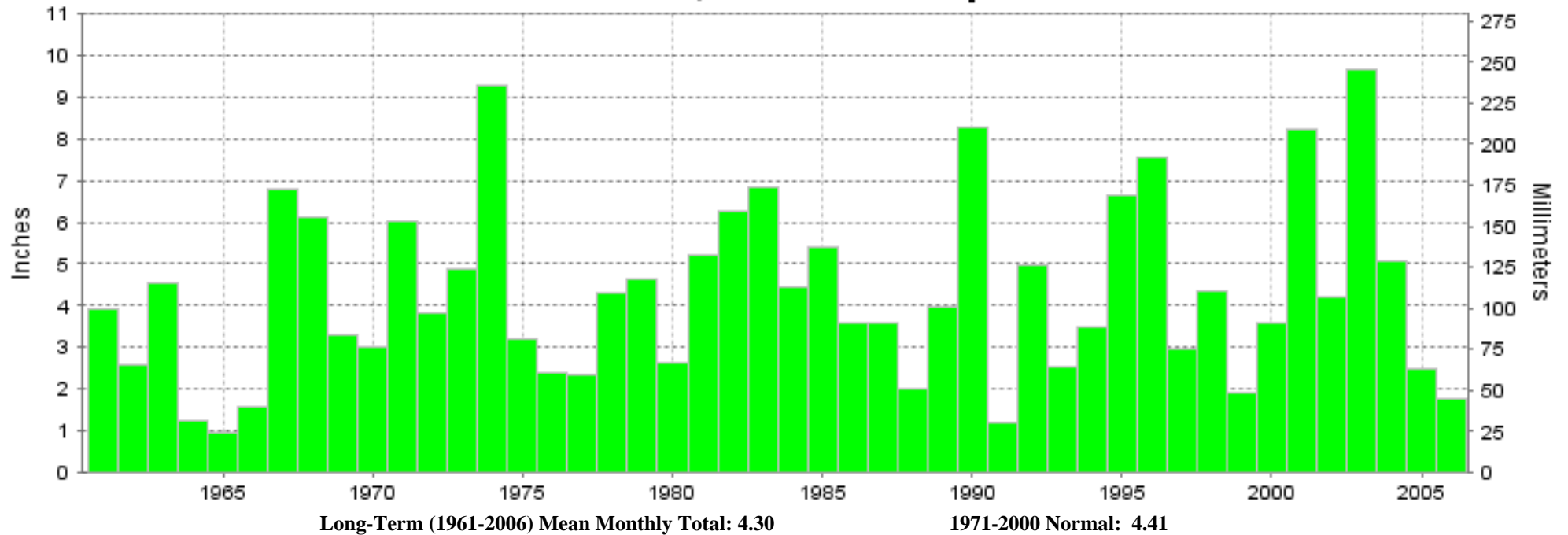
SUMMARY BY HOUR

HOUR (LST)	AVERAGES								RESULTANT WIND (MPH)			
	CEILOMETER	EFF CLD AMT	DRY BULB	DEW POINT	WET BULB	RELATIVE HUMIDITY	PRESSURE (Inches, HG)		VISIBILITY (Miles)	WIND SPEED (MPH)	SPEED	DIRECTION
							STATION	SEA LEVEL				
01			56	49	52	80	29.02	29.90	7.25	3	2	16
02			55	49	52	81	29.01	29.89	7.28	3	2	19
03			55	49	52	81	29.01	29.89	6.83	3	2	17
04			54	49	52	82	29.01	29.89	7.10	4	2	18
05			54	48	51	83	29.01	29.89	6.94	4	2	19
06			54	48	51	83	29.03	29.91	6.65	4	2	18
07			56	49	52	80	29.04	29.92	7.06	5	2	22
08			59	50	54	73	29.05	29.93	8.32	6	2	21
09			62	50	56	66	29.05	29.94	8.74	6	3	23
10			65	50	57	59	29.05	29.93	9.42	6	3	24
11			68	49	57	53	29.05	29.93	9.19	8	4	24
12			70	49	58	49	29.04	29.92	9.58	8	5	25
13			71	48	58	47	29.03	29.91	9.45	8	5	25
14			71	48	58	45	29.02	29.89	9.42	8	5	25
15			71	48	58	46	29.01	29.89	9.37	8	6	25
16			71	48	58	47	29.00	29.88	9.15	8	4	24
17			71	49	58	48	29.00	29.88	9.42	7	3	24
18			70	49	58	50	28.99	29.87	9.42	6	3	24
19			68	49	57	54	28.99	29.88	9.48	5	2	21
20			65	49	56	59	29.00	29.88	9.58	4	2	20
21			63	50	56	65	29.01	29.89	9.42	4	2	17
22			60	50	55	71	29.03	29.91	8.45	3	2	16
23			59	50	54	74	29.02	29.90	8.57	3	3	18
24			58	50	54	77	29.02	29.90	7.69	4	2	17

HUNTINGTON, WV MAY Temperatures



HUNTINGTON, WV MAY Precipitation





MAY 2006
HUNTINGTON, WV

LOCAL CLIMATOLOGICAL DATA NOAA, National Climatic Data Center

I certify that this is an official publication of the National Oceanic and Atmospheric Administration (NOAA). It is compiled using information from weather observing sites operated by NOAA-National Weather Service / Department Of Transportation-Federal Aviation Administration and received at the National Climatic Data Center (NCDC), Asheville, North Carolina 28801.

DIRECTOR

NCDC now offers an annual online subscription for the **Edited Local Climatological Data Publication**. When you purchase this subscription service, you will have **immediate online access** to all previous publications back to July 1996 and all publications thereafter until the expiration of the subscription. Your subscription is valid for one year after purchase. **The total cost for online delivery (including back issues) is significantly less than the cost for offline delivery.** To order this and other subscriptions online with your credit card, go to: www.ncdc.noaa.gov and choose subscriptions.

We welcome your questions or comments, please contact us at:

Toll Free Number (866) 742-3322 (voice)

Fax Number : (304) 726-4409

TDD : (828) 271-4010

or Email : ncdc.info@noaa.gov

Local Climatological Data is available at www.ncdc.noaa.gov

United States
Department of Commerce

National Oceanic and
Atmospheric Administration

National Environmental Satellite
Atmospheric Administration

For address correction, please return a photocopy of this page to Subscription Services indicating changes

NCDC Subscription Services Center
310 State Route 956 Building 300
Rocket Center, WV 26726

OFFICIAL BUSINESS, PENALTY FOR PRIVATE USE \$300

FIRST CLASS
POSTAGE AND FEES PAID
NOAA
PERMIT G-19