



AUGUST 2006

LOCAL CLIMATOLOGICAL DATA

NOAA, National Climatic Data Center

HUNTINGTON, WV
 TRI-STATE/M.J.FERGUSON FIELD AIRPORT (KHTS)
 Lat:38° 22'N Long: 82° 33'W Elev (Ground) 824 Feet
 Time Zone : EASTERN WBAN: 03860 ISSN#: 0198-5655



Date 1	Temperature °F						Deg Days BASE 65°		WEATHER 10	SNOW/ICE ON GND(IN)		PRECIPITATION ON GND(IN)		PRESSURE (INCHES OF HG)		WIND SPEED = MPH DIR = TENS OF DEGREES								Date 24
	MAXIMUM 2	MINIMUM 3	AVERAGE 4	DEP FROM NORMAL 5	AVERAGE DEW PT 6	AVERAGE WET BULB 7	HEATING 8	COOLING 9		0700 LST	1300 LST	2400 LST	2400 LST	AVERAGE STATION 15	AVERAGE SEA LEVEL 16	RESULTANT SPEED 17	RES DIR 18	AVERAGE SPEED 19	MAXIMUM					
																			5-SEC		2-MIN			
2	3	4	5	6	7	8	9	11	12	13	14	15	16	17	18	19	20	21	22	23				
01	95	72	84	9	72	75	0	19	TS FG+ FG BR HZ	0		0.0	0.00	29.14	30.01	0.9	17	2.6	18	32	15	32	01	
02	96	74	85	10	72	76	0	20	BR HZ	0		0.0	0.00	29.11	29.97	3.3	23	4.0	14	23	12	24	02	
03	98*	76	87*	12	71	75	0	22	BR HZ	0		0.0	0.00	29.05	29.91	4.4	24	5.7	22	35	16	35	03	
04	88	69	79	4	67	71	0	14	RA BR HZ	0		0.0	T	29.11	29.99	3.8	35	5.4	16	01	13	36	04	
05	90	66	78	3	63	68	0	13	BR	0		0.0	0.00	29.18	30.05	5.7	07	6.1	18	04	14	08	05	
06	96	68	82	7	69	73	0	17	TS HZ	0		0.0	0.00	29.17				5.0	15	22	12	31	06	
07	96	73	85	10	71	74	0	20	RA BR HZ	0		0.0	0.08	29.21	30.09	2.8	23	4.6	28	24	21	23	07	
08	89	72	81	6	69	72	0	16	TS RA BR HZ	0		0.0	T	29.21	30.09	2.4	03	3.1	16	04	10	04	08	
09	87	69	78	3	68	70	0	13	RA FG+ BR HZ	0		0.0	0.17	29.18	30.04	1.0	11	2.7	17	18	10	23	09	
10	86	72	79	4	71	73	0	14	RA BR HZ	0		0.0	T	29.03	29.90	1.5	25	3.3	9	36	7	20	10	
11	82	73	78	3	66	69	0	13	RA BR HZ	0		0.0	T	29.01	29.89	3.8	01	4.3	12	04	9	04	11	
12	79	65	72	-3	63	66	0	7	BR HZ	0		0.0	0.00	29.10	29.98	5.1	07	5.9	15	08	13	09	12	
13	87	61	74	0	63	67	0	9	FG+ FG BR HZ	0		0.0	0.00	29.15	30.03	1.1	14	2.6	13	25	9	21	13	
14	90	71	81	7	68	72	0	16	BR HZ	0		0.0	0.00	29.08	29.95	5.8	20	6.2	20	20	14	22	14	
15	87	64	76	2	61	67	0	11	RA BR HZ	0		0.0	0.01	29.10	29.98	3.6	32	4.7	18	27	15	26	15	
16	90	59	75	1	57	64	0	10	FG+ FG BR HZ	0		0.0	0.00	29.22	30.10	2.8	05	3.7	22	07	14	06	16	
17	93	61	77	3	59	66	0	12	BR	0		0.0	0.00	29.23	30.11	2.3	10	3.8	13	08	10	06	17	
18	89	64	77	3	65	68	0	12	RA BR HZ	0		0.0	T	29.20	30.07	1.9	15	3.5	23	23	16	24	18	
19	91	71	81	7	70	71	0	16	TS TSRA RA FG+ FG BR HZ	0		0.0	0.36	29.10	29.97	5.0	20	5.9	35*	27	24*	26	19	
20	83	68	76	2	67	70	0	11	RA BR HZ	0		0.0	T	29.08	29.97	1.4	24	3.7	14	32	10	35	20	
21	84	62	73	-1	59	64	0	8	BR	0		0.0	0.00	29.21	30.10	0.9	05	2.3	10	09	8	05	21	
22	87	59	73	-1	59	64	0	8	FG+ BR HZ	0		0.0	0.00	29.21	30.09	0.1	04	1.9	12	07	10	04	22	
23	88	58*	73	-1	58	64	0	8	FG+ FG BR HZ	0		0.0	0.00	29.15	30.03	0.2	32	2.0	10	33	8	23	23	
24	90	61	76	2	61	66	0	11	FG+ FG BR HZ	0		0.0	0.00	29.10	29.97	1.1	18	2.3	13	11	10	10	24	
25	93	62	78	5	65	69	0	13	FG BR HZ	0		0.0	0.00	29.08	29.95	1.9	23	3.0	14	19	10	21	25	
26	93	70	82	10	69	73	0	17	FG+ FG BR HZ	0		0.0	0.00	29.11	29.99	1.9	21	3.6	16	27	12	21	26	
27	91	72	82	10	70	73	0	17	TS TSRA RA FG BR HZ	0		0.0	0.31	29.10	29.97	4.1	21	5.7	18	23	14	25	27	
28	86	72	79	7	71	73	0	14	TS TSRA RA FG+ FG BR HZ	0		0.0	0.03	29.03	29.89	3.7	18	4.3	20	16	14	18	28	
29	87	74	81	9	72	74	0	16	TSRA RA BR HZ	0		0.0	0.12	28.94	29.81	4.7	21	5.6	15	25	13	25	29	
30	78	67	73	1	69	70	0	8	TS TSRA RA FG+ FG BR HZ	0		0.0	3.25	28.99	29.87	2.3	04	2.9	25	06	18	31	30	
31	74	67	71*	0	67	68	0	6	RA BR HZ	0		0.0	0.56	29.06	29.95	6.0	06	6.8	17	07	14	07	31	

88.5	67.5	78.0	☼	66.2	69.8	0.0	13.3	< MONTHLY AVERAGES TOTALS >				0.0	4.89	29.11	29.99	0.5	17	4.1	< MONTHLY AVERAGES			
4.8	3.4	4.1		-----DEPARTURE FROM NORMAL ----->								1.01	SUNSHINE, CLOUD, & VISIBILITY TABLES ON PAGE 3									

DEGREE DAYS				GREATEST 24-HR PRECIPITATION : 3.28 DATE : 30-31				SEA LEVEL PRESSURE											
MONTHLY				GREATEST 24-HR SNOWFALL : 0.0 DATE :				MAXIMUM : 30.16 DATE 17 TIME 0908											
TOTAL DEPARTURE				GREATEST SNOW DEPTH : 0 DATE :				MINIMUM : 29.78 DATE 29 TIME 0530											
SEASON TO DATE				NUMBER OF -> DAYS WITH				MAXIMUM TEMP >= 90 : 14				MINIMUM TEMP <= 32 : 0				PRECIPITATION >= 0.01 INCH: 9			
HEATING : 0 -2 0 -4				THUNDERSTORMS : 8				MAXIMUM TEMP <= 32 : 0				MINIMUM TEMP <= 0 : 0				PRECIPITATION >= 0.10 INCH: 6			
COOLING : 411 117 1101 139								HEAVY FOG : 11				SNOWFALL >= 1.0 INCH : 0							

AUGUST 2006
HUNTINGTON, WV

HOURLY PRECIPITATION

(WATER EQUIVALENT IN INCHES)

HUNTINGTON, WV (KHTS)
AUGUST 2006

WBAN # 03860

Date	FOR HOUR (LST) ENDING AT												Date	FOR HOUR (LST) ENDING AT												Date	Sum of Hourly Data	2400 LST Water Equiv.
	1	2	3	4	5	6	7	8	9	10	11	12		13	14	15	16	17	18	19	20	21	22	23	24			
01													01												01	0.00	0.00	
02													02												02	0.00	0.00	
03													03												03	0.00	0.00	
04	T	T											04												04	T	T	
05													05												05	0.00	0.00	
06													06												06	0.00	0.00	
07													07				0.08	T							07	0.08	0.08	
08										T	T		08												08	T	T	
09													09		T	T			0.17		T				09	0.17	0.17	
10													10					T	T						10	T	T	
11													11			T	T	T	T						11	T	T	
12													12												12	0.00	0.00	
13													13												13	0.00	0.00	
14													14												14	0.00	0.00	
15		0.01	T		T	T							15												15	0.01	0.01	
16													16												16	0.00	0.00	
17													17												17	0.00	0.00	
18													18						T						18	T	T	
19													19		0.05	0.26	T	0.04	0.01				T	T	19	0.36	0.36	
20	T										T		20			T									20	T	T	
21													21												21	0.00	0.00	
22													22												22	0.00	0.00	
23													23												23	0.00	0.00	
24													24												24	0.00	0.00	
25													25												25	0.00	0.00	
26													26												26	0.00	0.00	
27										0.14	0.03	T	T	27				0.09	0.04	T	T	T	T	0.01	27	0.31	0.31	
28	T												28	0.03	T										28	0.03	0.03	
29				0.03									29	0.09	T								T	T	29	0.12	0.12	
30										T			30	2.82	0.05	0.01	T	T							30	3.25	3.25	
31	0.01	T							0.02	T	T		31	T	0.02	0.03	T	0.01	T	0.01	0.02	0.04	0.09	0.20	0.11	31	0.56	0.56

* Indicates sum of Hourly and Daily disagree.

MAXIMUM SHORT DURATION PRECIPITATION (See Note)

Time Period (Minutes)	5	10	15	20	30	45	60	80	100	120	150	180
Precipitation (Inches)	0.76	1.41	1.84	2.13	2.45	2.77	3.00	3.16	3.18	3.19	3.22	3.25
Ending Date	30	30	30	30	30	30	30	30	30	30	30	30
Ending Time (Hr/Min)	1216	1218	1220	1221	1227	1242	1249	1254	1254	1259	1357	1411

Note : The hourly and daily precipitation totals are printed in the last 2 columns and hi-lighted in red when they disagree. NWS does not edit ASOS hourly values but may edit daily and monthly totals. Hourly, daily, and monthly totals are printed as reported by the ASOS site.

Date and time are not entered for TRACE amounts.

REFERENCE NOTES & SUPPLEMENTAL SUMMARIES

* = Extreme for the month (last occurrence if more than one).

T = Trace precipitation amount.

+ = also occurs on earlier date.

FG+ = Heavy fog, visibility .25 miles or less.

BLANK entries denote missing or unreported data.

Resultant wind is the vector sum of the wind speeds and directions divided by the number of observations.

Wind direction is recorded in tens of degrees (2 digits) clockwise from true north. '00' = calm, 'VR' = variable.

Precipitation is for the 24-hour period ending at the time indicated in the column heading.

Water Equivalent of snow on the ground is reported only when the depth is 2 or more inches.

NORMALS ARE FOR THE YEARS 1971-2000

WEATHER NOTATIONS

QUALIFIER	WEATHER PHENOMENA		
DESCRIPTOR	PRECIPITATION	OBSCURATION	OTHER
BC Patches	DZ Drizzle	BR Mist	DS Duststorm
BL Blowing	GR Hail	DU Widespread Dust	FC Funnel Cloud
DR Low Drifting	GS Small Hail and/or Snow Pellets	FG Fog	+FC Tornado Waterspout
FZ Freezing	IC Ice Crystals	FU Smoke	PO Well-Developed Dust/Sand Whirls
MI Shallow	PL Ice Pellets	HZ Haze	
PR Partial	RA Rain	PY Spray	SQ Squalls
SH Shower(s)	SG Snow Grains	SA Sand	SS Sandstorm
TS Thunderstorm	SN Snow	VA Volcanic Ash	GL Glaze
VC In the Vicinity	UP Unkown Precipitation		

Intensity (as indicated on pages 4 to 6):
'+' = Heavy '' = Moderate '-' = Light

HUNTINGTON, WV AUGUST 2006

Ceilometer (30-second) data are used to derive cloudiness at or below 12,000 feet. This cloudiness is the mean cloud cover detected during sunrise to sunset (SR-SS), or midnight to midnight (MN-MN).

Satellite data are used to derive cloudiness above 12,000 feet. Effective Cloud Amount is based on the cloud cover and the transparency of the clouds within the satellite field of view (approx. 31x31 miles).

Sky Condition is based on the sum (not to exceed 8) of the sunrise to sunset cloud cover below and above 12,000 feet. Both ceilometer and satellite data must be present to compute Sky Condition. Clear = 0-2 oktas, Partly Cloudy = 3-6 oktas, Cloudy = 7-8 oktas.

A Heating (Cooling) Degree Day is the difference between the average daily temperature and 65 degrees F. The HDD season begins July 1, the CDD season begins January 1.

Dew Point is the temperature to which the air must be cooled to achieve 100% relative humidity. Wet Bulb is the temperature the air would have if cooled to saturation at constant pressure by evaporation of water into it.

Snow Depth, Snowfall, and Sunshine data may come from nearby sites that the National Weather Service deems Climatologically representative of this site.

ADDITIONAL NOTES:

Date	SUNSHINE		CLOUDINESS (OKTAS)				VISIBILITY (MILES)		RESERVED
	TOTAL MINUTES	PERCENT POSSIBLE	SR-SS		MN-MN		MINIMUM	MAXIMUM	
			Sky Cover	Satellite	Sky Cover	Satellite			
01							0.50	10.00	
02							2.00	10.00	
03							4.00	10.00	
04							4.00	10.00	
05							4.00	10.00	
06							5.00	10.00	
07							4.00	10.00	
08							3.00	10.00	
09							1.25	10.00	
10							1.00	7.00	
11							3.00	10.00	
12							4.00	10.00	
13							1.50	10.00	
14							4.00	8.00	
15							5.00	10.00	
16							0.00	10.00	
17							4.00	10.00	
18							2.00	10.00	
19							0.25	7.00	
20							1.75	10.00	
21							4.00	10.00	
22							0.00	10.00	
23							0.00	10.00	
24							0.50	10.00	
25							0.75	10.00	
26							0.75	9.00	
27							1.50	8.00	
28							0.25	8.00	
29							3.00	10.00	
30							0.25	10.00	
31							1.25	10.00	
MONTHLY AVGS							2.15	9.58	
SUNSHINE (Minutes)									
Total :					Possible :				
Percent Possible :									
NUMBER OF DAYS WITH :									
SKY CONDITION									
Clear		Partly CLDY			Cloudy		Missing		
MINIMUM VISIBILITY (MILES)									
<= .25			<= 3.0			>= 7.0			
6			21			0			

OBSERVATIONS AT 3-HOURLY INTERVALS

HUNTINGTON, WV
AUGUST 2006 KHTS

WBAN # 03860

HOUR (LST)	SKY COVER	CEILING 100's of FT.	SATELLITE		WEATHER	TEMPERATURE °F			WIND SPEED (MPH) DIRECTION Tens of Deg	PRESSURE (INCHES, HG)		HOUR (LST)	SKY COVER	CEILING 100's of FT.	SATELLITE		WEATHER	TEMPERATURE °F			WIND SPEED (MPH) DIRECTION Tens of Deg	PRESSURE (INCHES, HG)							
			Observation Time (LST)	Eff Cld Amt Oktas		VISIBILITY (MILES)	DRY BULB	DEW POINT		WET BULB	RELATIVE HUMIDITY (PCT)				STATION	SEA LEVEL		Observation Time (LST)	Eff Cld Amt Oktas	VISIBILITY (MILES)		DRY BULB	DEW POINT	WET BULB	RELATIVE HUMIDITY (PCT)	STATION	SEA LEVEL		
																												Observation Time (LST)	Eff Cld Amt Oktas
SUNRISE: 0530 AUG 01						SUNSET: 1939						SUNRISE: 0536 AUG 07						SUNSET: 1933											
01	CLR	NC			1.50	BR	76	72	73	87	0	00	29.11	29.98	01	CLR	NC			6.00	HZ	80	70	73	72	3	21	29.22	
04	CLR	NC			1.00	BR	72	69	70	90	3	10	29.12	29.99	04	CLR	NC			4.00	HZ	76	71	73	85	3	21	29.21	30.08
07	CLR	NC			2.00	BR	74	71	72	90	3	19	29.17	30.04	07	CLR	NC			4.00	HZ	78	71	73	79	5	21	29.23	30.10
10	CLR	NC			6.00	HZ	86	75	78	70	5	22	29.18	30.05	10	CLR	NC			7.00		87	73	77	63	6	VR	29.26	30.13
13	FEW	039			8.00		92	73	78	54	5	VR	29.15	30.02	13	SCT	080			9.00		91	71	77	52	6	26	29.24	30.10
16	BKN	055			9.00		94	73	79	51	5	15	29.12	29.99	16	FEW	050			10.00		95	70	77	44	8	25	29.17	30.03
19	BKN	075			10.00		85	69	74	59	5	01	29.13	30.01	19	CLR	NC			10.00		78	68	71	71	6	13	29.20	30.08
22	CLR	NC			7.00		80	73	75	79	0	00	29.14	30.01	22	CLR	NC			9.00		75	69	71	82	0	00	29.23	30.11
SUNRISE: 0531 AUG 02						SUNSET: 1938						SUNRISE: 0536 AUG 08						SUNSET: 1931											
01	CLR	NC			5.00	BR	76	72	73	87	0	00	29.12	29.99	01	CLR	NC			6.00	BR	72	70	71	93	0	00	29.20	30.07
04	CLR	NC			2.50	BR	75	71	72	87	0	00	29.13	30.00	04	BKN	060			5.00	TS BR	74	70	71	87	0	00	29.20	30.07
07	CLR	NC			3.00	BR	76	72	73	87	0	00	29.16	30.03	07	SCT	090			3.00	BR	74	71	72	90	3	19	29.23	30.11
10	CLR	NC			8.00		89	74	78	61	7	26	29.16	30.03	10	BKN	010			4.00	HZ	80	72	74	77	0	00	29.25	30.13
13	BKN	055			10.00		94	72	78	49	8	24	29.12	29.99	13	SCT	029			6.00	HZ	86	71	76	61	3	35	29.23	30.10
16	SCT	070			10.00		96	69	77	42	5	VR	29.08	29.93	16	CLR	NC			5.00	HZ	89	69	75	52	7	01	29.20	30.07
19	CLR	NC			10.00		91	73	78	56	5	20	29.05	29.91	19	BKN	060			6.00	HZ	83	67	72	59	5	03	29.20	30.07
22	CLR	NC			8.00		84	73	76	70	0	00	29.07	29.92	22	CLR	NC			9.00		76	64	68	67	6	04	29.22	30.10
SUNRISE: 0532 AUG 03						SUNSET: 1937						SUNRISE: 0537 AUG 09						SUNSET: 1930											
01	CLR	NC			6.00	HZ	79	73	75	82	0	00	29.07	29.93	01	BKN	060			10.00		74	63	67	69	3	04	29.24	30.11
04	CLR	NC			5.00	HZ	77	72	74	85	3	20	29.05	29.91	04	CLR	NC			10.00		70	63	66	79	0	00	29.22	30.09
07	CLR	NC			4.00	HZ	77	72	74	85	3	21	29.08	29.94	07	CLR	NC			8.00		70	63	66	79	3	10	29.22	30.09
10	CLR	NC			10.00		89	72	77	57	9	24	29.09	29.96	10	CLR	NC			7.00		78	67	71	69	5	VR	29.20	30.08
13	SCT	040			10.00		94	69	76	44	9	25	29.05	29.92	13	FEW	025			5.00	HZ	86	70	75	59	5	VR	29.17	30.05
16	FEW	060			10.00		95	68	76	41	8	25	29.01	29.87	16	BKN	080			5.00	HZ	83	71	75	67	5	14	29.12	29.99
19	CLR	NC			10.00		90	70	76	52	3	20	29.00	29.86	19	BKN	070			1.75	BR	75	71	72	87	3	11	29.08	29.96
22	BKN	065			10.00		83	70	74	65	16	35	29.05	29.92	22	BKN	044			2.00	BR	74	71	72	90	0	00	29.08	29.96
SUNRISE: 0533 AUG 04						SUNSET: 1936						SUNRISE: 0538 AUG 10						SUNSET: 1929											
01	SCT	070			10.00		76	69	71	79	0	00	29.05	29.91	01	FEW	065			2.50	BR	73	70	71	90	3	23	29.08	29.94
04	CLR	NC			6.00	BR	74	70	71	87	3	VR	29.05	29.92	04	FEW	065			4.00	BR	73	70	71	90	5	24	29.08	29.94
07	OVC	005			4.00	BR	75	71	72	87	6	28	29.10	29.97	07	BKN	038			2.00	BR	74	71	72	90	5	21	29.08	29.94
10	OVC	019			9.00		78	71	73	79	6	02	29.15	30.02	10	OVC	027			4.00	HZ	79	72	74	79	6	29	29.08	29.95
13	BKN	036			10.00		84	69	74	61	10	36	29.15	30.02	13	BKN	055			7.00		85	69	74	59	0	00	29.05	29.91
16	FEW	041			10.00		88	66	73	48	7	02	29.12	29.99	16	CLR	NC			6.00	HZ	85	71	75	63	7	03	28.98	29.84
19	CLR	NC			10.00		81	64	70	56	6	01	29.15	30.02	19	CLR	NC			2.50	HZ	78	73	75	85	0	00	28.93	29.80
22	CLR	NC			10.00		76	63	68	64	5	05	29.19	30.06	22	BKN	085			5.00	HZ	76	71	73	85	0	00	28.98	29.85
SUNRISE: 0534 AUG 05						SUNSET: 1935						SUNRISE: 0539 AUG 11						SUNSET: 1928											
01	CLR	NC			4.00	BR	68	64	65	87	0	00	29.17	30.04	01	OVC	033			5.00	BR	74	70	71	87	5	24	29.00	29.86
04	CLR	NC			5.00	BR	67	63	65	87	5	36	29.18	30.05	04	CLR	NC			4.00	HZ	74	69	71	84	5	02	28.97	29.83
07	CLR	NC			8.00		69	63	65	81	5	09	29.21	30.08	07	BKN	070			3.00	HZ	73	67	69	82	5	03	29.01	29.87
10	CLR	NC			10.00		81	63	69	54	9	08	29.20	30.08	10	BKN	036			8.00		76	65	69	69	7	03	29.04	29.90
13	CLR	NC			10.00		87	63	71	45	9	08	29.18	30.06	13	CLR	NC			10.00		81	64	70	56	7	36	29.03	29.90
16	CLR	NC			10.00		89	64	72	44	9	09	29.16	30.03	16	FEW	037			7.00	-RA	76	65	69	69	5	35	29.03	29.89
19	FEW	085			10.00		84	61	69	46	7	05	29.15	30.02	19	OVC	095			6.00	HZ	75	66	69	74	0	00	29.04	29.91
22	BKN	085			10.00		79	59	67	50	6	08	29.18	30.05	22	OVC	075			7.00		74	65	68	74	5	03	29.05	29.93
SUNRISE: 0535 AUG 06						SUNSET: 1934						SUNRISE: 0540 AUG 12						SUNSET: 1927											
01	CLR	NC			10.00		74	61	66	64	5	09	29.16	30.03	01	OVC	100			7.00		72	65	68	79	5	05	29.05	29.92
04	CLR	NC			10.00		71	63	66	76	5	12	29.17	30.03	04	OVC	080			6.00	HZ	71	65	67	81	6	04	29.05	29.93
07	CLR	NC			7.00		72	66	68	82	5	11	29.20	30.07	07	OVC	060			10.00		68	60	63	76	7	04	29.10	29.97
10							86	70	75	59			29.21	30.08	10	OVC	037			9.00		72	62	66	71	6	06	29.13	30.00
13															13	OVC	025			10.00		75	63	67	66	7	07	29.13	30.01
16	FEW	049			8.00		95	71	78	46	9	20	29.15	30.02	16	BKN	060			10.00		77	63	68	62	7	12	29.12	29.99
19	FEW	060			7.00		90	71	77	54	6	20	29.16	30.03	19	OVC	065			10.00		74	61	66	64	5	09	29.13	30.01
22	CLR	NC			7.00		83	72	75	70	5	17	29.18	30.05	22	CLR	NC			7.00		68	63	65	84	5	11	29.13	30.01

OBSERVATIONS AT 3-HOURLY INTERVALS

HUNTINGTON, WV
AUGUST 2006 KHTS

WBAN # 03860

HOUR (LST)	SKY COVER	CEILING 100's of FT.	SATELLITE		WEATHER	TEMPERATURE °F			WIND SPEED (MPH) DIRECTION Tens of Deg	PRESSURE (INCHES, HG)		HOUR (LST)	SKY COVER	CEILING 100's of FT.	SATELLITE		WEATHER	TEMPERATURE °F			WIND SPEED (MPH) DIRECTION Tens of Deg	PRESSURE (INCHES, HG)							
			Observation Time (LST)	Eff Cld Amt Oktas		VISIBILITY (MILES)	DRY BULB	DEW POINT		WET BULB	RELATIVE HUMIDITY (PCT)				STATION	SEA LEVEL		Observation Time (LST)	Eff Cld Amt Oktas	VISIBILITY (MILES)		DRY BULB	DEW POINT	WET BULB	RELATIVE HUMIDITY (PCT)	STATION	SEA LEVEL		
																												STATION	SEA LEVEL
SUNRISE: 0541 AUG 13						SUNSET: 1926						SUNRISE: 0546 AUG 19						SUNSET: 1918											
01	CLR	NC			2.00	BR	65	62	63	90	0	00	29.16	30.03	01	VV	001			0.75	BR	71	68	69	90	3	12	29.13	30.01
04	CLR	NC			3.00	BR	63	60	61	90	0	00	29.17	30.05	04	VV	001			0.25	FG	71	69	70	93	3	15	29.11	29.98
07	OVC	065			2.00	BR	64	61	62	90	3	08	29.19	30.07	07	OVC	001			0.75	BR	72	69	70	90	3	16	29.13	30.01
10	CLR	NC			10.00		75	62	67	64	0	00	29.20	30.08	10	CLR	NC			6.00	HZ	80	71	74	74	6	VR	29.13	30.00
13	CLR	NC			10.00		83	61	69	48	7	24	29.18	30.06	13	FEW	030			6.00	HZ	90	72	77	56	8	21	29.08	29.94
16	FEW	042			10.00		86	64	71	48	6	VR	29.13	30.01	16	BKN	100			7.00	TS	73	69	70	87	6	18	29.08	29.95
19	CLR	NC			10.00		82	67	72	61	3	15	29.11	29.98	19	FEW	006			4.00	BR	74	70	71	87	8	19	29.05	29.93
22	CLR	NC			5.00	HZ	73	68	70	84	3	09	29.12	30.00	22	CLR	NC			5.00	BR	73	69	70	87	6	19	29.07	29.93
SUNRISE: 0542 AUG 14						SUNSET: 1924						SUNRISE: 0547 AUG 20						SUNSET: 1916											
01	FEW	095			7.00		73	68	70	84	5	18	29.13	30.00	01	OVC	080			4.00	-RA BR	72	69	70	90	3	20	29.07	29.93
04	FEW	039			6.00	BR	72	68	69	87	0	00	29.12	29.99	04	OVC	080			4.00	BR	72	68	69	87	0	00	29.05	29.92
07	CLR	NC			4.00	HZ	72	67	69	84	5	20	29.14	30.01	07	OVC	007			4.00	BR	72	69	70	90	3	19	29.08	29.94
10	OVC	023			8.00		78	69	72	74	9	22	29.14	30.01	10	OVC	003			1.75	BR	74	71	72	90	5	21	29.10	29.97
13	SCT	039			6.00	HZ	86	69	74	57	12	20	29.09	29.96	13	BKN	037			4.00	HZ	81	70	74	69	6	34	29.09	29.97
16	FEW	047			8.00		89	66	73	47	7	VR	29.05	29.91	16	BKN	055			7.00	-RA	79	71	74	77	3	19	29.09	29.97
19	BKN	075			7.00		84	68	73	59	5	20	29.00	29.86	19	CLR	NC			10.00		78	60	67	54	7	33	29.11	29.99
22	BKN	065			8.00		80	68	72	67	5	20	29.01	29.87	22	SCT	043			10.00		72	58	64	62	3	35	29.17	30.05
SUNRISE: 0543 AUG 15						SUNSET: 1923						SUNRISE: 0548 AUG 21						SUNSET: 1915											
01	OVC	036			7.00		79	68	72	69	6	22	29.04	29.90	01	CLR	NC			10.00		66	59	62	78	0	00	29.19	30.07
04	OVC	019			5.00	BR	75	71	72	87	5	30	29.05	29.91	04	SCT	040			10.00		64	59	61	84	3	02	29.22	30.09
07	OVC	048			10.00		71	64	67	79	6	31	29.09	29.97	07	CLR	NC			7.00		64	59	61	84	3	03	29.25	30.13
10	OVC	080			10.00		75	63	67	66	7	35	29.13	30.00	10	CLR	NC			10.00		74	59	65	60	5	03	29.27	30.15
13	CLR	NC			10.00		82	59	67	46	5	VR	29.13	30.00	13	CLR	NC			10.00		80	57	66	45	0	00	29.24	30.12
16	CLR	NC			10.00		86	55	67	35	7	31	29.09	29.96	16	CLR	NC			10.00		81	56	66	42	0	00	29.20	30.07
19	CLR	NC			10.00		80	54	64	41	6	35	29.13	30.00	19	CLR	NC			10.00		78	61	67	56	3	18	29.18	30.06
22	CLR	NC			10.00		70	58	63	66	0	00	29.19	30.06	22	CLR	NC			8.00		68	63	65	84	3	09	29.22	30.10
SUNRISE: 0544 AUG 16						SUNSET: 1922						SUNRISE: 0549 AUG 22						SUNSET: 1914											
01	CLR	NC			10.00		63	59	61	87	0	00	29.19	30.07	01	CLR	NC			4.00	BR	65	62	63	90	0	00	29.22	30.10
04	CLR	NC			7.00		60	57	58	90	0	00	29.20	30.08	04	CLR	NC			1.50	BR	63	60	61	90	0	00	29.22	30.10
07	BKN	005			0.25	FG	61	59	60	93	0	00	29.24	30.12	07	VV	001			0.00	FG	62	60	61	93	0	00	29.24	30.12
10	CLR	NC			10.00		79	60	67	52	6	01	29.27	30.14	10	CLR	NC			9.00		76	62	67	62	3	VR	29.26	30.14
13	CLR	NC			10.00		87	53	66	31	8	12	29.24	30.12	13	CLR	NC			10.00		84	57	67	40	5	VR	29.23	30.11
16	CLR	NC			10.00		89	53	67	29	5	06	29.21	30.09	16	CLR	NC			10.00		85	53	66	33	3	05	29.19	30.06
19	CLR	NC			10.00		83	55	66	38	7	05	29.21	30.09	19	CLR	NC			10.00		79	58	66	49	3	23	29.17	30.06
22	CLR	NC			10.00		73	57	63	57	5	05	29.23	30.11	22	CLR	NC			7.00		67	61	63	81	0	00	29.20	30.07
SUNRISE: 0544 AUG 17						SUNSET: 1920						SUNRISE: 0550 AUG 23						SUNSET: 1912											
01	CLR	NC			10.00		66	59	62	78	0	00	29.23	30.11	01	CLR	NC			2.50	BR	63	59	61	87	0	00	29.19	30.06
04	CLR	NC			8.00		65	60	62	84	0	00	29.24	30.12	04	CLR	NC			3.00	BR	63	59	61	87	0	00	29.17	30.05
07	CLR	NC			8.00		65	59	61	81	0	00	29.27	30.15	07	VV	001			0.00	FG	60	57	58	90	0	00	29.19	30.06
10	CLR	NC			10.00		82	62	69	51	5	13	29.28	30.15	10	CLR	NC			10.00		76	60	66	58	0	00	29.21	30.08
13	CLR	NC			10.00		90	59	70	35	7	VR	29.23	30.10	13	CLR	NC			10.00		85	57	67	39	7	35	29.17	30.04
16	CLR	NC			10.00		91	54	68	29	5	VR	29.20	30.07	16	CLR	NC			10.00		88	53	66	30	3	VR	29.11	29.98
19	CLR	NC			10.00		85	59	68	41	5	13	29.19	30.06	19	CLR	NC			10.00		80	60	67	51	0	00	29.08	29.96
22	CLR	NC			10.00		72	62	66	71	5	09	29.22	30.09	22	CLR	NC			10.00		71	61	65	71	0	00	29.11	29.99
SUNRISE: 0545 AUG 18						SUNSET: 1919						SUNRISE: 0551 AUG 24						SUNSET: 1911											
01	CLR	NC			7.00		67	62	64	84	0	00	29.21	30.08	01	CLR	NC			5.00	BR	65	61	63	87	0	00	29.11	29.98
04	CLR	NC			7.00		66	61	63	84	6	10	29.21	30.08	04	CLR	NC			4.00	BR	63	59	61	87	0	00	29.09	29.97
07	FEW	055			5.00	HZ	67	61	63	81	5	11	29.24	30.11	07	CLR	NC			1.75	BR	63	59	61	87	0	00	29.12	30.00
10	CLR	NC			10.00		81	63	69	54	6	VR	29.23	30.10	10	CLR	NC			10.00		79	63	69	58	0	00	29.15	30.02
13	OVC	075			9.00		82	66	71	58	3	13	29.20	30.08	13	CLR	NC			10.00		87	59	69	39	5	26	29.10	29.98
16	CLR	NC			9.00		87	67	73	52	3	VR	29.16	30.03	16	CLR	NC			10.00		89	59	70	36	3	VR	29.05	29.93
19	CLR	NC			9.00		77	68	71	74	3	19	29.17	30.05	19	CLR	NC			10.00		82	63	70	53	6	19	29.07	29.94
22	CLR	NC			2.00	BR	73	69	70	87	3	22	29.16	30.04	22	CLR	NC			9.00		72	64	67	76	0	00	29.08	29.95

OBSERVATIONS AT 3-HOURLY INTERVALS

HUNTINGTON, WV
AUGUST 2006 KHTS

WBAN # 03860

HOUR (LST)	SKY COVER	CEILING 100's of FT.	SATELLITE		WEATHER	TEMPERATURE °F			WIND SPEED (MPH) DIRECTION Tens of Deg	PRESSURE (INCHES, HG)				
			Observation Time (LST)	Eff Cl'd Amt Oktas		VISIBILITY (MILES)	DRY BULB	DEW POINT		WET BULB	RELATIVE HUMIDITY (PCT)	STATION	SEA LEVEL	
SUNRISE: 0552 AUG 25 SUNSET: 1910														
01	CLR	NC			2.50	BR	67	64	65	90	0	00	29.09	29.96
04	CLR	NC			1.75	BR	66	63	64	90	3	19	29.08	29.95
07	CLR	NC			0.75	BR	63	61	62	93	0	00	29.10	29.97
10	CLR	NC			8.00		79	64	69	60	5	VR	29.11	29.99
13	CLR	NC			9.00		91	65	73	42	9	24	29.08	29.94
16	CLR	NC			9.00		92	63	73	38	8	26	29.07	29.93
19	CLR	NC			6.00	HZ	84	68	73	59	5	15	29.05	29.93
22	CLR	NC			5.00	HZ	78	70	73	77	0	00	29.09	29.96
SUNRISE: 0552 AUG 26 SUNSET: 1908														
01	CLR	NC			2.50	BR	73	69	70	87	3	09	29.09	29.96
04	BKN	075			1.50	BR	73	69	70	87	0	00	29.11	29.97
07	VV	001			0.75	BR	71	68	69	90	0	00	29.13	30.01
10	FEW	055			7.00		85	69	74	59	6	VR	29.18	30.04
13	CLR	NC			8.00		93	68	76	44	7	VR	29.15	30.01
16	CLR	NC			8.00		89	67	74	48	7	22	29.10	29.97
19	CLR	NC			7.00		85	70	75	61	3	14	29.09	29.97
22	CLR	NC			5.00	HZ	78	71	73	79	3	08	29.11	29.97
SUNRISE: 0553 AUG 27 SUNSET: 1907														
01	CLR	NC			4.00	BR	74	71	72	90	3	10	29.10	29.97
04	CLR	NC			4.00	HZ	74	69	71	84	5	19	29.11	29.98
07	BKN	110			4.00	HZ	75	67	70	76	8	20	29.14	30.01
10	SCT	100			6.00	HZ	77	67	70	71	8	19	29.14	30.01
13	CLR	NC			8.00		86	70	75	59	13	24	29.11	29.98
16	FEW	033			8.00	TS	88	71	76	57	7	19	29.05	29.92
19	BKN	090			2.00	-TSRA BR	78	74	75	88	5	36	29.05	29.92
22	CLR	NC			2.50	BR	76	72	73	87	0	00	29.09	29.96
SUNRISE: 0554 AUG 28 SUNSET: 1905														
01	VV	003			0.50	TS FG	74	72	73	94	0	00	29.09	29.96
04	FEW	080			1.25	BR	72	69	70	90	0	00	29.08	29.94
07	CLR	NC			0.25	FG	72	70	71	93	3	09	29.07	29.93
10	BKN	075			5.00	HZ	80	72	74	77	6	21	29.07	29.93
13	SCT	026			7.00		85	71	75	63	0	00	29.04	29.90
16	BKN	043			7.00		83	73	76	72	13	18	29.00	29.86
19	CLR	NC			7.00		78	71	73	79	7	18	28.94	29.81
22	FEW	080			5.00	BR	75	71	72	87	5	19	28.95	29.82
SUNRISE: 0555 AUG 29 SUNSET: 1904														
01	FEW	080			4.00	BR	75	71	72	87	6	21	28.94	29.80
04	BKN	050			5.00	BR	75	71	72	87	5	20	28.93	29.79
07	BKN	021			6.00	BR	75	71	72	87	7	21	28.95	29.81
10	BKN	019			8.00		78	71	73	79	7	25	28.98	29.85
13	SCT	046			10.00		87	71	76	59	6	VR	28.95	29.81
16	SCT	065			7.00		85	73	77	67	8	20	28.93	29.79
19	CLR	NC			8.00		79	73	75	82	5	18	28.95	29.81
22	SCT	040			5.00	BR	75	72	73	90	0	00	28.98	29.84
SUNRISE: 0556 AUG 30 SUNSET: 1902														
01	FEW	070			4.00	BR	73	70	71	90	0	00	28.99	29.85
04	OVC	005			0.25	FG	73	70	71	90	0	00	28.98	29.84
07	OVC	008			0.75	BR	73	71	72	93	0	00	29.01	29.87
10	OVC	011			5.00	HZ	76	71	73	85	6	05	29.02	29.88
13	OVC	035			1.00	TS+RA BR	69	65	66	87	6	VR	29.01	29.88
16	OVC	015			5.00	-RA BR	73	69	70	87	5	36	29.01	29.88
19	BKN	014			2.50	HZ	73	68	70	84	3	36	29.00	29.87
22	OVC	036			1.50	BR	71	68	69	90	0	00	29.03	29.90

HOUR (LST)	SKY COVER	CEILING 100's of FT.	SATELLITE		WEATHER	TEMPERATURE °F			WIND SPEED (MPH) DIRECTION Tens of Deg	PRESSURE (INCHES, HG)				
			Observation Time (LST)	Eff Cl'd Amt Oktas		VISIBILITY (MILES)	DRY BULB	DEW POINT		WET BULB	RELATIVE HUMIDITY (PCT)	STATION	SEA LEVEL	
SUNRISE: 0557 AUG 31 SUNSET: 1859														
01	OVC	045			4.00	-RA BR	71	67	68	87	5	03	29.02	29.89
04	OVC	006			2.50	BR	70	67	68	90	5	01	29.02	29.88
07	OVC	002			1.25	BR	71	67	68	87	5	02	29.05	29.92
10	BKN	029			5.00	-RA BR	73	69	70	87	9	08	29.08	29.95
13	OVC	041			10.00		73	67	69	82	9	07	29.10	29.97
16	OVC	007			10.00	-RA	70	66	67	87	10	07	29.09	29.97
19	OVC	009			10.00		70	66	67	87	8	06	29.10	29.98
22	OVC	007			6.00	RA BR	69	65	66	87	7	07	29.11	29.99

3-HOURLY OBSERVATION NOTES

Sky Cover is the amount of the sky obscured. CLR or SKC = 0, FEW = 1/8-2/8, SCT = 3/8-4/8, BKN = 5/8-7/8, OVC = 8/8, W = Vertical Visibility = 8/8

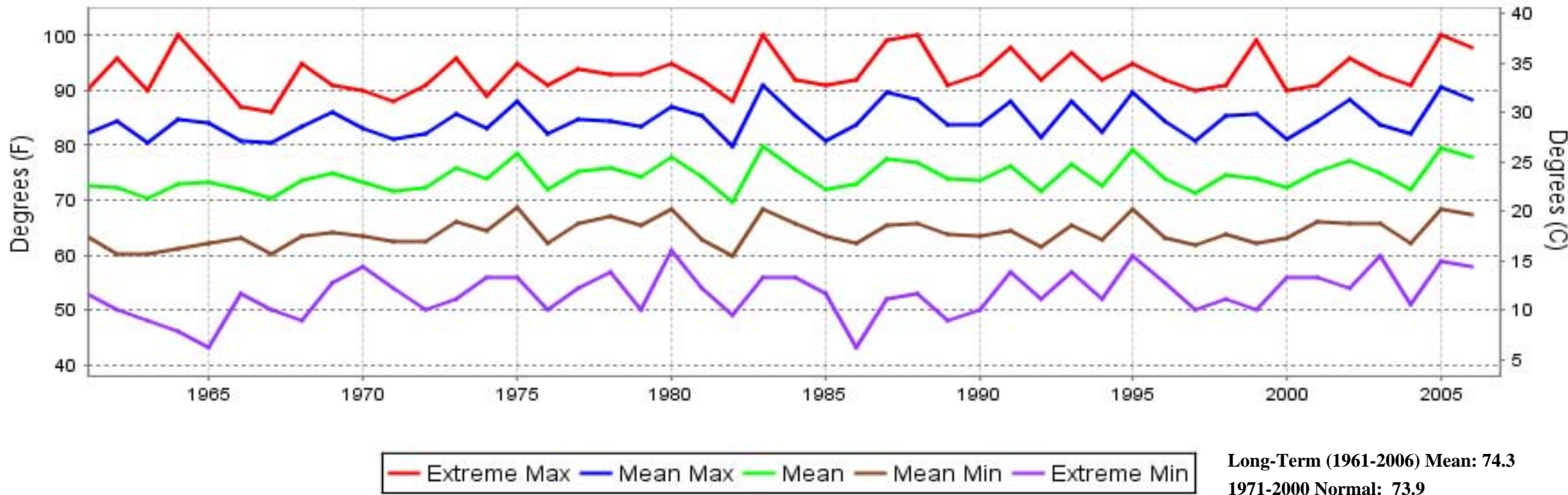
Ceiling is reported in hundreds of feet above ground level for clouds at or below 12,000 feet. NC = No Ceiling detected.

& = Original observation contained additional weather elements. See page 3 for additional notes.

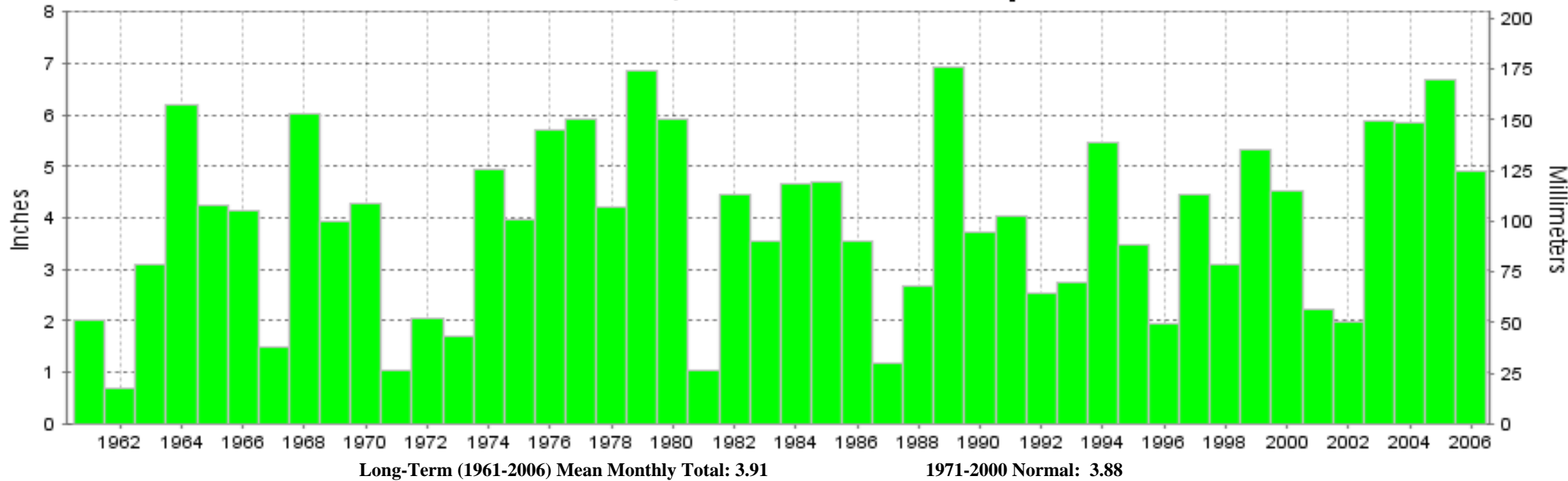
SUMMARY BY HOUR

HOUR (LST)	AVERAGES								RESULTANT WIND (MPH)			
	CEILOMETER	EFF CLD AMT	DRY BULB	DEW POINT	WET BULB	RELATIVE HUMIDITY	PRESSURE (Inches, HG)		VISIBILITY (Miles)	WIND SPEED (MPH)	SPEED	DIRECTION
							STATION	SEA LEVEL				
01			71	66	68	84	29.12	29.98	5.28	2	1	16
02			71	66	68	85	29.11	29.98	5.35	2	1	17
03			71	66	68	86	29.11	29.98	4.85	3	1	15
04			70	66	67	87	29.12	29.98	4.44	2	1	16
05			70	65	67	87	29.12	29.99	4.60	3	1	22
06			69	65	66	87	29.13	30.00	3.77	3	1	19
07			70	66	67	86	29.14	30.01	3.69	3	1	16
08			73	67	69	82	29.15	30.02	5.10	4	1	17
09			76	67	70	75	29.15	30.03	6.35	4	1	18
10			79	67	71	67	29.16	30.03	7.69	6	1	19
11			82	67	72	62	29.16	30.03	8.27	6	1	22
12			84	66	72	57	29.15	30.02	8.13	6	1	18
13			85	66	72	54	29.13	30.00	8.43	6	2	24
14			86	66	72	54	29.12	29.99	8.13	6	2	24
15			86	65	72	53	29.11	29.98	8.55	7	1	19
16			86	65	72	53	29.10	29.97	8.55	6	1	17
17			84	66	72	56	29.10	29.97	8.02	6	1	22
18			83	66	72	60	29.09	29.96	7.97	5	1	20
19			80	66	71	63	29.09	29.97	7.93	5	1	12
20			78	66	70	69	29.10	29.97	8.03	4	1	13
21			76	67	70	74	29.11	29.99	7.44	2	2	12
22			75	66	69	76	29.12	29.99	6.94	3	2	12
23			73	67	69	80	29.12	29.99	6.27	3	1	15
24			72	66	68	82	29.12	29.99	5.65	3	1	16

HUNTINGTON, WV AUGUST Temperatures



HUNTINGTON, WV AUGUST Precipitation





**AUGUST 2006
HUNTINGTON, WV**

**LOCAL CLIMATOLOGICAL DATA
NOAA, National Climatic Data Center**

I certify that this is an official publication of the National Oceanic and Atmospheric Administration (NOAA). It is compiled using information from weather observing sites operated by NOAA-National Weather Service / Department Of Transportation-Federal Aviation Administration and received at the National Climatic Data Center (NCDC), Asheville, North Carolina 28801.

Thomas R. Karl
DIRECTOR

NCDC now offers an annual online subscription for the **Edited Local Climatological Data Publication**. When you purchase this subscription service, you will have **immediate online access** to all previous publications back to July 1996 and all publications thereafter until the expiration of the subscription. Your subscription is valid for one year after purchase. **The total cost for online delivery (including back issues) is significantly less than the cost for offline delivery.** To order this and other subscriptions online with your credit card, go to: **www.ncdc.noaa.gov** and choose subscriptions.

We welcome your questions or comments, please contact us at:

Toll Free Number (866) 742-3322 (voice)

Fax Number : (304) 726-4409

TDD : (828) 271-4010

or Email : ncdc.info@noaa.gov

Local Climatological Data is available at www.ncdc.noaa.gov

United States
Department of Commerce

National Oceanic and
Atmospheric Administration

National Environmental Satellite
Atmospheric Administration

For address correction, please return a photocopy of this page to Subscription Services indicating changes

NCDC Subscription Services Center
310 State Route 956 Building 300
Rocket Center, WV 26726

OFFICIAL BUSINESS, PENALTY FOR PRIVATE USE \$300

FIRST CLASS
POSTAGE AND FEES PAID
NOAA
PERMIT G-19