



# JULY 2008

## LOCAL CLIMATOLOGICAL DATA

### NOAA, National Climatic Data Center

**HUNTINGTON, WV**  
**TRI-STATE/M.J.FERGUSON FIELD AIRPORT (KHTS)**  
 Lat:38 ° 22'N Long: 82 ° 33'W Elev (Ground) 824 Feet  
 Time Zone : EASTERN WBAN: 03860 ISSN#: 0198-5655



Date 1	Temperature °F						Deg Days BASE 65°		WEATHER 10	SNOW/ICE ON GND(IN)		PRECIPITATION ON GND(IN)		PRESSURE (INCHES OF HG)		WIND SPEED = MPH DIR = TENS OF DEGREES								Date 24
	MAXIMUM 2	MINIMUM 3	AVERAGE 4	DEP FROM NORMAL 5	AVERAGE DEW PT 6	AVERAGE WET BULB 7	HEATING 8	COOLING 9		0700 LST	1300 LST	2400 LST	2400 LST	AVERAGE STATION 15	AVERAGE SEA LEVEL 16	RESULTANT SPEED 17	RES DIR 18	AVERAGE SPEED 19	MAXIMUM					
																			3-SEC		2-MIN			
																			SPEED 20	DIR 21	SPEED 22	DIR 23		
01	78	54	66*	-8	53	59	0	1				0.00	29.14	30.03	0.9	24	2.1			10	01	01		
02	84	51*	68	-6	55	61	0	3				0.00	29.15	30.03	4.4	22	5.1	20	22	13	21	02		
03	84	66	75	1	61	66	0	10	RA BR			0.07	29.11	30.00	6.0	22	7.0	24	26	17	26	03		
04	74	67	71	-3	67	68	0	6	RA FG+ FG BR HZ			0.40	29.13	30.00	0.8	07	2.1	10	08	8	08	04		
05	81	67	74	-1	67	69	0	9	RA FG+ BR HZ			0.04	29.09	29.97	1.0	06	1.4	12	02	8	01	05		
06	84	64	74	-1	66	68	0	9	FG+ FG BR HZ			0.00	29.11	29.99	0.8	20	2.1	12	25	9	25	06		
07	86	64	75	0	65	69	0	10	FG+ BR HZ			0.00	29.14	30.01	2.1	23	2.9	17	24	12	24	07		
08	87	68	78	3	68	71	0	13	TS RA BR HZ			0.06	29.10	29.97	5.4	21	5.8	26	21	18	22	08		
09	82	70	76	1	69	71	0	11	TS TSRA RA BR			0.14	29.06	29.94	5.6	24	6.2	31	34	21	35	09		
10	82	63	73	-2	60	65	0	8	BR			0.00	29.19	30.07	1.9	01	2.8	13	35	9	06	10		
11	86	57	72	-3	61	66	0	7	BR			0.00	29.20	30.08	1.3	20	1.9	12	22	9	23	11		
12	89	63	76	1	67	70	0	11	TS TSRA RA BR HZ			0.19	29.15	30.01	2.4	21	3.1	20	32	14	31	12		
13	78	63	71	-4	67	69	0	6	RA BR			0.17	28.99	29.85	3.8	23	4.4	14	35	10	34	13		
14	82	59	71	-4	58	63	0	6	FG+ FG BR			0.00	29.05	29.94	0.6	33	2.2	17	27	12	27	14		
15	84	58	71	-4	57	63	0	6	BR			0.00	29.20	30.10	1.4	07	1.6	16	03	12	09	15		
16	87	57	72	-3	59	64	0	7	BR			0.00	29.29	30.18	1.0	05	2.0	14	10	10	09	16		
17	91	59	75	0	62	67	0	10	FG BR HZ			0.00	29.26	30.14	0.6	12	2.2	23	21	8	05	17		
18	91	64	78	2	60	67	0	13	FG BR HZ			0.00	29.18	30.04	1.7	21	2.4	26	32	14	20	18		
19	92	63	78	2	64	69	0	13	BR HZ			0.00	29.13	30.01	2.9	23	3.4	17	22	12	23	19		
20	93*	68	81*	5	67	71	0	16	TS TSRA RA BR HZ SQ			0.11	29.11	29.97	4.3	25	6.4	51*	34	36*	32	20		
21	92	68	80	4	68	72	0	15	HZ			0.00	29.07	29.93	1.8	23	3.0	22	02	12	35	21		
22	91	69	80	4	65	69	0	15	TS TSRA RA			0.01	29.07	29.94	3.4	22	6.1	30	31	20	34	22		
23	83	62	73	-3	61	65	0	8	RA BR HZ			0.03	29.08	29.96	2.9	32	4.8	24	32	17	34	23		
24	83	57	70	-6	55	61	0	5	BR			0.00	29.17	30.06	0.6	16	1.6	10	27	8	17	24		
25	88	58	73	-3	59	65	0	8	BR			0.00	29.19	30.06	2.2	21	3.0	15	20	12	21	25		
26	89	67	78	2	66	70	0	13	RA			0.03	29.08	29.94	2.0	23	3.2	26	03	10	28	26		
27	87	63	75	-1	60	66	0	10	RA HZ			T	29.02	29.89	3.0	34	4.1			13	34	27		
28	80	58	69	-7	63	66	0	4	RA BR			T	29.03	29.90	0.9	12	1.2			9	16	28		
29	90	63	77	1	65	69	0	12	BR HZ			0.00	29.04	29.91	0.4	12	1.2	10	14	7	36	29		
30	91	68	80	4	67	71	0	15	BR HZ			0.00	28.97	29.82	3.8	25	4.3	22	29	14	31	30		
31	81	70	76	0	70	71	0	11	TS TSRA RA FG+ BR			0.58	28.91	29.78	2.3	22	3.0	15	25	10	22	31		
85.5		62.8	74.2	Σ	63.0	67.1	0.0	9.4	< MONTHLY AVERAGES   TOTALS >				1.83	29.10	29.99	1.6	23	3.3	< MONTHLY AVERAGES					
0.4		-2.6	-1.1		<----- DEPARTURE FROM NORMAL ----->				-2.63	SUNSHINE, CLOUD, & VISIBILITY TABLES ON PAGE 3														
<b>DEGREE DAYS</b>									GREATEST 24-HR PRECIPITATION : 0.58 DATE : 31				SEA LEVEL PRESSURE				DATE TIME							
MONTHLY									GREATEST 24-HR SNOWFALL :				MAXIMUM :				30.22 16 1131							
TOTAL DEPARTURE									GREATEST SNOW DEPTH :				MINIMUM :				29.73 31 1851							
SEASON TO DATE									NUMBER OF -> DAYS WITH				MAXIMUM TEMP >= 90 : 8				MINIMUM TEMP <= 32 : 0				PRECIPITATION >= 0.01 INCH: 12			
TOTAL DEPARTURE									THUNDERSTORMS : 6				MAXIMUM TEMP <= 32 : 0				MINIMUM TEMP <= 0 : 0				PRECIPITATION >= 0.10 INCH: 6			
HEATING : 0 -2 0 -2									HEAVY FOG : 7				SNOWFALL >= 1.0 INCH :											
COOLING : 291 -46 578 -90																								

**JULY 2008**  
**HUNTINGTON, WV**

# HOURLY PRECIPITATION

(WATER EQUIVALENT IN INCHES)

HUNTINGTON, WV (KHTS)  
JULY 2008

WBAN # 03860

Date	FOR HOUR (LST) ENDING AT												Date	FOR HOUR (LST) ENDING AT												Date	Sum of Hourly Data	2400 LST Water Equiv.
	1	2	3	4	5	6	7	8	9	10	11	12		13	14	15	16	17	18	19	20	21	22	23	24			
01													01												01	0.00	0.00	
02													02												02	0.00	0.00	
03													03			0.02	T		0.02	0.02				0.01	03	0.07	0.07	
04	0.01	T	0.01			T	T	T	0.02	0.02	0.01	0.01	04		0.02	0.02					0.01	0.01	0.02	0.13	0.11	04	0.40	0.40
05	0.04												05												05	0.04	0.04	
06													06												06	0.00	0.00	
07													07												07	0.00	0.00	
08			0.02	0.01									08		0.03	T	T						T	T	08	0.06	0.06	
09	T	0.01							T				09			T	0.11	0.02	T						09	0.14	0.14	
10													10												10	0.00	0.00	
11													11												11	0.00	0.00	
12													12			0.17	0.02								12	0.19	0.19	
13							T		T	0.02		T	13	0.14	0.01	T									13	0.17	0.17	
14													14												14	0.00	0.00	
15													15												15	0.00	0.00	
16													16												16	0.00	0.00	
17													17												17	0.00	0.00	
18													18												18	0.00	0.00	
19													19												19	0.00	0.00	
20													20				0.01	T	T	0.08	0.02				20	0.11	0.11	
21													21												21	0.00	0.00	
22					0.01	T							22												22	0.01	0.01	
23							T	0.03					23												23	0.03	0.03	
24													24												24	0.00	0.00	
25													25												25	0.00	0.00	
26													26										0.03		26	0.03	0.03	
27		T											27												27	T	T	
28													28			T	T								28	T	T	
29													29												29	0.00	0.00	
30													30												30	0.00	0.00	
31			T	0.07	0.12	0.15	0.13	0.06	0.04	T			31		T						0.01	T			31	0.58	0.58	

\* Indicates sum of Hourly and Daily disagree.

### MAXIMUM SHORT DURATION PRECIPITATION (See Note)

Time Period (Minutes)	5	10	15	20	30	45	60	80	100	120	150	180
Precipitation (Inches)	0.13	0.16	0.17	0.17	0.18	0.19	0.22	0.25	0.28	0.30	0.40	0.45
Ending Date	12	12	12	12	12	12	31	31	31	31	31	31
Ending Time (Hr/Min)	1451	1451	1457	1457	1507	1523	0616	0638	0655	0720	0616	0647

Note : The hourly and daily precipitation totals are printed in the last 2 columns and hi-lighted in red when they disagree. NWS does not edit ASOS hourly values but may edit daily and monthly totals. Hourly, daily, and monthly totals are printed as reported by the ASOS site.

Date and time are not entered for TRACE amounts.

# REFERENCE NOTES & SUPPLEMENTAL SUMMARIES

\* = Extreme for the month (last occurrence if more than one).

T = Trace precipitation amount.

+ = also occurs on earlier date.

FG+ = Heavy fog, visibility .25 miles or less.

BLANK entries denote missing or unreported data.

Resultant wind is the vector sum of the wind speeds and directions divided by the number of observations.

Wind direction is recorded in tens of degrees (2 digits) clockwise from true north. '00' = calm, 'VR' = variable.

Precipitation is for the 24-hour period ending at the time indicated in the column heading.

Water Equivalent of snow on the ground is reported only when the depth is 2 or more inches.

NORMALS ARE FOR THE YEARS 1971-2000

## WEATHER NOTATIONS

QUALIFIER	WEATHER PHENOMENA		
DESCRIPTOR	PRECIPITATION	OBSCURATION	OTHER
BC Patches	DZ Drizzle	BR Mist	DS Duststorm
BL Blowing	GR Hail	DU Widespread Dust	FC Funnel Cloud
DR Low Drifting	GS Small Hail and/or Snow Pellets	FG Fog	+FC Tornado Waterspout
FZ Freezing	IC Ice Crystals	FU Smoke	PO Well-Developed Dust/Sand Whirls
MI Shallow	PL Ice Pellets	HZ Haze	
PR Partial	RA Rain	PY Spray	SQ Squalls
SH Shower(s)	SG Snow Grains	SA Sand	SS Sandstorm
TS Thunderstorm	SN Snow	VA Volcanic Ash	GL Glaze
VC In the Vicinity	UP Unkown Precipitation		

Intensity (as indicated on pages 4 to 6):  
'+' = Heavy    '' = Moderate    '-' = Light

# HUNTINGTON, WV JULY 2008

Ceilometer (30-second) data are used to derive cloudiness at or below 12,000 feet. This cloudiness is the mean cloud cover detected during sunrise to sunset (SR-SS), or midnight to midnight (MN-MN).

Satellite data are used to derive cloudiness above 12,000 feet. Effective Cloud Amount is based on the cloud cover and the transparency of the clouds within the satellite field of view (approx. 31x31 miles).

Sky Condition is based on the sum (not to exceed 8) of the sunrise to sunset cloud cover below and above 12,000 feet. Both ceilometer and satellite data must be present to compute Sky Condition. Clear = 0-2 oktas, Partly Cloudy = 3-6 oktas, Cloudy = 7-8 oktas.

A Heating (Cooling) Degree Day is the difference between the average daily temperature and 65 degrees F. The HDD season begins July 1, the CDD season begins January 1.

Dew Point is the temperature to which the air must be cooled to achieve 100% relative humidity. Wet Bulb is the temperature the air would have if cooled to saturation at constant pressure by evaporation of water into it.

Snow Depth, Snowfall, and Sunshine data may come from nearby sites that the National Weather Service deems Climatologically representative of this site.

### ADDITIONAL NOTES:

Station Augmentation-HUNTINGTON SWG PL COOP  
Lat/Lon:38.41833/-82.51 Elevation:520  
Distance:3 MI Dir:N  
Augmented Elements:Temp, Precip, Snow  
Equipment:MMS, SRG, Snowboard

Date	SUNSHINE		CLOUDINESS (OKTAS)				VISIBILITY (MILES)		RESERVED
	TOTAL MINUTES	PERCENT POSSIBLE	SR-SS		MN-MN		MINIMUM	MAXIMUM	
			Sky Cover	Satellite	Sky Cover	Satellite			
01							1.75	10.00	
02							10.00	10.00	
03							2.00	10.00	
04							0.50	8.00	
05							0.75	9.00	
06							0.00	10.00	
07							0.75	10.00	
08							4.00	10.00	
09							4.00	10.00	
10							3.00	10.00	
11							3.00	10.00	
12							0.75	10.00	
13							2.50	10.00	
14							1.25	10.00	
15							1.75	10.00	
16							5.00	10.00	
17							2.00	10.00	
18							0.75	10.00	
19							3.00	7.00	
20							3.00	10.00	
21							6.00	10.00	
22							5.00	10.00	
23							5.00	10.00	
24							3.00	10.00	
25							5.00	10.00	
26							4.00	10.00	
27							6.00	10.00	
28							4.00	10.00	
29							0.75	10.00	
30							1.25	10.00	
31							0.25	10.00	
MONTHLY AVGS							2.90	9.81	
<b>SUNSHINE (Minutes)</b>									
Total : 0			Possible : 27032						
Percent Possible : 0									
<b>NUMBER OF DAYS WITH : SKY CONDITION</b>									
Clear		Partly CLDY		Cloudy		Missing			
<b>MINIMUM VISIBILITY (MILES)</b>									
<= .25		<= 3.0				>= 7.0			
2		20				1			

# OBSERVATIONS AT 3-HOURLY INTERVALS

# HUNTINGTON, WV JULY 2008 KHTS

WBAN # 03860

HOUR (LST)	SKY COVER	CEILING 100's of FT.	SATELLITE		WEATHER	TEMPERATURE °F			WIND SPEED (MPH) DIRECTION Tens of Deg	PRESSURE (INCHES, HG)		HOUR (LST)	SKY COVER	CEILING 100's of FT.	SATELLITE		WEATHER	TEMPERATURE °F			WIND SPEED (MPH) DIRECTION Tens of Deg	PRESSURE (INCHES, HG)							
			Observation Time (LST)	Eff Cld Amt Oktas		VISIBILITY (MILES)	DRY BULB	DEW POINT		WET BULB	RELATIVE HUMIDITY (PCT)				STATION	SEA LEVEL		Observation Time (LST)	Eff Cld Amt Oktas	VISIBILITY (MILES)		DRY BULB	DEW POINT	WET BULB	RELATIVE HUMIDITY (PCT)	STATION	SEA LEVEL		
																												WEATHER	WEATHER
<b>SUNRISE: 0510 JUL 01</b>						<b>SUNSET: 1958</b>						<b>SUNRISE: 0513 JUL 07</b>						<b>SUNSET: 1957</b>											
01	BKN	085			10.00	JUL 01	59	56	57	90	5	23	29.11	30.00	01	CLR	NC			6.00	BR	68	66	67	93	3	26	29.14	30.02
04	CLR	NC			10.00		56	54	55	93	0	00	29.11	29.99	04	VV	001			1.00	BR	66	64	65	93	3	13	29.12	29.99
07	FEW	085			10.00		57	55	56	93	3	22	29.15	30.04	07	BKN	060			2.00	BR	67	64	65	90	0	00	29.15	30.03
10	CLR	NC			10.00		72	55	62	55	3	04	29.19	30.07	10	FEW	055			10.00		78	67	71	69	0	00	29.17	30.04
13	SCT	065			10.00		75	49	60	40	7	26	29.17	30.06	13	FEW	036			10.00		85	66	72	53	6	26	29.15	30.03
16	BKN	070			10.00		76	48	60	37	3	06	29.14	30.03	16	FEW	048			10.00		85	65	72	51	8	25	29.12	29.99
19	SCT	075			10.00		76	50	61	40	5	25	29.13	30.01	19	SCT	075			7.00		83	65	71	55	3	24	29.11	29.99
22	CLR	NC			10.00		66	56	60	70	0	00	29.17	30.05	22	CLR	NC			6.00	HZ	73	67	69	82	0	00	29.13	30.00
<b>SUNRISE: 0511 JUL 02</b>						<b>SUNSET: 1958</b>						<b>SUNRISE: 0514 JUL 08</b>						<b>SUNSET: 1957</b>											
01	CLR	NC			10.00		57	54	55	90	3	12	29.16	30.04	01	CLR	NC			5.00	BR	70	66	67	87	0	00	29.14	30.01
04	CLR	NC			10.00		53	51	52	93	3	21	29.16	30.04	04	OVC	095			5.00	BR	70	67	68	90	0	00	29.13	30.00
07	CLR	NC			10.00		57	53	55	87	0	00	29.20	30.09	07	CLR	NC			8.00		72	66	68	82	0	00	29.14	30.01
10	CLR	NC			10.00		73	56	63	55	5	VR	29.20	30.08	10	CLR	NC			10.00		79	68	72	69	9	23	29.14	30.01
13	FEW	065			10.00		81	54	65	39	9	25	29.17	30.05	13	CLR	NC			10.00		87	72	76	61	5	VR	29.08	29.95
16	FEW	080			10.00		83	55	66	38	8	22	29.12	30.00	16	CLR	NC			10.00		76	68	71	76	9	21	29.08	29.95
19	CLR	NC			10.00		80	56	65	44	7	21	29.08	29.96	19	CLR	NC			10.00		78	69	72	74	11	20	29.04	29.90
22	CLR	NC			10.00		71	58	63	64	3	21	29.11	29.99	22	BKN	095			10.00		75	69	71	82	6	21	29.08	29.95
<b>SUNRISE: 0511 JUL 03</b>						<b>SUNSET: 1958</b>						<b>SUNRISE: 0514 JUL 09</b>						<b>SUNSET: 1956</b>											
01	CLR	NC			10.00		70	57	62	64	7	22	29.10	29.97	01	SCT	075			10.00		75	69	71	82	9	24	29.05	29.91
04	FEW	080			10.00		67	56	61	68	8	21	29.09	29.97	04	CLR	NC			10.00		72	67	69	84	8	23	29.04	29.91
07	SCT	085			10.00		69	56	61	63	8	22	29.12	30.00	07	BKN	060			10.00		74	67	69	79	7	25	29.08	29.94
10	BKN	085			10.00		75	59	65	58	8	22	29.13	30.01	10	OVC	027			10.00		77	69	72	76	7	27	29.09	29.96
13	CLR	NC			10.00		83	58	67	43	13	24	29.11	29.99	13	BKN	050			10.00		80	70	73	72	8	26	29.08	29.94
16	SCT	110			10.00		78	61	67	56	8	26	29.09	29.97	16	BKN	055			10.00		73	70	71	90	5	28	29.05	29.93
19	FEW	050			6.00	BR	73	69	70	87	0	00	29.12	30.01	19	CLR	NC			8.00		73	70	71	90	6	23	29.08	29.95
22	OVC	120			3.00	BR	70	68	69	93	5	12	29.15	30.03	22	CLR	NC			6.00	BR	71	69	70	93	3	23	29.12	29.99
<b>SUNRISE: 0512 JUL 04</b>						<b>SUNSET: 1958</b>						<b>SUNRISE: 0515 JUL 10</b>						<b>SUNSET: 1956</b>											
01	OVC	095			2.00	BR	69	67	68	93	3	22	29.15	30.02	01	FEW	060			3.00	BR	70	68	69	93	0	00	29.15	30.02
04	BKN	031			1.75	BR	68	66	67	93	3	33	29.13	30.01	04	CLR	NC			10.00		69	65	66	87	3	36	29.16	30.03
07	OVC	065			3.00	BR	68	67	67	97	0	00	29.14	30.02	07	CLR	NC			10.00		67	61	63	81	5	01	29.20	30.08
10	OVC	044			3.00	-RA BR	68	65	66	90	5	27	29.16	30.03	10	CLR	NC			10.00		72	59	64	64	0	00	29.22	30.10
13	OVC	019			5.00	HZ	72	67	69	84	3	26	29.15	30.03	13	CLR	NC			10.00		77	57	65	50	0	00	29.24	30.12
16	OVC	055			7.00		73	68	70	84	3	03	29.11	29.99	16	CLR	NC			10.00		81	52	64	37	6	VR	29.17	30.05
19	BKN	090			6.00	BR	71	67	68	87	5	12	29.08	29.96	19	CLR	NC			10.00		78	58	66	50	3	04	29.18	30.06
22	CLR	NC			3.00	BR	69	67	68	93	5	10	29.10	29.98	22	CLR	NC			10.00		68	60	63	76	0	00	29.22	30.10
<b>SUNRISE: 0512 JUL 05</b>						<b>SUNSET: 1957</b>						<b>SUNRISE: 0516 JUL 11</b>						<b>SUNSET: 1956</b>											
01	OVC	035			1.00	BR	68	66	67	93	0	00	29.10	29.98	01	CLR	NC			10.00		63	60	61	90	0	00	29.19	30.07
04	OVC	050			3.00	BR	68	66	67	93	0	00	29.08	29.96	04	CLR	NC			7.00		60	58	59	93	0	00	29.16	30.04
07	OVC	001			0.75	BR	68	66	67	93	0	00	29.10	29.98	07	CLR	NC			5.00	BR	62	60	61	93	0	00	29.21	30.09
10	OVC	015			2.00	HZ	72	67	69	84	0	00	29.12	30.00	10	CLR	NC			10.00		76	63	68	64	6	20	29.23	30.10
13	BKN	055			6.00	HZ	77	68	71	74	0	00	29.11	29.99	13	CLR	NC			10.00		83	61	69	48	0	00	29.23	30.11
16	SCT	090			9.00		76	67	70	74	0	00	29.08	29.96	16	CLR	NC			10.00		85	61	70	45	6	21	29.19	30.07
19	FEW	080			7.00		75	66	69	74	3	06	29.07	29.94	19	CLR	NC			10.00		83	64	71	53	0	00	29.18	30.06
22	CLR	NC			3.00	BR	70	67	68	90	0	00	29.10	29.98	22	CLR	NC			10.00		72	66	68	82	0	00	29.22	30.09
<b>SUNRISE: 0513 JUL 06</b>						<b>SUNSET: 1957</b>						<b>SUNRISE: 0516 JUL 12</b>						<b>SUNSET: 1955</b>											
01	OVC	010			0.25	FG	67	66	66	97	0	00	29.09	29.97	01	CLR	NC			7.00		67	65	66	93	0	00	29.21	30.09
04	OVC	007			0.25	FG	64	63	63	97	0	00	29.08	29.96	04	CLR	NC			4.00	BR	65	63	64	93	0	00	29.18	30.05
07	VV	001			0.00	FG	65	64	64	97	0	00	29.12	30.00	07	CLR	NC			5.00	BR	68	65	66	90	0	00	29.19	30.06
10	OVC	001			2.50	BR	69	67	68	93	0	00	29.14	30.02	10	CLR	NC			10.00		81	67	72	63	7	21	29.20	30.07
13	SCT	022			5.00	HZ	80	69	73	69	6	21	29.13	30.01	13	FEW	046			10.00		87	67	73	52	5	VR	29.15	30.02
16	BKN	065			10.00		84	67	73	57	5	03	29.09	29.97	16	CLR	NC			3.00	HZ	77	71	73	82	0	00	29.09	29.97
19	FEW	065			10.00		82	66	71	58	0	00	29.09	29.97	19	CLR	NC			10.00		80	73	75	79	5	21	29.05	29.93
22	CLR	NC			7.00		72	68	69	87	3	21	29.11	29.99	22	CLR	NC			10.00		75	71	72	87	3	23	29.08	29.94

# OBSERVATIONS AT 3-HOURLY INTERVALS

# HUNTINGTON, WV JULY 2008 KHTS

WBAN # 03860

HOUR (LST)	SKY COVER	CEILING 100's of FT.	SATELLITE		VISIBILITY (MILES)	WEATHER	TEMPERATURE °F			RELATIVE HUMIDITY (PCT)	WIND		PRESSURE (INCHES, HG)																
			Observation Time (LST)	Eff Cld Amt Oktas			DRY BULB	DEW POINT	WET BULB		SPEED (MPH)	DIRECTION Tens of Deg	STATION	SEA LEVEL															
															Observation Time (LST)	Eff Cld Amt Oktas	DRY BULB	DEW POINT	WET BULB	RELATIVE HUMIDITY (PCT)	SPEED (MPH)	DIRECTION Tens of Deg	STATION	SEA LEVEL					
SUNRISE: 0517							JUL 13							SUNSET: 1955															
01	CLR	NC			10.00		74	69	71	84	6	22	29.03	29.89	01	CLR	NC			7.00		67	63	65	87	0	00	29.14	30.02
04	CLR	NC			10.00		72	67	69	84	6	22	28.98	29.85	04	CLR	NC			3.00	BR	64	62	63	93	0	00	29.13	30.01
07	OVC	070			10.00		72	68	69	87	6	25	29.02	29.88	07	BKN	090			4.00	BR	66	62	64	87	0	00	29.16	30.04
10	BKN	034			8.00		74	71	72	90	3	25	29.01	29.88	10	CLR	NC			6.00	HZ	81	66	71	60	5	23	29.18	30.05
13	BKN	020			2.50	-RA BR	73	71	72	93	3	26	28.99	29.85	13	FEW	090			7.00		89	65	73	45	10	22	29.15	30.03
16	SCT	026			8.00		76	70	72	82	8	21	28.94	29.80	16	SCT	065			6.00	HZ	91	63	72	39	7	25	29.12	29.99
19	BKN	044			10.00		77	71	73	82	3	VR	28.96	29.82	19	CLR	NC			6.00	HZ	86	65	72	50	3	23	29.09	29.97
22	CLR	NC			10.00		67	58	62	73	0	00	29.01	29.88	22	CLR	NC			5.00	HZ	76	68	71	76	0	00	29.11	29.98
SUNRISE: 0518							JUL 14							SUNSET: 1954															
01	CLR	NC			5.00	BR	62	61	61	97	0	00	29.02	29.89	01	CLR	NC			3.00	BR	71	68	69	90	0	00	29.10	29.97
04	FEW	070			1.25	BR	60	59	59	97	0	00	29.02	29.89	04	CLR	NC			5.00	HZ	71	65	67	81	3	22	29.12	29.99
07	CLR	NC			7.00		61	60	60	97	0	00	29.05	29.93	07	CLR	NC			4.00	HZ	72	66	68	82	3	20	29.13	30.00
10	CLR	NC			10.00		75	55	63	50	3	VR	29.08	29.96	10	FEW	080			5.00	HZ	83	69	73	63	8	22	29.13	30.00
13	CLR	NC			10.00		79	54	64	42	3	36	29.08	29.96	13	FEW	050			9.00		91	67	75	45	7	24	29.10	29.97
16	OVC	070			10.00		81	55	65	41	3	04	29.08	29.95	16	SCT	075			10.00		92	67	75	44	8	29	29.05	29.92
19	BKN	080			10.00		78	57	65	49	3	14	29.08	29.95	19	BKN	070			7.00	-TSRA	71	64	67	79	22	30	29.11	29.99
22	CLR	NC			10.00		69	62	65	79	0	00	29.12	30.00	22	CLR	NC			10.00		69	67	68	93	3	23	29.07	29.93
SUNRISE: 0519							JUL 15							SUNSET: 1954															
01	CLR	NC			9.00		63	60	61	90	0	00	29.14	30.02	01	CLR	NC			10.00		69	67	68	93	5	22	29.08	29.94
04	CLR	NC			1.75	BR	60	59	59	97	0	00	29.16	30.03	04	OVC	080			7.00		69	67	68	93	6	23	29.08	29.94
07	CLR	NC			7.00		62	60	61	93	0	00	29.21	30.09	07	CLR	NC			10.00		70	66	67	87	0	00	29.09	29.96
10	CLR	NC			10.00		78	59	66	52	5	04	29.25	30.13	10	CLR	NC			10.00		81	69	73	67	0	00	29.09	29.97
13	FEW	070			10.00		83	52	64	34	0	00	29.25	30.13	13	SCT	036			10.00		86	71	76	61	5	VR	29.10	29.97
16	CLR	NC			10.00		83	51	64	33	0	00	29.22	30.10	16	FEW	050			10.00		88	65	73	47	0	00	29.03	29.89
19	CLR	NC			10.00		80	55	65	42	3	06	29.23	30.11	19	CLR	NC			10.00		87	66	73	50	3	25	29.02	29.88
22	CLR	NC			10.00		68	59	63	73	0	00	29.27	30.14	22	SCT	070			8.00		78	70	73	77	0	00	29.05	29.91
SUNRISE: 0519							JUL 16							SUNSET: 1953															
01	CLR	NC			9.00		62	59	60	90	0	00	29.27	30.15	01	BKN	110			5.00	BR	75	71	72	87	3	22	29.05	29.92
04	CLR	NC			5.00	BR	59	57	58	93	0	00	29.27	30.15	04	CLR	NC			7.00		73	69	70	87	3	29	29.07	29.93
07	CLR	NC			6.00	BR	62	59	60	90	0	00	29.33	30.21	07	CLR	NC			10.00		69	65	66	87	5	15	29.11	29.99
10	CLR	NC			10.00		78	62	68	58	0	00	29.33	30.21	10	CLR	NC			10.00		79	64	69	60	8	18	29.10	29.97
13	CLR	NC			10.00		85	59	68	41	7	07	29.32	30.20	13	CLR	NC			10.00		86	64	71	48	8	25	29.08	29.95
16	CLR	NC			10.00		87	57	68	36	0	00	29.27	30.15	16	BKN	095			10.00		90	64	73	42	7	22	29.04	29.90
19	CLR	NC			10.00		83	60	68	46	3	05	29.27	30.15	19	SCT	060			10.00		77	65	69	67	13	20	29.04	29.91
22	CLR	NC			10.00		72	62	66	71	0	00	29.30	30.18	22	FEW	060			10.00		70	65	67	84	6	20	29.08	29.96
SUNRISE: 0520							JUL 17							SUNSET: 1953															
01	CLR	NC			5.00	BR	65	62	63	90	0	00	29.29	30.17	01	SCT	100			10.00		68	64	65	87	0	00	29.05	29.93
04	CLR	NC			3.00	BR	63	61	62	93	0	00	29.28	30.15	04	BKN	085			10.00		68	65	66	90	5	22	29.07	29.93
07	CLR	NC			2.00	BR	66	63	64	90	3	03	29.31	30.19	07	BKN	048			6.00	BR	68	65	66	90	5	24	29.08	29.95
10	CLR	NC			10.00		79	64	69	60	5	21	29.30	30.18	10	BKN	100			5.00		71	66	68	84	0	00	29.09	29.96
13	CLR	NC			10.00		87	58	69	37	6	22	29.28	30.15	13	SCT	021			10.00		77	64	69	64	9	30	29.08	29.95
16	CLR	NC			10.00		89	57	69	34	3	VR	29.24	30.11	16	FEW	047			10.00		81	57	66	44	10	33	29.08	29.96
19	CLR	NC			10.00		85	61	70	45	3	07	29.20	30.08	19	CLR	NC			10.00		76	54	63	47	10	35	29.10	29.98
22	CLR	NC			10.00		74	66	69	76	0	00	29.21	30.09	22	CLR	NC			10.00		69	56	61	63	0	00	29.14	30.02
SUNRISE: 0521							JUL 18							SUNSET: 1952															
01	CLR	NC			7.00		69	65	66	87	0	00	29.19	30.06	01	CLR	NC			7.00		61	59	60	93	0	00	29.14	30.01
04	CLR	NC			3.00	BR	66	64	65	93	0	00	29.18	30.05	04	CLR	NC			8.00		59	57	58	93	0	00	29.16	30.03
07	CLR	NC			3.00	BR	66	64	65	93	0	00	29.20	30.08	07	CLR	NC			3.00	BR	60	58	59	93	0	00	29.18	30.06
10	CLR	NC			10.00		82	63	70	53	6	21	29.21	30.09	10	CLR	NC			10.00		77	54	63	45	3	16	29.20	30.08
13	CLR	NC			10.00		88	57	68	35	6	VR	29.18	30.05	13	SCT	075			10.00		80	52	63	38	5	24	29.20	30.08
16	CLR	NC			10.00		90	52	67	27	7	25	29.14	30.01	16	OVC	070			10.00		81	49	62	33	3	11	29.18	30.06
19	CLR	NC			10.00		87	57	68	36	0	00	29.13	30.01	19	SCT	075			10.00		78	54	64	44	0	00	29.17	30.06
22	CLR	NC			9.00		72	64	67	76	0	00	29.14	30.02	22	CLR	NC			10.00		67	58	62	73	0	00	29.20	30.08

# OBSERVATIONS AT 3-HOURLY INTERVALS

# HUNTINGTON, WV JULY 2008 KHTS

WBAN # 03860

HOUR (LST)	SKY COVER	CEILING 100's of FT.	SATELLITE		WEATHER	TEMPERATURE °F			WIND SPEED (MPH) DIRECTION Tens of Deg	PRESSURE (INCHES, HG)			
			Observation Time (LST)	Eff Cl'd Amt Oktas		VISIBILITY (MILES)	DRY BULB	DEW POINT		WET BULB	RELATIVE HUMIDITY (PCT)	STATION	SEA LEVEL
01	CLR	NC				62	59	60	90	0	00	29.20	30.09
04	FEW	070			BR	60	58	59	93	0	00	29.21	30.09
07	CLR	NC				62	59	60	90	0	00	29.23	30.11
10	BKN	110				78	58	66	50	6	20	29.22	30.10
13	CLR	NC				85	55	66	36	8	26	29.20	30.08
16	BKN	080				86	58	68	39	7	20	29.16	30.03
19	BKN	085				82	61	69	49	3	23	29.13	30.01
22	OVC	080				76	64	68	67	0	00	29.15	30.02
		SUNRISE: 0527		JUL 26		SUNSET: 1947							
01	BKN	090				73	63	67	71	5	24	29.14	30.01
04	CLR	NC				68	64	65	87	3	20	29.11	29.98
07	OVC	055				69	64	66	84	0	00	29.12	30.00
10	OVC	065				74	66	69	76	3	23	29.12	29.99
13	SCT	080				83	67	72	59	3	VR	29.09	29.96
16	SCT	075				87	66	73	50	7	VR	29.03	29.89
19	FEW	080				84	67	73	57	3	21	29.00	29.86
22	CLR	NC				76	69	71	79	3	12	29.00	29.86
		SUNRISE: 0528		JUL 27		SUNSET: 1946							
01	BKN	055			BR	74	70	71	87	5	05	29.01	29.87
04	BKN	100			HZ	72	66	68	82	5	30	29.01	29.87
07	FEW	055				72	66	68	82	3	36	29.04	29.90
10	FEW	055				79	61	68	54	0	00	29.05	29.92
13	FEW	055				83	56	66	40	0	00	29.05	29.91
16	CLR	NC				86	53	66	32	6	VR	29.03	29.89
19	CLR	NC				80	55	65	42	5	34	29.00	29.87
22	CLR	NC				70	58	63	66	0	00	29.04	29.91
		SUNRISE: 0529		JUL 28		SUNSET: 1945							
01	CLR	NC				63	59	61	87	3	11	29.04	29.90
04	CLR	NC				60	57	58	90	0	00	29.03	29.89
07	CLR	NC				61	58	59	90	0	00	29.05	29.92
10	CLR	NC				72	62	66	71	3	VR	29.04	29.91
13	FEW	100				78	64	69	62	3	09	29.03	29.90
16	SCT	100				76	68	71	76	0	00	29.01	29.89
19	CLR	NC				77	68	71	74	0	00	29.02	29.89
22	OVC	110				72	67	69	84	0	00	29.05	29.93
		SUNRISE: 0530		JUL 29		SUNSET: 1944							
01	CLR	NC				68	66	67	93	0	00	29.05	29.93
04	CLR	NC			BR	65	64	64	97	0	00	29.05	29.91
07	CLR	NC				67	65	66	93	0	00	29.07	29.93
10	CLR	NC				79	68	72	69	0	00	29.08	29.95
13	BKN	050				85	66	72	53	3	08	29.05	29.92
16	CLR	NC				90	63	72	41	0	00	29.02	29.88
19	CLR	NC				85	65	72	51	0	00	28.99	29.85
22	CLR	NC				76	68	71	76	0	00	29.02	29.89
		SUNRISE: 0530		JUL 30		SUNSET: 1943							
01	CLR	NC			BR	71	68	69	90	0	00	29.01	29.88
04	CLR	NC			BR	69	67	68	93	0	00	28.98	29.84
07	CLR	NC			BR	71	68	69	90	3	26	28.98	29.84
10	CLR	NC				81	70	73	69	7	22	29.00	29.86
13	FEW	041				89	67	74	48	7	27	28.98	29.84
16	CLR	NC				88	64	72	45	8	28	28.93	29.79
19	CLR	NC				84	68	73	59	7	25	28.92	29.78
22	FEW	110				77	70	72	79	5	25	28.94	29.80

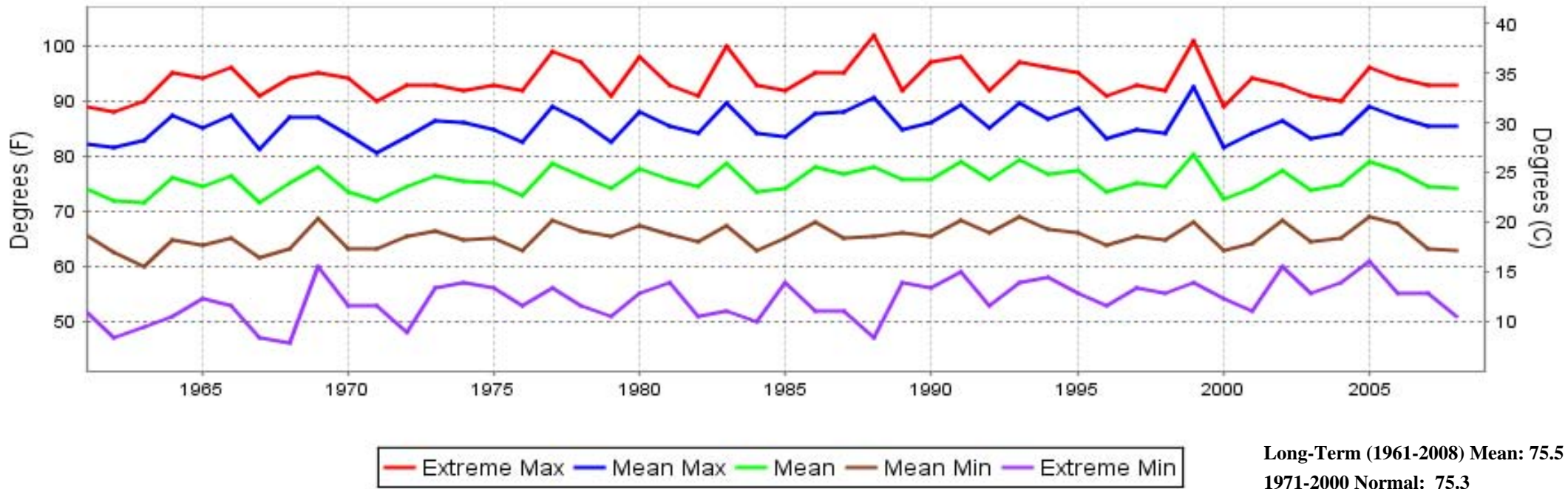
HOUR (LST)	SKY COVER	CEILING 100's of FT.	SATELLITE		WEATHER	TEMPERATURE °F			WIND SPEED (MPH) DIRECTION Tens of Deg	PRESSURE (INCHES, HG)			
			Observation Time (LST)	Eff Cl'd Amt Oktas		VISIBILITY (MILES)	DRY BULB	DEW POINT		WET BULB	RELATIVE HUMIDITY (PCT)	STATION	SEA LEVEL
01	FEW	100				75	69	71	82	3	23	28.93	29.79
04	OVC	095			TS+RA BR	73	70	71	90	8	24	28.95	29.81
07	OVC	010			-RA BR	71	69	70	93	5	22	28.95	29.81
10	BKN	085			BR	73	71	72	93	6	22	28.94	29.80
13	OVC	065				76	70	72	82	7	21	28.93	29.80
16	BKN	090				79	69	72	72	0	00	28.88	29.74
19	FEW	090				80	70	73	72	3	23	28.87	29.73
22	SCT	095				74	71	72	90	0	00	28.91	29.77

**3-HOURLY OBSERVATION NOTES**  
 Sky Cover is the amount of the sky obscured. CLR or SKC = 0, FEW = 1/8-2/8, SCT = 3/8-4/8, BKN = 5/8-7/8, OVC = 8/8, W = Vertical Visibility = 8/8  
 Ceiling is reported in hundreds of feet above ground level for clouds at or below 12,000 feet. NC = No Ceiling detected.  
 & = Original observation contained additional weather elements.  
 See page 3 for additional notes.

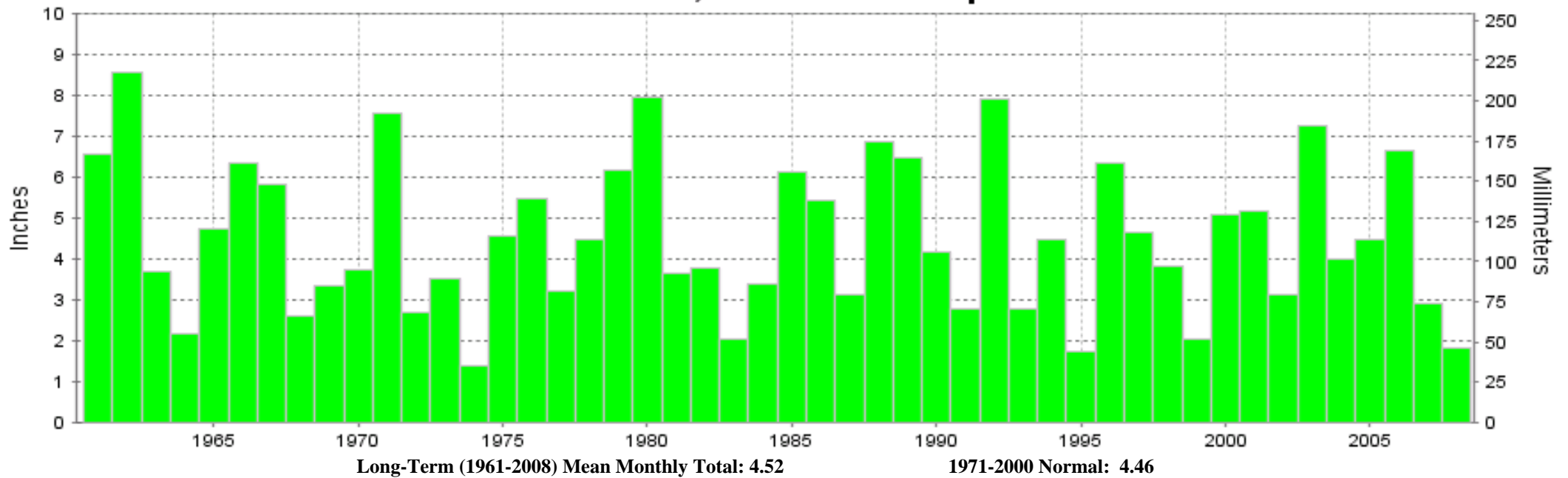
## SUMMARY BY HOUR

HOUR (LST)	AVERAGES								RESULTANT WIND (MPH)			
	CEILOMETER	EFF CLD AMT	DRY BULB	DEW POINT	WET BULB	RELATIVE HUMIDITY	PRESSURE (Inches, HG)		VISIBILITY (Miles)	WIND SPEED (MPH)	SPEED	DIRECTION
							STATION	SEA LEVEL				
01			68	64	65	88	29.11	29.99	7.01	2	3	22
02			67	64	65	89	29.11	29.98	6.78	1	3	20
03			66	63	64	90	29.10	29.97	6.26	2	3	21
04			65	63	64	90	29.11	29.98	5.68	2	3	23
05			65	62	63	91	29.11	29.99	5.69	3	2	21
06			64	62	63	91	29.12	30.00	5.03	2	3	20
07			66	63	64	88	29.13	30.01	5.98	2	3	22
08			70	64	66	81	29.14	30.02	7.69	3	3	23
09			73	64	67	73	29.14	30.02	8.46	3	3	24
10			76	64	68	67	29.14	30.02	8.53	4	3	24
11			79	63	69	61	29.14	30.02	9.03	4	4	24
12			81	63	69	56	29.14	30.01	9.52	5	5	25
13			82	62	70	53	29.13	30.00	9.18	5	4	25
14			83	62	69	50	29.11	29.98	9.45	6	3	24
15			83	61	69	51	29.10	29.97	9.02	6	4	25
16			83	61	69	51	29.09	29.96	9.39	5	4	24
17			82	62	69	52	29.08	29.95	9.32	5	2	23
18			82	62	69	54	29.08	29.95	9.26	4	2	21
19			80	63	69	59	29.08	29.96	9.13	4	2	23
20			77	63	68	64	29.09	29.96	9.02	3	2	20
21			74	64	68	72	29.10	29.97	8.71	2	2	18
22			72	65	67	79	29.11	29.98	8.52	1	3	19
23			70	65	67	84	29.11	29.98	8.15	2	3	20
24			69	65	66	87	29.11	29.98	7.15	2	3	20

## HUNTINGTON, WV JULY Temperatures



## HUNTINGTON, WV JULY Precipitation







**JULY 2008  
HUNTINGTON, WV**

**LOCAL CLIMATOLOGICAL DATA  
NOAA, National Climatic Data Center**

*I certify that this is an official publication of the National Oceanic and Atmospheric Administration (NOAA). It is compiled using information from weather observing sites operated by NOAA-National Weather Service / Department Of Transportation-Federal Aviation Administration and received at the National Climatic Data Center (NCDC), Asheville, North Carolina 28801.*

**DIRECTOR**

NCDC now offers an annual online subscription for the **Edited Local Climatological Data Publication**. When you purchase this subscription service, you will have **immediate online access** to all previous publications back to July 1996 and all publications thereafter until the expiration of the subscription. Your subscription is valid for one year after purchase. **The total cost for online delivery (including back issues) is significantly less than the cost for offline delivery.** To order this and other subscriptions online with your credit card, go to: **www.ncdc.noaa.gov** and choose subscriptions.

We welcome your questions or comments, please contact us at:

Toll Free Number (866) 742-3322 (voice)  
Fax Number : (304) 726-4409

TDD : (828) 271-4010

or Email : [ncdc.info@noaa.gov](mailto:ncdc.info@noaa.gov)

Local Climatological Data is available at [www.ncdc.noaa.gov](http://www.ncdc.noaa.gov)

United States  
Department of Commerce

National Oceanic and  
Atmospheric Administration

National Environmental Satellite  
Atmospheric Administration

For address correction, please return a photocopy of this page to Subscription Services indicating changes

NCDC Subscription Services Center  
310 State Route 956 Building 300  
Rocket Center, WV 26726

OFFICIAL BUSINESS, PENALTY FOR PRIVATE USE \$300

FIRST CLASS  
POSTAGE AND FEES PAID  
NOAA  
PERMIT G-19