



# AUGUST 2009

## LOCAL CLIMATOLOGICAL DATA

### NOAA, National Climatic Data Center

**HUNTINGTON, WV**  
**TRI-STATE/M.J.FERGUSON FIELD AIRPORT (KHTS)**  
 Lat:38 ° 22'N Long: 82 ° 33'W Elev (Ground) 824 Feet  
 Time Zone : EASTERN WBAN: 03860 ISSN#: 0198-5655



Date	Temperature °F						Deg Days BASE 65°		WEATHER	SNOW/ICE ON GND(IN)		PRECIPITATION ON GND(IN)		PRESSURE (INCHES OF HG)		WIND SPEED = MPH DIR = TENS OF DEGREES								Date
	MAXIMUM	MINIMUM	AVERAGE	DEP FROM NORMAL	AVERAGE DEW PT	AVERAGE WET BULB	HEATING	COOLING		0700 LST	1300 LST	2400 LST	2400 LST	AVERAGE STATION	AVERAGE SEA LEVEL	RESULTANT SPEED	RES DIR	AVERAGE SPEED	MAXIMUM					
																			3-SEC		2-MIN			
1	2	3	4	5	6	7	8	9	10	11	12	13	14	15	16	17	18	19	20	21	22	23	24	
01	83	61	72	-3	65	68	0	7	RA FG+ FG BR	0		0.0	T	29.14	30.01	3.2	21	3.5	15	19	10	20	01	
02	81	64	73	-2	65	68	0	8	RA BR	0		0.0	0.40	29.05	29.93	4.7	26	5.7	21	26	14	25	02	
03	80	57	69	-6	61	64	0	4	FG+ FG BR	0		0.0	0.00	29.15	30.03	1.7	20	2.3	14	18	10	21	03	
04	71	61	66	-9	63	64	0	1	TS TSRA RA FG BR	0		0.0	0.94	29.08	29.98	2.5	22	4.2	21	28	15	20	04	
05	73	63	68	-7	65	65	0	3	RA FG+ FG BR HZ	0		0.0	0.16	29.12	30.01	0.3	26	0.6	12	25	6	19	05	
06	81	64	73	-2	64	66	0	8	FG+ FG BR HZ	0		0.0	0.00	29.15	30.04	2.1	32	2.4	13	35	9	35	06	
07	80	57	69	-6	59	63	0	4	BR	0		0.0	0.00	29.26	30.16	0.5	14	1.0	10	12	7	10	07	
08	84	63	74	-1	68	69	0	9	RA BR HZ	0		0.0	0.01	29.27	30.14	2.6	19	2.7	10	20	8	18	08	
09	89	67	78	3	71	73	0	13	FG+ FG BR HZ	0		0.0	0.00	29.25	30.13	3.1	23	3.5	18	23	14	26	09	
10	87	70	79*	4	72	73	0	14	TS TSRA RA FG BR	0		0.0	0.54	29.19	30.05	3.0	21	4.8	24	32	18	33	10	
11	85	68	77	2	70	72	0	12	TS BR	0		0.0	0.00	29.10	29.97	2.5	22	3.5	15	19	9	21	11	
12	85	67	76	1	66	69	0	11	BR	0		0.0	0.00	29.10	29.99	0.1	19	3.4	20	01	14	01	12	
13	83	64	74	0	65	68	0	9	FG+ BR HZ	0		0.0	0.00	29.20	30.09	0.3	36	0.9	8	11	6	32	13	
14	88	63	76	2	66	69	0	11	FG+ FG BR HZ	0		0.0	0.00	29.24	30.13	0.5	33	1.0	9	04	7	04	14	
15	88	65	77	3	68	71	0	12	FG+ FG BR	0		0.0	0.00	29.24	30.12	0.2	14	0.5	24	22	7	13	15	
16	89	67	78	4	69	71	0	13	FG BR	0		0.0	0.00	29.26	30.14	1.0	19	1.6	18	21	9	20	16	
17	87	67	77	3	70	72	0	12	RA FG+ FG BR	0		0.0	0.14	29.26	30.14	2.2	20	2.4	25	19	20*	19	17	
18	82	71	77	3	71	72	0	12	RA FG BR	0		0.0	0.35	29.21	30.08	4.4	21	4.7	17	21	12	23	18	
19	85	71	78	4	70	72	0	13		0		0.0	0.00	29.12	29.98	4.2	18	4.7	18	20	13	17	19	
20	87	69	78	4	70	72	0	13	RA	0		0.0	T	29.02	29.88	8.3	20	8.5	26	16	17	18	20	
21	83	65	74	0	64	68	0	9	RA	0		0.0	T	29.00	29.87	5.2	24	5.8	24	26	16	25	21	
22	80	62	71	-3	61	64	0	6	FG BR	0		0.0	0.00	29.00	29.89	2.4	31	3.8	17	31	13	31	22	
23	76	60	68	-6	57	61	0	3		0		0.0	0.00	29.11	30.00	2.8	36	3.5	14	01	9	33	23	
24	79	57	68	-6	58	62	0	3	FG+ BR	0		0.0	0.00	29.22	30.12	1.8	02	2.1	26	22	9	04	24	
25	85	58	72	-1	64	67	0	7	FG+ FG BR HZ	0		0.0	0.00	29.23	30.11	0.4	12	0.6	9	11	6	13	25	
26	87	64	76	4	68	70	0	11	FG+ FG BR HZ	0		0.0	0.00	29.21	30.08	0.7	25	1.5	10	27	7	32	26	
27	90*	65	78	6	68	70	0	13	FG+ FG BR HZ	0		0.0	0.00	29.18	30.04	0.2	19	0.4	9	03	7	22	27	
28	80	69	75	3	68	70	0	10	RA BR	0		0.0	T	29.08	29.94	3.8	19	4.0	23	32	12	20	28	
29	82	64	73	1	63	67	0	8	RA BR	0		0.0	0.02	28.95	29.82	3.8	26	4.7	17	25	13	31	29	
30	76	57	67	-5	55	59	0	2	FG BR	0		0.0	0.00	29.11	30.02	2.8	32	4.6	17	33	12	32	30	
31	75	52*	64*	-7	51	56	1	0		0		0.0	0.00	29.26	30.16	4.2	03	4.9	30*	08	12	06	31	

82.6	63.6	73.1	☼	65.0	67.6	0.0	8.4	< MONTHLY AVERAGES   TOTALS >				0.0	2.56	29.15	30.03	1.4	23	3.2	< MONTHLY AVERAGES			
-1.1	-0.5	-0.8		-----DEPARTURE FROM NORMAL -----								-1.32	SUNSHINE, CLOUD, & VISIBILITY TABLES ON PAGE 3									
<b>DEGREE DAYS</b>								GREATEST 24-HR PRECIPITATION : 0.94 DATE : 04				SEA LEVEL PRESSURE				DATE TIME						
MONTHLY				SEASON TO DATE				GREATEST 24-HR SNOWFALL : 0.0 DATE :				MAXIMUM : 30.20 17 1051										
TOTAL DEPARTURE				TOTAL DEPARTURE				GREATEST SNOW DEPTH : 0 DATE :				MINIMUM : 29.79 29 1625										
HEATING :		1 -1		3 -1				NUMBER OF -> DAYS WITH		MAXIMUM TEMP >= 90 : 1		MINIMUM TEMP <= 32 : 0		PRECIPITATION >= 0.01 INCH: 8								
COOLING :		261 -33		812 -150						MAXIMUM TEMP <= 32 : 0		MINIMUM TEMP <= 0 : 0		PRECIPITATION >= 0.10 INCH: 6								
										THUNDERSTORMS : 3		HEAVY FOG : 13		SNOWFALL >= 1.0 INCH : 0								

AUGUST 2009  
HUNTINGTON, WV

# HOURLY PRECIPITATION

(WATER EQUIVALENT IN INCHES)

HUNTINGTON, WV (KHTS)  
AUGUST 2009

WBAN # 03860

Date	FOR HOUR (LST) ENDING AT												Date	FOR HOUR (LST) ENDING AT												Date	Sum of Hourly Data	2400 LST Water Equiv.
	1	2	3	4	5	6	7	8	9	10	11	12		13	14	15	16	17	18	19	20	21	22	23	24			
01													01												01	T	T	
02	0.06	0.10	0.16	0.08	T	T	T						02												02	0.40	0.40	
03													03												03	0.00	0.00	
04									0.61	0.15	0.08	T	04			T	0.05	0.05	T					04	0.94	0.94		
05								T	0.05	0.08	0.03	T	05											05	0.16	0.16		
06													06											06	0.00	0.00		
07													07											07	0.00	0.00		
08								0.01	T				08											08	0.01	0.01		
09													09											09	0.00	0.00		
10						T	0.09	T				0.35	10			T	T	0.02		0.07	T	T	0.01	10	0.54	0.54		
11													11											11	0.00	0.00		
12													12											12	0.00	0.00		
13													13											13	0.00	0.00		
14													14											14	0.00	0.00		
15													15											15	0.00	0.00		
16													16											16	0.00	0.00		
17													17				0.14							17	0.14	0.14		
18						T	0.07	0.22	0.04	0.01	T		18		T	0.01							18	0.35	0.35			
19													19											19	0.00	0.00		
20													20				T		T					20	T	T		
21						T							21											21	T	T		
22													22											22	0.00	0.00		
23													23											23	0.00	0.00		
24													24											24	0.00	0.00		
25													25											25	0.00	0.00		
26													26											26	0.00	0.00		
27													27											27	0.00	0.00		
28				T	T	T	T	T	T				28	T									T	28	T	T		
29													29											29	0.02	0.02		
30											0.02	T	30										T	30	0.00	0.00		
31													31											31	0.00	0.00		

\* Indicates sum of Hourly and Daily disagree.

### MAXIMUM SHORT DURATION PRECIPITATION (See Note)

Time Period (Minutes)	5	10	15	20	30	45	60	80	100	120	150	180
Precipitation (Inches)	0.25	0.40	0.52	0.57	0.62	0.63	0.68	0.75	0.83	0.84	0.84	0.84
Ending Date	04	04	04	04	04	04	04	04	04	04	04	04
Ending Time (Hr/Min)	0847	0852	0856	0858	0900	0907	0932	0952	1013	1022	1022	1022

Note : The hourly and daily precipitation totals are printed in the last 2 columns and hi-lighted in red when they disagree. NWS does not edit ASOS hourly values but may edit daily and monthly totals. Hourly, daily, and monthly totals are printed as reported by the ASOS site.

Date and time are not entered for TRACE amounts.

# REFERENCE NOTES & SUPPLEMENTAL SUMMARIES

\* = Extreme for the month (last occurrence if more than one).

T = Trace precipitation amount.

+ = also occurs on earlier date.

FG+ = Heavy fog, visibility .25 miles or less.

BLANK entries denote missing or unreported data.

Resultant wind is the vector sum of the wind speeds and directions divided by the number of observations.

Wind direction is recorded in tens of degrees (2 digits) clockwise from true north. '00' = calm, 'VR' = variable.

Precipitation is for the 24-hour period ending at the time indicated in the column heading.

Water Equivalent of snow on the ground is reported only when the depth is 2 or more inches.

NORMALS ARE FOR THE YEARS 1971-2000

## WEATHER NOTATIONS

QUALIFIER	WEATHER PHENOMENA		
DESCRIPTOR	PRECIPITATION	OBSCURATION	OTHER
BC Patches	DZ Drizzle	BR Mist	DS Duststorm
BL Blowing	GR Hail	DU Widespread Dust	FC Funnel Cloud
DR Low Drifting	GS Small Hail and/or Snow Pellets	FG Fog	+FC Tornado Waterspout
FZ Freezing	IC Ice Crystals	FU Smoke	PO Well-Developed Dust/Sand Whirls
MI Shallow	PL Ice Pellets	HZ Haze	
PR Partial	RA Rain	PY Spray	SQ Squalls
SH Shower(s)	SG Snow Grains	SA Sand	SS Sandstorm
TS Thunderstorm	SN Snow	VA Volcanic Ash	GL Glaze
VC In the Vicinity	UP Unkown Precipitation		

Intensity (as indicated on pages 4 to 6):  
'+' = Heavy    '' = Moderate    '-' = Light

# HUNTINGTON, WV AUGUST 2009

Ceilometer (30-second) data are used to derive cloudiness at or below 12,000 feet. This cloudiness is the mean cloud cover detected during sunrise to sunset (SR-SS), or midnight to midnight (MN-MN).

Satellite data are used to derive cloudiness above 12,000 feet. Effective Cloud Amount is based on the cloud cover and the transparency of the clouds within the satellite field of view (approx. 31x31 miles).

Sky Condition is based on the sum (not to exceed 8) of the sunrise to sunset cloud cover below and above 12,000 feet. Both ceilometer and satellite data must be present to compute Sky Condition. Clear = 0-2 oktas, Partly Cloudy = 3-6 oktas, Cloudy = 7-8 oktas.

A Heating (Cooling) Degree Day is the difference between the average daily temperature and 65 degrees F. The HDD season begins July 1, the CDD season begins January 1.

Dew Point is the temperature to which the air must be cooled to achieve 100% relative humidity. Wet Bulb is the temperature the air would have if cooled to saturation at constant pressure by evaporation of water into it.

Snow Depth, Snowfall, and Sunshine data may come from nearby sites that the National Weather Service deems Climatologically representative of this site.

### ADDITIONAL NOTES:

Station Augmentation-HUNTINGTON SWG PL COOP  
 Lat/Lon:38.41833/-82.51 Elevation:520  
 Distance:3 MI Dir:N  
 Augmented Elements:Temp, Precip, Snow  
 Equipment:MMS, SRG, Snowboard

Date	SUNSHINE		CLOUDINESS (OKTAS)				VISIBILITY (MILES)		RESERVED
	TOTAL MINUTES	PERCENT POSSIBLE	SR-SS		MN-MN		MINIMUM	MAXIMUM	
			Sky Cover	Satellite	Sky Cover	Satellite			
01							0.00	10.00	
02							1.75	10.00	
03							0.00	10.00	
04							0.75	10.00	
05							0.25	10.00	
06							0.00	10.00	
07							4.00	10.00	
08							3.00	10.00	
09							0.00	10.00	
10							2.00	10.00	
11							5.00	10.00	
12							4.00	10.00	
13							0.00	10.00	
14							0.00	8.00	
15							0.00	10.00	
16							0.50	10.00	
17							0.75	10.00	
18							1.50	10.00	
19							9.00	10.00	
20							7.00	10.00	
21							10.00	10.00	
22							1.00	10.00	
23							10.00	10.00	
24							4.00	10.00	
25							0.00	10.00	
26							0.25	10.00	
27							0.00	10.00	
28							2.50	10.00	
29							5.00	10.00	
30							4.00	10.00	
31							10.00	10.00	
MONTHLY AVGS							2.78	9.94	
<b>SUNSHINE (Minutes)</b>									
Total : 0					Possible : 25341				
Percent Possible : 0									
<b>NUMBER OF DAYS WITH : SKY CONDITION</b>									
Clear		Partly CLDY			Cloudy			Missing	
<b>MINIMUM VISIBILITY (MILES)</b>									
<= .25			<= 3.0				>= 7.0		
11			20				5		

# OBSERVATIONS AT 3-HOURLY INTERVALS

HUNTINGTON, WV  
AUGUST 2009 KHTS

WBAN # 03860

HOUR (LST)	SKY COVER	CEILING 100's of FT.	SATELLITE		WEATHER	TEMPERATURE °F			WIND SPEED (MPH) DIRECTION Tens of Deg	PRESSURE (INCHES, HG)		HOUR (LST)	SKY COVER	CEILING 100's of FT.	SATELLITE		WEATHER	TEMPERATURE °F			WIND SPEED (MPH) DIRECTION Tens of Deg	PRESSURE (INCHES, HG)							
			Observation Time (LST)	Eff Cld Amt Oktas		VISIBILITY (MILES)	DRY BULB	DEW POINT		WET BULB	RELATIVE HUMIDITY (PCT)				STATION	SEA LEVEL		Observation Time (LST)	Eff Cld Amt Oktas	VISIBILITY (MILES)		DRY BULB	DEW POINT	WET BULB	RELATIVE HUMIDITY (PCT)	STATION	SEA LEVEL		
																												Observation Time (LST)	Eff Cld Amt Oktas
<b>SUNRISE: 0532 AUG 01</b>						<b>SUNSET: 1941</b>						<b>SUNRISE: 0537 AUG 07</b>						<b>SUNSET: 1935</b>											
01	SCT	075			3.00	BR	67	64	65	90	0	00	29.17	30.05	01	CLR	NC			10.00	BR	64	59	61	84	0	00	29.22	30.10
04	FEW	001			2.00	BR	63	62	62	97	0	00	29.18	30.06	04	CLR	NC			9.00	BR	59	58	58	97	0	00	29.24	30.12
07	VV	001			0.00	FG	64	63	63	97	0	00	29.19	30.07	07	CLR	NC			4.00	BR	61	58	59	90	0	00	29.29	30.17
10	FEW	021			10.00		76	68	71	76	7	20	29.17	30.05	10	CLR	NC			10.00		72	57	63	59	0	00	29.32	30.20
13	CLR	NC			10.00		81	65	70	58	3	22	29.13	30.01	13	CLR	NC			10.00		78	57	65	49	5	25	29.30	30.18
16	CLR	NC			10.00		83	65	71	55	7	21	29.09	29.97	16	CLR	NC			10.00		79	55	64	44	5	17	29.27	30.15
19	CLR	NC			10.00		77	67	70	71	5	21	29.08	29.96	19	CLR	NC			10.00		74	63	67	69	3	07	29.27	30.16
22	CLR	NC			9.00		73	68	70	84	0	00	29.08	29.95	22	CLR	NC			7.00		66	64	65	93	5	12	29.28	30.16
<b>SUNRISE: 0533 AUG 02</b>						<b>SUNSET: 1940</b>						<b>SUNRISE: 0538 AUG 08</b>						<b>SUNSET: 1934</b>											
01	OVC	070			9.00	-RA	71	65	67	81	3	24	29.07	29.94	01	CLR	NC			9.00		65	63	64	93	0	00	29.29	30.16
04	OVC	095			2.50	-RA BR	67	67	67	100	0	00	29.01	29.87	04	SCT	100			9.00		64	62	63	93	0	00	29.27	30.15
07	BKN	028			8.00		69	67	68	93	3	19	29.02	29.88	07	OVC	090			3.00	BR	64	64	64	100	0	00	29.31	30.19
10	BKN	048			10.00		75	67	70	76	10	25	29.05	29.91	10	BKN	090			10.00		68	65	66	90	3	18	29.30	30.19
13	BKN	070			10.00		78	67	71	69	9	26	29.05	29.92	13	CLR	NC			9.00		78	69	72	74	3	19	29.28	30.16
16	SCT	070			10.00		80	64	70	58	11	26	29.04	29.91	16	CLR	NC			9.00		84	72	76	67	6	21	29.25	30.13
19	FEW	042			10.00		75	62	67	64	9	30	29.08	29.95	19	CLR	NC			7.00		81	73	75	77	0	00	29.21	30.09
22	CLR	NC			10.00		69	59	63	71	3	31	29.14	30.02	22	CLR	NC			6.00	BR	76	72	73	87	6	20	29.23	30.11
<b>SUNRISE: 0534 AUG 03</b>						<b>SUNSET: 1939</b>						<b>SUNRISE: 0539 AUG 09</b>						<b>SUNSET: 1933</b>											
01	CLR	NC			9.00		64	60	62	87	0	00	29.15	30.03	01	CLR	NC			4.00	BR	72	71	71	97	0	00	29.24	30.11
04	CLR	NC			4.00	BR	59	58	58	97	0	00	29.13	30.01	04	CLR	NC			4.00	BR	70	68	69	93	0	00	29.27	30.14
07	VV	001			0.00	FG	60	60	60	100	0	00	29.18	30.06	07	CLR	NC			2.00	BR	69	69	69	100	0	00	29.31	30.18
10	CLR	NC			10.00		73	62	66	69	6	18	29.19	30.07	10	CLR	NC			6.00	HZ	82	72	75	72	5	21	29.31	30.18
13	FEW	041			10.00		76	60	66	58	0	00	29.16	30.04	13	CLR	NC			9.00		88	70	76	55	8	26	29.28	30.15
16	CLR	NC			10.00		79	61	68	54	8	20	29.12	30.00	16	CLR	NC			10.00		89	69	75	52	7	23	29.21	30.09
19	CLR	NC			10.00		76	64	68	67	0	00	29.11	30.00	19	CLR	NC			8.00		85	73	77	67	0	00	29.21	30.08
22	CLR	NC			7.00		67	65	66	93	3	09	29.14	30.02	22	CLR	NC			7.00		78	73	75	85	0	00	29.21	30.09
<b>SUNRISE: 0535 AUG 04</b>						<b>SUNSET: 1938</b>						<b>SUNRISE: 0540 AUG 10</b>						<b>SUNSET: 1932</b>											
01	CLR	NC			5.00	BR	67	63	65	87	0	00	29.13	30.00	01	CLR	NC			4.00	BR	74	72	73	94	0	00	29.21	30.09
04	FEW	044			6.00	BR	62	61	61	97	0	00	29.11	29.98	04	CLR	NC			2.50	BR	72	70	71	93	0	00	29.22	30.09
07	SCT	100			7.00		65	63	64	93	0	00	29.10	29.98	07	OVC	070			9.00		73	70	71	90	5	23	29.24	30.11
10	OVC	031			1.75	TSRA BR	66	64	65	93	0	00	29.15	30.04	10	CLR	NC			9.00		81	75	77	82	7	20	29.21	30.09
13	CLR	NC			10.00		70	65	67	84	5	21	29.12	30.00	13	CLR	NC			10.00		78	73	75	85	9	18	29.18	30.06
16	SCT	035			10.00	-RA	68	63	65	84	13	29	29.13	30.01	16	BKN	055			10.00		86	74	77	68	8	24	29.09	29.96
19	CLR	NC			10.00		65	63	64	93	8	17	29.01	29.88	19	OVC	060			2.00	-TSRA BR	72	70	71	93	9	33	29.14	30.02
22	CLR	NC			10.00		64	63	63	97	3	33	29.10	29.98	22	CLR	NC			6.00	BR	71	70	70	97	3	16	29.14	30.01
<b>SUNRISE: 0536 AUG 05</b>						<b>SUNSET: 1937</b>						<b>SUNRISE: 0541 AUG 11</b>						<b>SUNSET: 1930</b>											
01	CLR	NC			9.00		66	62	64	87	0	00	29.10	29.99	01	BKN	002			5.00	BR	70	69	69	97	3	20	29.11	29.99
04	BKN	110			1.00	BR	63	63	63	100	0	00	29.10	29.99	04	CLR	NC			6.00	BR	69	67	68	93	0	00	29.11	29.99
07	CLR	NC			9.00		64	63	63	97	0	00	29.12	30.00	07	OVC	110			8.00		69	68	68	97	3	18	29.13	30.01
10	OVC	018			2.00	-RA BR	65	64	64	97	3	03	29.12	30.01	10	BKN	012			10.00		76	70	72	82	6	32	29.14	30.02
13	OVC	007			6.00	HZ	68	65	66	90	0	00	29.15	30.03	13	OVC	055			10.00		81	73	75	77	7	18	29.11	29.98
16	OVC	023			10.00		71	66	68	84	0	00	29.11	30.00	16	BKN	035			10.00		84	71	75	65	3	VR	29.05	29.92
19	OVC	047			10.00		72	67	69	84	0	00	29.11	30.00	19	BKN	080			10.00		79	70	73	74	3	27	29.05	29.91
22	BKN	026			9.00		68	66	67	93	0	00	29.14	30.02	22	FEW	029			6.00	BR	73	71	72	93	0	00	29.08	29.94
<b>SUNRISE: 0536 AUG 06</b>						<b>SUNSET: 1936</b>						<b>SUNRISE: 0542 AUG 12</b>						<b>SUNSET: 1929</b>											
01	VV	001			0.25	FG	66	64	65	93	0	00	29.13	30.01	01	CLR	NC			5.00	BR	71	69	70	93	0	00	29.07	29.94
04	VV	001			0.25	FG	66	66	66	100	0	00	29.13	30.01	04	FEW	048			8.00		69	66	67	90	0	00	29.08	29.94
07	VV	001			0.00	FG	66	66	66	100	0	00	29.16	30.04	07	OVC	043			10.00		69	65	66	87	8	18	29.11	29.99
10	SCT	007			5.00	HZ	73	67	69	82	0	00	29.19	30.07	10	BKN	015			10.00		75	67	70	76	3	VR	29.13	30.01
13	BKN	039			9.00		75	62	67	64	5	30	29.17	30.05	13	OVC	048			10.00		81	67	72	63	5	VR	29.12	29.99
16	FEW	065			6.00	HZ	78	61	67	56	5	VR	29.14	30.02	16	BKN	060			10.00		82	69	73	65	5	08	29.10	29.98
19	CLR	NC			10.00		75	63	67	66	5	30	29.16	30.04	19	FEW	100			10.00		74	64	68	71	5	VR	29.12	30.00
22	SCT	060			10.00		70	60	64	71	5	34	29.21	30.09	22	CLR	NC			9.00		69	64	66	84	0	00	29.16	30.03

# OBSERVATIONS AT 3-HOURLY INTERVALS

HUNTINGTON, WV  
AUGUST 2009 KHTS

WBAN # 03860

HOUR (LST)	SKY COVER	CEILING 100's of FT.	SATELLITE		WEATHER	TEMPERATURE °F			WIND SPEED (MPH) DIRECTION Tens of Deg	PRESSURE (INCHES, HG)		HOUR (LST)	SKY COVER	CEILING 100's of FT.	SATELLITE		WEATHER	TEMPERATURE °F			WIND SPEED (MPH) DIRECTION Tens of Deg	PRESSURE (INCHES, HG)							
			Observation Time (LST)	Eff Cld Amt Oktas		VISIBILITY (MILES)	DRY BULB	DEW POINT		WET BULB	RELATIVE HUMIDITY (PCT)				STATION	SEA LEVEL		Observation Time (LST)	Eff Cld Amt Oktas	VISIBILITY (MILES)		DRY BULB	DEW POINT	WET BULB	RELATIVE HUMIDITY (PCT)	STATION	SEA LEVEL		
																												Observation Time (LST)	Eff Cld Amt Oktas
<b>SUNRISE: 0543 AUG 13</b>						<b>SUNSET: 1928</b>						<b>SUNRISE: 0548 AUG 19</b>						<b>SUNSET: 1920</b>											
01	CLR	NC			3.00	BR	65	63	64	93	0	00	29.16	30.04	01	OVC	075			10.00	72	70	71	93	5	19	29.16	30.04	
04	CLR	NC			2.00	BR	65	64	64	97	0	00	29.16	30.04	04	OVC	042			10.00	73	70	71	90	0	00	29.12	30.00	
07	VV	001			0.00	FG	65	64	64	97	0	00	29.21	30.09	07	OVC	037			9.00	72	70	71	93	3	20	29.15	30.02	
10	BKN	007			5.00	HZ	72	67	69	84	0	00	29.25	30.13	10	OVC	041			10.00	78	71	73	79	6	VR	29.16	30.03	
13	BKN	046			9.00		79	66	70	65	3	VR	29.23	30.11	13	SCT	031			10.00	83	70	74	65	0	00	29.12	29.99	
16	CLR	NC			9.00		83	66	72	57	3	VR	29.20	30.08	16	FEW	033			10.00	78	71	73	79	10	17	29.08	29.95	
19	FEW	043			8.00		78	65	70	64	0	00	29.20	30.08	19	CLR	NC			10.00	74	70	71	87	3	16	29.05	29.93	
22	CLR	NC			4.00	BR	70	67	68	90	0	00	29.24	30.12	22	CLR	NC			10.00	72	70	71	93	7	18	29.08	29.96	
<b>SUNRISE: 0543 AUG 14</b>						<b>SUNSET: 1927</b>						<b>SUNRISE: 0549 AUG 20</b>						<b>SUNSET: 1919</b>											
01	CLR	NC			2.00	BR	67	66	66	97	0	00	29.23	30.11	01	CLR	NC			10.00	71	69	70	93	6	20	29.07	29.93	
04	VV	001			0.75	BR	65	64	64	97	0	00	29.24	30.11	04	CLR	NC			10.00	70	68	69	93	3	20	29.04	29.90	
07	VV	001			0.00	FG	65	64	64	97	0	00	29.27	30.15	07	BKN	065			7.00	-RA	71	69	70	93	7	19	29.05	29.93
10	CLR	NC			3.00	HZ	76	69	71	79	0	00	29.29	30.16	10	FEW	021			10.00	75	71	72	87	10	19	29.07	29.93	
13	SCT	042			6.00	HZ	82	67	72	61	0	00	29.26	30.14	13	SCT	034			10.00	84	71	75	65	13	21	29.01	29.87	
16	CLR	NC			7.00		85	67	73	55	3	26	29.23	30.11	16	OVC	075			10.00	85	72	76	65	9	19	28.94	29.80	
19	CLR	NC			8.00		81	65	70	58	3	30	29.22	30.10	19	CLR	NC			10.00	81	71	74	72	7	21	28.96	29.82	
22	CLR	NC			4.00	BR	73	69	70	87	0	00	29.25	30.12	22	CLR	NC			10.00	78	68	71	71	10	21	29.02	29.88	
<b>SUNRISE: 0544 AUG 15</b>						<b>SUNSET: 1926</b>						<b>SUNRISE: 0550 AUG 21</b>						<b>SUNSET: 1918</b>											
01	CLR	NC			2.00	BR	68	68	68	100	0	00	29.23	30.10	01	BKN	100			10.00	76	68	71	76	7	21	29.01	29.87	
04	VV	001			0.50	FG	67	66	66	97	0	00	29.22	30.10	04	OVC	120			10.00	73	69	70	87	6	21	28.99	29.85	
07	VV	001			0.00	FG	67	66	66	97	0	00	29.27	30.15	07	OVC	090			10.00	70	66	67	87	5	21	29.02	29.89	
10	CLR	NC			9.00		79	70	73	74	5	21	29.29	30.17	10	BKN	024			10.00	75	68	70	79	9	20	29.05	29.92	
13	FEW	033			10.00		86	70	75	59	0	00	29.26	30.14	13	FEW	047			10.00	81	65	70	58	10	23	29.02	29.88	
16	FEW	046			9.00		85	69	74	59	0	00	29.21	30.09	16	CLR	NC			10.00	82	59	67	46	9	28	28.98	29.84	
19	CLR	NC			9.00		83	69	73	63	0	00	29.22	30.09	19	CLR	NC			10.00	77	60	66	56	3	25	28.97	29.83	
22	CLR	NC			6.00	BR	74	71	72	90	0	00	29.26	30.14	22	CLR	NC			10.00	67	63	65	87	0	00	29.01	29.88	
<b>SUNRISE: 0545 AUG 16</b>						<b>SUNSET: 1924</b>						<b>SUNRISE: 0551 AUG 22</b>						<b>SUNSET: 1916</b>											
01	FEW	001			1.25	BR	71	69	70	93	0	00	29.25	30.12	01	BKN	110			10.00	66	63	64	90	0	00	29.00	29.86	
04	CLR	NC			0.75	BR	68	67	67	97	0	00	29.25	30.12	04	OVC	090			8.00	66	64	65	93	0	00	28.99	29.85	
07	CLR	NC			3.00	BR	69	67	68	93	0	00	29.29	30.16	07	CLR	NC			1.00	BR	63	63	63	100	3	19	29.01	29.88
10	CLR	NC			10.00		80	69	73	69	5	20	29.31	30.18	10	CLR	NC			10.00	74	60	65	62	5	22	29.03	29.90	
13	CLR	NC			10.00		87	66	73	50	6	23	29.28	30.15	13	SCT	055			10.00	76	58	65	54	6	VR	29.01	29.88	
16	CLR	NC			10.00		88	67	74	50	6	12	29.23	30.11	16	BKN	090			10.00	73	60	65	64	9	31	28.99	29.86	
19	CLR	NC			10.00		77	70	72	79	0	00	29.22	30.10	19	BKN	090			10.00	68	59	63	73	5	31	29.02	29.89	
22	CLR	NC			6.00	BR	73	72	72	97	0	00	29.26	30.14	22	CLR	NC			10.00	64	59	61	84	5	33	29.07	29.94	
<b>SUNRISE: 0546 AUG 17</b>						<b>SUNSET: 1923</b>						<b>SUNRISE: 0551 AUG 23</b>						<b>SUNSET: 1915</b>											
01	VV	001			0.75	BR	70	69	69	97	0	00	29.26	30.13	01	BKN	046			10.00	62	58	60	87	3	32	29.07	29.94	
04	CLR	NC			5.00	BR	68	67	67	97	0	00	29.25	30.13	04	SCT	070			10.00	61	58	59	90	3	35	29.07	29.94	
07	CLR	NC			5.00	BR	69	68	68	97	0	00	29.28	30.16	07	BKN	019			10.00	62	59	60	90	3	36	29.10	29.99	
10	BKN	060			10.00		78	70	73	77	6	24	29.32	30.20	10	BKN	015			10.00	67	59	62	76	3	VR	29.14	30.02	
13	FEW	035			10.00		87	71	76	59	9	21	29.28	30.16	13	BKN	060			10.00	72	57	63	59	6	03	29.13	30.02	
16	FEW	036			10.00		77	74	75	91	0	00	29.24	30.11	16	CLR	NC			10.00	73	55	62	53	6	35	29.13	30.01	
19	CLR	NC			10.00		76	72	73	87	3	17	29.22	30.09	19	CLR	NC			10.00	69	57	62	66	6	01	29.14	30.02	
22	CLR	NC			8.00		74	73	73	97	0	00	29.24	30.12	22	CLR	NC			10.00	64	57	60	78	3	01	29.18	30.06	
<b>SUNRISE: 0547 AUG 18</b>						<b>SUNSET: 1922</b>						<b>SUNRISE: 0552 AUG 24</b>						<b>SUNSET: 1913</b>											
01	CLR	NC			10.00		74	71	72	90	5	19	29.24	30.11	01	CLR	NC			10.00	61	56	58	84	0	00	29.19	30.08	
04	CLR	NC			9.00		72	70	71	93	3	11	29.21	30.08	04	CLR	NC			10.00	57	55	56	93	0	00	29.20	30.09	
07	OVC	041			1.50	RA BR	72	70	71	93	6	25	29.26	30.14	07	SCT	003			4.00	BR	58	57	57	97	0	00	29.24	30.13
10	OVC	050			8.00	-RA	73	71	72	93	8	19	29.26	30.14	10	SCT	027			10.00	71	59	64	66	3	VR	29.26	30.15	
13	BKN	050			10.00		80	70	73	72	7	22	29.21	30.08	13	FEW	040			10.00	76	56	64	50	0	00	29.25	30.13	
16	FEW	055			10.00		82	72	75	72	10	22	29.16	30.03	16	SCT	055			10.00	78	58	66	50	5	05	29.25	30.13	
19	OVC	110			10.00		78	70	73	77	8	22	29.15	30.03	19	CLR	NC			10.00	72	60	65	66	5	36	29.22	30.11	
22	OVC	090			10.00		72	70	71	93	5	20	29.17	30.05	22	CLR	NC			9.00	65	60	62	84	0	00	29.26	30.14	

# OBSERVATIONS AT 3-HOURLY INTERVALS

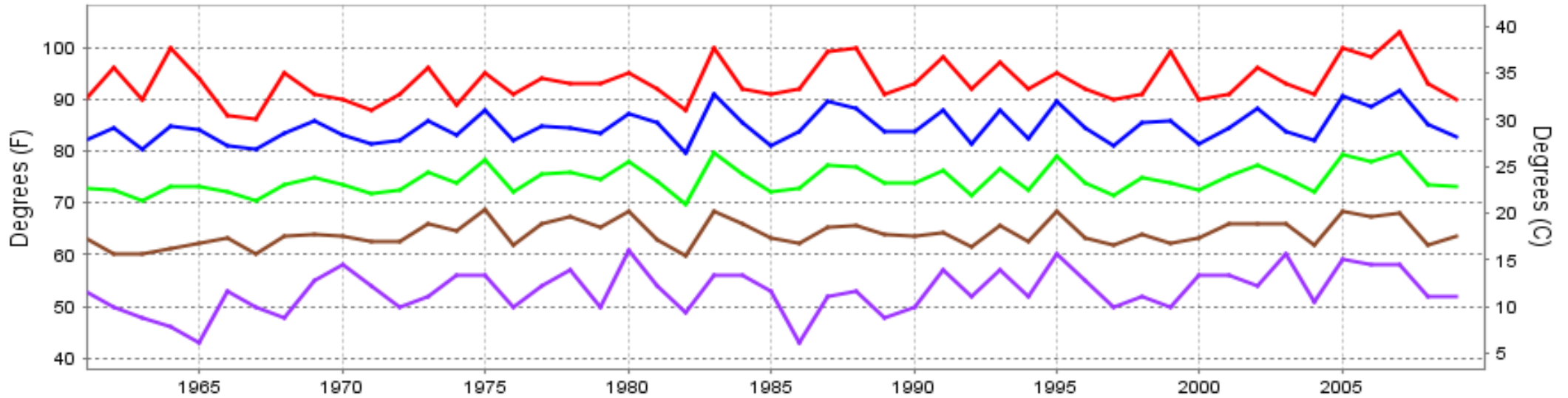
HUNTINGTON, WV  
AUGUST 2009 KHTS

WBAN # 03860

HOUR (LST)	SKY COVER	CEILING 100's of FT.	SATELLITE		WEATHER	TEMPERATURE °F			WIND SPEED (MPH) DIRECTION Tens of Deg	PRESSURE (INCHES, HG)																			
			Observation Time (LST)	Eff Cld Amt Oktas		VISIBILITY (MILES)	DRY BULB	DEW POINT		WET BULB	RELATIVE HUMIDITY (PCT)	STATION	SEA LEVEL																
<b>SUNRISE: 0553</b>						<b>AUG 25</b>						<b>SUNSET: 1912</b>																	
01	CLR	NC			4.00	BR	61	59	60	93	0	00	29.25	30.13	01	CLR	NC			10.00		57	51	54	80	5	02	29.25	30.13
04	FEW	002			0.25	FG	60	60	60	100	0	00	29.24	30.12	04	CLR	NC			10.00		54	49	51	83	3	01	29.25	30.13
07	VV	001			0.00	FG	60	59	59	97	0	00	29.27	30.15	07	CLR	NC			10.00		54	50	52	86	5	02	29.28	30.16
10	CLR	NC			9.00		74	65	68	74	0	00	29.27	30.15	10	CLR	NC			10.00		66	54	59	65	3	VR	29.30	30.19
13	FEW	029			6.00	HZ	82	68	73	63	0	00	29.25	30.12	13	OVC	049			10.00		71	52	60	51	7	VR	29.29	30.17
16	CLR	NC			6.00	HZ	83	64	71	53	0	00	29.19	30.07	16	SCT	049			10.00		72	50	59	46	8	03	29.25	30.14
19	CLR	NC			10.00		79	67	71	67	0	00	29.18	30.06	19	CLR	NC			10.00		65	51	57	61	5	02	29.26	30.15
22	CLR	NC			5.00	BR	70	68	69	93	0	00	29.20	30.08	22	CLR	NC			10.00		60	50	55	70	3	05	29.30	30.18
<b>SUNRISE: 0554</b>						<b>AUG 26</b>						<b>SUNSET: 1911</b>																	
01	SCT	028			3.00	BR	67	66	66	97	0	00	29.20	30.08	01	CLR	NC			10.00		57	51	54	80	5	02	29.25	30.13
04	FEW	006			2.50	BR	65	64	64	97	0	00	29.20	30.08	04	CLR	NC			10.00		54	49	51	83	3	01	29.25	30.13
07	VV	001			1.00	BR	65	65	65	100	0	00	29.23	30.11	07	CLR	NC			10.00		54	50	52	86	5	02	29.28	30.16
10	CLR	NC			9.00		78	69	72	74	6	24	29.25	30.12	10	CLR	NC			10.00		66	54	59	65	3	VR	29.30	30.19
13	BKN	050			10.00		84	67	73	57	5	VR	29.22	30.09	13	OVC	049			10.00		71	52	60	51	7	VR	29.29	30.17
16	BKN	045			10.00		85	65	72	51	0	00	29.18	30.06	16	SCT	049			10.00		72	50	59	46	8	03	29.25	30.14
19	FEW	043			6.00	HZ	79	72	74	79	0	00	29.18	30.06	19	CLR	NC			10.00		65	51	57	61	5	02	29.26	30.15
22	CLR	NC			4.00	BR	72	70	71	93	0	00	29.20	30.08	22	CLR	NC			10.00		60	50	55	70	3	05	29.30	30.18
<b>SUNRISE: 0555</b>						<b>AUG 27</b>						<b>SUNSET: 1909</b>																	
01	BKN	029			0.50	FG	69	69	69	100	0	00	29.19	30.06	01	CLR	NC			10.00		57	51	54	80	5	02	29.25	30.13
04	SCT	080			0.50	FG	66	66	66	100	0	00	29.17	30.05	04	CLR	NC			10.00		54	49	51	83	3	01	29.25	30.13
07	VV	001			0.75	BR	67	66	66	97	0	00	29.21	30.09	07	CLR	NC			10.00		54	50	52	86	5	02	29.28	30.16
10	CLR	NC			9.00		79	69	72	72	0	00	29.21	30.08	10	CLR	NC			10.00		66	54	59	65	3	VR	29.30	30.19
13	BKN	090			10.00		84	65	71	53	0	00	29.17	30.04	13	OVC	049			10.00		71	52	60	51	7	VR	29.29	30.17
16	FEW	100			10.00		83	67	72	59	0	00	29.14	30.01	16	SCT	049			10.00		72	50	59	46	8	03	29.25	30.14
19	CLR	NC			9.00		81	69	73	67	0	00	29.14	30.01	19	CLR	NC			10.00		65	51	57	61	5	02	29.26	30.15
22	CLR	NC			6.00	HZ	75	70	72	85	0	00	29.14	30.01	22	CLR	NC			10.00		60	50	55	70	3	05	29.30	30.18
<b>SUNRISE: 0556</b>						<b>AUG 28</b>						<b>SUNSET: 1908</b>																	
01	CLR	NC			4.00	BR	72	70	71	93	0	00	29.12	29.99	01	CLR	NC			10.00		57	51	54	80	5	02	29.25	30.13
04	SCT	110			4.00	BR	71	69	70	93	5	19	29.11	29.98	04	CLR	NC			10.00		54	49	51	83	3	01	29.25	30.13
07	BKN	110			5.00	-RA BR	71	68	69	90	3	19	29.11	29.98	07	CLR	NC			10.00		54	50	52	86	5	02	29.28	30.16
10	CLR	NC			8.00		73	68	70	84	6	20	29.12	30.00	10	CLR	NC			10.00		66	54	59	65	3	VR	29.30	30.19
13	OVC	150			10.00		78	68	71	71	6	22	29.09	29.96	13	OVC	049			10.00		71	52	60	51	7	VR	29.29	30.17
16	BKN	120			10.00		78	68	71	71	7	17	29.03	29.89	16	SCT	049			10.00		72	50	59	46	8	03	29.25	30.14
19	CLR	NC			10.00		74	67	69	79	3	17	29.00	29.87	19	CLR	NC			10.00		65	51	57	61	5	02	29.26	30.15
22	OVC	110			10.00		71	68	69	90	3	18	29.00	29.87	22	OVC	110			10.00		60	50	55	70	3	05	29.30	30.18
<b>SUNRISE: 0557</b>						<b>AUG 29</b>						<b>SUNSET: 1906</b>																	
01	CLR	NC			10.00		70	68	69	93	5	21	28.96	29.83	01	CLR	NC			10.00		57	51	54	80	5	02	29.25	30.13
04	CLR	NC			10.00		68	66	67	93	3	22	28.93	29.80	04	CLR	NC			10.00		54	49	51	83	3	01	29.25	30.13
07	BKN	060			10.00		68	66	67	93	5	24	28.94	29.81	07	CLR	NC			10.00		54	50	52	86	5	02	29.28	30.16
10	OVC	023			7.00		71	66	68	84	7	23	28.96	29.83	10	CLR	NC			10.00		66	54	59	65	3	VR	29.30	30.19
13	SCT	028			10.00		79	63	69	58	10	25	28.94	29.80	13	OVC	049			10.00		71	52	60	51	7	VR	29.29	30.17
16	FEW	050			10.00		80	59	67	49	8	25	28.93	29.79	16	SCT	049			10.00		72	50	59	46	8	03	29.25	30.14
19	CLR	NC			10.00		73	60	65	64	3	27	28.96	29.83	19	CLR	NC			10.00		65	51	57	61	5	02	29.26	30.15
22	FEW	055			9.00		66	62	64	87	5	20	29.01	29.88	22	CLR	NC			10.00		60	50	55	70	3	05	29.30	30.18
<b>SUNRISE: 0558</b>						<b>AUG 30</b>						<b>SUNSET: 1905</b>																	
01	FEW	048			10.00		65	60	62	84	0	00	29.04	29.91	01	CLR	NC			10.00		57	51	54	80	5	02	29.25	30.13
04	FEW	050			10.00		61	58	59	90	0	00	29.07	29.94	04	CLR	NC			10.00		54	49	51	83	3	01	29.25	30.13
07	FEW	020			6.00	BR	58	57	57	97	0	00	29.11	29.99	07	CLR	NC			10.00		54	50	52	86	5	02	29.28	30.16
10	CLR	NC			10.00		69	56	61	63	7	32	29.15	30.03	10	CLR	NC			10.00		66	54	59	65	3	VR	29.30	30.19
13	SCT	045			10.00		73	52	61	48	7	VR	29.14	30.02	13	OVC	049			10.00		71	52	60	51	7	VR	29.29	30.17
16	BKN	049			10.00		73	52	61	48	5	31	29.14	30.02	16	SCT	049			10.00		72	50	59	46	8	03	29.25	30.14
19	FEW	055			10.00		67	52	58	59	5	36	29.17	30.06	19	CLR	NC			10.00		65	51	57	61	5	02	29.26	30.15
22	CLR	NC			10.00		61	53	57	75	5	01	29.23	30.11	22	CLR	NC			10.00		60	50	55	70	3	05	29.30	30.18

HOUR (LST)	SKY COVER	CEILING 100's of FT.	SATELLITE		WEATHER	TEMPERATURE °F			WIND SPEED (MPH) DIRECTION Tens of Deg	PRESSURE (INCHES, HG)																			
			Observation Time (LST)	Eff Cld Amt Oktas		VISIBILITY (MILES)	DRY BULB	DEW POINT		WET BULB	RELATIVE HUMIDITY (PCT)	STATION	SEA LEVEL																
<b>SUNRISE: 0558</b>						<b>AUG 31</b>						<b>SUNSET: 1903</b>																	
01	CLR	NC			10.00		57	51	54	80	5	02	29.25	30.13	01	CLR	NC			10.00		54	49	51	83	3	01	29.25	30.13
04	CLR	NC			10.00		54	49	51	83	3	01	29.25	30.13	04	CLR	NC			10.00		54	50	52	86	5	02	29.28	30.16
07	CLR	NC			10.00		54	50	52	86	5	02	29.28	30.16	07	CLR	NC			10.00		66	54	59	65	3	VR	29.30	30.19
10	CLR	NC			10.00		66	54	59	65	3	VR	29.30	30.19	1														

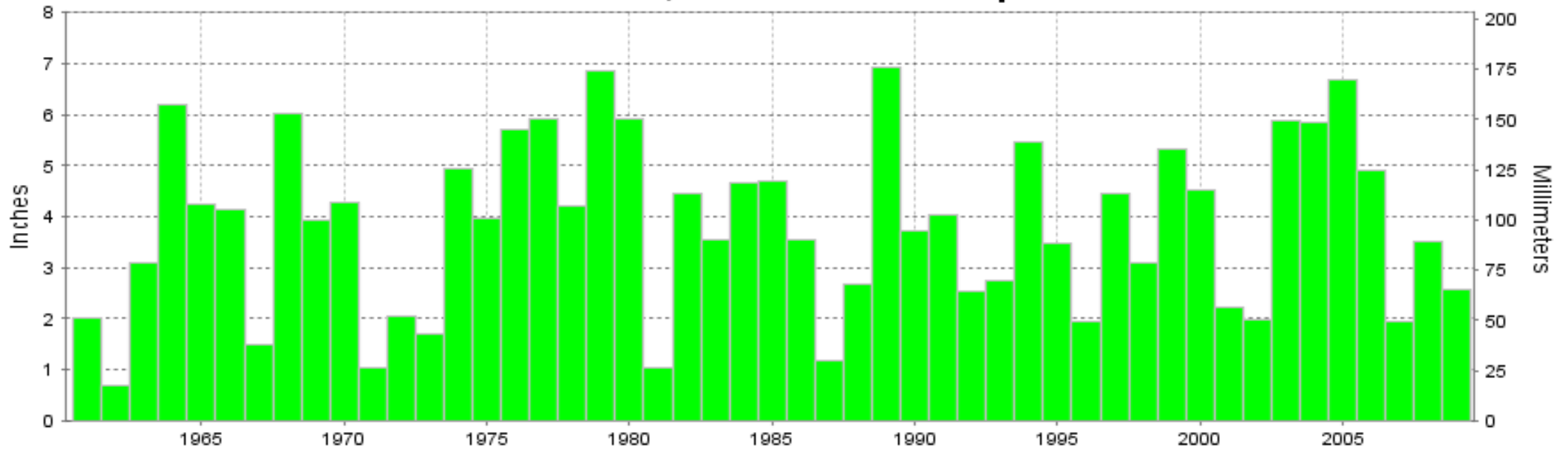
## HUNTINGTON, WV AUGUST Temperatures



— Extreme Max — Mean Max — Mean — Mean Min — Extreme Min

Long-Term (1961-2009) Mean: 74.4  
1971-2000 Normal: 73.9

## HUNTINGTON, WV AUGUST Precipitation



Long-Term (1961-2009) Mean Monthly Total: 3.84

1971-2000 Normal: 3.88



AUGUST 2009  
HUNTINGTON, WV

# LOCAL CLIMATOLOGICAL DATA

## NOAA, National Climatic Data Center

*I certify that this is an official publication of the National Oceanic and Atmospheric Administration (NOAA). It is compiled using information from weather observing sites operated by NOAA-National Weather Service / Department Of Transportation-Federal Aviation Administration and received at the National Climatic Data Center (NCDC), Asheville, North Carolina 28801.*

**DIRECTOR**

NCDC now offers an annual online subscription for the **Edited Local Climatological Data Publication**. When you purchase this subscription service, you will have **immediate online access** to all previous publications back to July 1996 and all publications thereafter until the expiration of the subscription. Your subscription is valid for one year after purchase. **The total cost for online delivery (including back issues) is significantly less than the cost for offline delivery.** To order this and other subscriptions online with your credit card, go to: **www.ncdc.noaa.gov** and choose subscriptions.

We welcome your questions or comments, please contact us at:  
Toll Free Number (866) 742-3322 (voice)  
Fax Number : (304) 726-4409  
TDD : (828) 271-4010  
or Email : [ncdc.info@noaa.gov](mailto:ncdc.info@noaa.gov)  
Local Climatological Data is available at [www.ncdc.noaa.gov](http://www.ncdc.noaa.gov)

NCDC Subscription Services Center  
310 State Route 956 Building 300  
Rocket Center, WV 26726  
OFFICIAL BUSINESS, PENALTY FOR PRIVATE USE \$300

FIRST CLASS  
POSTAGE AND FEES PAID  
NOAA  
PERMIT G-19

For address correction, please return a photocopy of this page to Subscription Services indicating changes