



SEPTEMBER 2009 LOCAL CLIMATOLOGICAL DATA

NOAA, National Climatic Data Center

HUNTINGTON, WV
TRI-STATE/M.J.FERGUSON FIELD AIRPORT (KHTS)
Lat:38° 22'N Long: 82° 33'W Elev (Ground) 824 Feet
Time Zone : EASTERN WBAN: 03860 ISSN#: 0198-5655



Date 1	Temperature °F						Deg Days BASE 65°		WEATHER 10	SNOW/ICE ON GND(IN)		PRECIPITATION ON GND(IN)		PRESSURE (INCHES OF HG)		WIND SPEED = MPH DIR = TENS OF DEGREES								Date 24
	MAXIMUM 2	MINIMUM 3	AVERAGE 4	DEP FROM NORMAL 5	AVERAGE DEW PT 6	AVERAGE WET BULB 7	HEATING 8	COOLING 9		0700 LST 11	1300 LST 12	2400 LST 13	2400 LST 14	AVERAGE STATION 15	AVERAGE SEA LEVEL 16	RESULTANT SPEED 17	RES DIR 18	AVERAGE SPEED 19	MAXIMUM					
																			3-SEC 20		2-MIN 22			
01	79	53	66	-5	54	58	0	1		0		0.0	0.00	29.31	30.20	3.3	04	3.8	14	06	9	06	01	
02	81	56	69	-2	56	61	0	4	BR	0		0.0	0.00	29.28	30.17	2.0	08	2.9	12	06	9	07	02	
03	82	54	68	-3	54	60	0	3	BR	0		0.0	0.00	29.21	30.09	1.2	03	1.7	10	01	8	02	03	
04	83	55	69	-1	56	61	0	4	RA FG+ FG BR HZ	0		0.0	T	29.20	30.09	1.3	35	1.7	15	29	9	35	04	
05	83	57	70	0	57	62	0	5	FG+ BR HZ	0		0.0	0.00	29.27	30.17	1.5	02	2.0	12	04	8	04	05	
06	82	60	71	1	63	65	0	6	RA BR HZ	0		0.0	0.04	29.28	30.17	1.0	15	1.4	20	15	10	23	06	
07	71	64	68	-2	65	65	0	3	RA FG+ BR	0		0.0	0.16	29.22	30.17	0.4	18	2.1			8	13	07	
08	79	61	70	1	64	65	0	5	FG+ FG BR HZ	0		0.0	0.00	29.13	30.02	0.4	08	0.7			6	06	08	
09	80	62	71	2	64	65	0	6	TS GR RA FG+ FG BR HZ	0		T	0.27	29.16	30.07	1.1	06	2.1	26	05	20	04	09	
10	79	61	70	1	60	63	0	5	BR	0		0.0	0.00	29.27	30.16	4.3	10	4.8	21	12	12	13	10	
11	79	56	68	-1	59	62	0	3	BR	0		0.0	0.00	29.23	30.11	0.8	05	1.2	16	04	8	35	11	
12	76	54	65	-3	56	60	0	0	BR	0		0.0	0.00	29.18	30.06	2.8	03	3.5	14	04	10	04	12	
13	78	55	67	-1	58	61	0	2	FG+ FG BR	0		0.0	0.00	29.18	30.06	0.7	03	1.6	13	01	9	01	13	
14	83	53	68	0	58	61	0	3	FG+ FG BR	0		0.0	0.00	29.16	30.04	0.4	04	1.1	14	03	9	04	14	
15	84	56	70	3	60	63	0	5	BR	0		0.0	0.00	29.13	30.01	0.1	03	0.4			7	05	15	
16	82	61	72	5	60	64	0	7	FG+ FG BR	0		0.0	0.00	29.15	30.04	4.5	03	4.6	23	08	12	36	16	
17	81	57	69	2	60	63	0	4	BR	0		0.0	0.00	29.18	30.06	3.3	02	3.5	12	35	8	36	17	
18	79	62	71	5	64	66	0	6	RA FG BR	0		0.0	0.01	29.18	30.08	1.0	01	1.4	10	04	8	02	18	
19	81	58	70	4	56	62	0	5		0		0.0	0.00	29.26	30.14	4.1	04	4.5	13	05	9	02	19	
20	76	62	69	4	64	66	0	4	RA BR	0		0.0	0.14	29.23	30.11	2.8	11	3.4	23	34	10	12	20	
21	79	67	73	8	65	67	0	8	RA	0		0.0	0.01	29.21	30.09	4.9	14	5.1	18	17	14	18	21	
22	86*	66	76*	11	65	68	0	11	BR	0		0.0	0.00	29.23	30.11	3.4	16	3.9	15	23	12	17	22	
23	83	65	74	10	68	70	0	9	RA BR HZ	0		0.0	T	29.24	30.12	1.0	21	1.9	13	24	10	35	23	
24	81	66	74	10	68	69	0	9	RA FG+ BR HZ	0		0.0	0.81	29.22	30.10	2.2	01	3.0	10	01	9	36	24	
25	69	64	67	3	65	66	0	2	RA BR	0		0.0	0.50	29.22	30.10	3.2	05	3.4	14	06	10	05	25	
26	68	62	65	1	63	63	0	0	RA BR	0		0.0	1.29	29.08	29.94	3.7	14	5.3	22	14	16	12	26	
27	70	57	64	0	56	59	1	0	RA	0		0.0	T	28.87	29.74	5.8	24	6.8	21	25	15	25	27	
28	69	54	62	-1	46	54	3	0	RA	0		0.0	T	28.77	29.66	10.2	24	11.5	32*	23	24*	24	28	
29	61	49	55	-7	44	49	10	0		0		0.0	0.00	28.98	29.90	8.7	25	9.3	23	23	17	25	29	
30	58	45*	52*	-10	46	49	13	0	RA	0		0.0	T	29.16	30.07	3.1	28	4.4	15	25	10	25	30	

77.4	58.4	67.9	☼	59.1	62.2	0.9	4.0	< MONTHLY AVERAGES TOTALS >				T	3.23	29.18	30.06	0.2	07	3.4	< MONTHLY AVERAGES			
0.4	1.6	1.0		-----DEPARTURE FROM NORMAL ----->								0.43	SUNSHINE, CLOUD, & VISIBILITY TABLES ON PAGE 3									
DEGREE DAYS								GREATEST 24-HR PRECIPITATION : 1.67 DATE : 25-26				SEA LEVEL PRESSURE				DATE TIME						
MONTHLY				SEASON TO DATE				GREATEST 24-HR SNOWFALL : T DATE : 09				MAXIMUM : 30.25 01 1011										
TOTAL DEPARTURE				TOTAL DEPARTURE				GREATEST SNOW DEPTH : 0 DATE :				MINIMUM : 29.52 28 0613										
HEATING :		27 -28		30		-29		NUMBER OF -> DAYS WITH		MAXIMUM TEMP >= 90 : 0		MINIMUM TEMP <= 32 : 0		PRECIPITATION >= 0.01 INCH: 9								
COOLING :		120 -8		932		-158				MAXIMUM TEMP <= 32 : 0		MINIMUM TEMP <= 0 : 0		PRECIPITATION >= 0.10 INCH: 6								
										THUNDERSTORMS : 1		HEAVY FOG : 9		SNOWFALL >= 1.0 INCH : 0								

SEPTEMBER 2009
 HUNTINGTON, WV

HOURLY PRECIPITATION

(WATER EQUIVALENT IN INCHES)

HUNTINGTON, WV (KHTS)
 SEPTEMBER 2009

WBAN # 03860

Date	FOR HOUR (LST) ENDING AT												Date	FOR HOUR (LST) ENDING AT												Date	Sum of Hourly Data	2400 LST Water Equiv.
	1	2	3	4	5	6	7	8	9	10	11	12		13	14	15	16	17	18	19	20	21	22	23	24			
01													01												01	0.00	0.00	
02													02												02	0.00	0.00	
03													03												03	0.00	0.00	
04													04												04	T	T	
05													05												05	0.00	0.00	
06													06												06	0.04	0.04	
07	T				T								07		0.10	T		T	T	0.01	0.05		T	0.02	0.02	T	0.16	0.16
08													08												08	0.00	0.00	
09									0.01				09		T	0.15	0.10	0.01			T	T			09	0.27	0.27	
10													10												10	0.00	0.00	
11													11												11	0.00	0.00	
12													12												12	0.00	0.00	
13													13												13	0.00	0.00	
14													14												14	0.00	0.00	
15													15												15	0.00	0.00	
16													16												16	0.00	0.00	
17													17												17	0.00	0.00	
18											0.01		18												18	0.01	0.01	
19													19												19	0.00	0.00	
20													20	0.06	0.01									T	20	0.14	0.14	
21	T	T	T										21				T								21	0.01	0.01	
22													22												22	0.00	0.00	
23													23												23	T	T	
24													24												24	0.81	0.81	
25	T	T	0.02	T	T								25		0.01	0.13	0.22	0.07	0.01	0.01		T	0.08	0.36	0.33	0.02	0.50	0.50
26	0.06	0.12	0.05	T	T								26	0.01	0.02	0.02	0.01	0.01	0.05	T					26	1.29	1.29	
27		T		T	T								27												27	T	T	
28													28												28	T	T	
29													29												29	0.00	0.00	
30													30		T										30	T	T	

* Indicates sum of Hourly and Daily disagree.

MAXIMUM SHORT DURATION PRECIPITATION (See Note)

Time Period (Minutes)	5	10	15	20	30	45	60	80	100	120	150	180
Precipitation (Inches)	0.11	0.16	0.22	0.28	0.38	0.50	0.55	0.63	0.68	0.71	0.78	0.81
Ending Date	26	24	24	24	24	24	24	24	24	24	24	26
Ending Time (Hr/Min)	0915	2153	2155	2201	2207	2218	2231	2241	2304	2249	2304	1137

Note : The hourly and daily precipitation totals are printed in the last 2 columns and hi-lighted in red when they disagree. NWS does not edit ASOS hourly values but may edit daily and monthly totals. Hourly, daily, and monthly totals are printed as reported by the ASOS site.

Date and time are not entered for TRACE amounts.

REFERENCE NOTES & SUPPLEMENTAL SUMMARIES

* = Extreme for the month (last occurrence if more than one).

T = Trace precipitation amount.

+ = also occurs on earlier date.

FG+ = Heavy fog, visibility .25 miles or less.

BLANK entries denote missing or unreported data.

Resultant wind is the vector sum of the wind speeds and directions divided by the number of observations.

Wind direction is recorded in tens of degrees (2 digits) clockwise from true north. '00' = calm, 'VR' = variable.

Precipitation is for the 24-hour period ending at the time indicated in the column heading.

Water Equivalent of snow on the ground is reported only when the depth is 2 or more inches.

NORMALS ARE FOR THE YEARS 1971-2000

WEATHER NOTATIONS

QUALIFIER	WEATHER PHENOMENA		
DESCRIPTOR	PRECIPITATION	OBSCURATION	OTHER
BC Patches	DZ Drizzle	BR Mist	DS Duststorm
BL Blowing	GR Hail	DU Widespread Dust	FC Funnel Cloud
DR Low Drifting	GS Small Hail and/or Snow Pellets	FG Fog	+FC Tornado Waterspout
FZ Freezing	IC Ice Crystals	FU Smoke	PO Well-Developed Dust/Sand Whirls
MI Shallow	PL Ice Pellets	HZ Haze	
PR Partial	RA Rain	PY Spray	SQ Squalls
SH Shower(s)	SG Snow Grains	SA Sand	SS Sandstorm
TS Thunderstorm	SN Snow	VA Volcanic Ash	GL Glaze
VC In the Vicinity	UP Unkown Precipitation		

Intensity (as indicated on pages 4 to 6):
'+' = Heavy '' = Moderate '-' = Light

HUNTINGTON, WV SEPTEMBER 2009

Ceilometer (30-second) data are used to derive cloudiness at or below 12,000 feet. This cloudiness is the mean cloud cover detected during sunrise to sunset (SR-SS), or midnight to midnight (MN-MN).

Satellite data are used to derive cloudiness above 12,000 feet. Effective Cloud Amount is based on the cloud cover and the transparency of the clouds within the satellite field of view (approx. 31x31 miles).

Sky Condition is based on the sum (not to exceed 8) of the sunrise to sunset cloud cover below and above 12,000 feet. Both ceilometer and satellite data must be present to compute Sky Condition. Clear = 0-2 oktas, Partly Cloudy = 3-6 oktas, Cloudy = 7-8 oktas.

A Heating (Cooling) Degree Day is the difference between the average daily temperature and 65 degrees F. The HDD season begins July 1, the CDD season begins January 1.

Dew Point is the temperature to which the air must be cooled to achieve 100% relative humidity. Wet Bulb is the temperature the air would have if cooled to saturation at constant pressure by evaporation of water into it.

Snow Depth, Snowfall, and Sunshine data may come from nearby sites that the National Weather Service deems Climatologically representative of this site.

ADDITIONAL NOTES:

Station Augmentation-HUNTINGTON SWG PL COOP
Lat/Lon:38.41833/-82.51 Elevation:520
Distance:3 MI Dir:N
Augmented Elements:Temp, Precip, Snow
Equipment:MMTS, SRG, Snowboard

Date	SUNSHINE		CLOUDINESS (OKTAS)				VISIBILITY (MILES)		RESERVED
	TOTAL MINUTES	PERCENT POSSIBLE	SR-SS		MN-MN		MINIMUM	MAXIMUM	
			Sky Cover	Satellite	Sky Cover	Satellite			
01							10.00	10.00	
02							5.00	10.00	
03							3.00	10.00	
04							0.00	10.00	
05							0.25	10.00	
06							1.50	10.00	
07							0.25	10.00	
08							0.25	10.00	
09							0.00	10.00	
10							1.00	10.00	
11							2.50	10.00	
12							4.00	10.00	
13							0.00	10.00	
14							0.00	10.00	
15							1.00	10.00	
16							0.25	10.00	
17							5.00	10.00	
18							0.50	10.00	
19							10.00	10.00	
20							3.00	10.00	
21							10.00	10.00	
22							6.00	10.00	
23							5.00	10.00	
24							0.00	10.00	
25							0.75	8.00	
26							1.00	10.00	
27							10.00	10.00	
28							10.00	10.00	
29							10.00	10.00	
30							10.00	10.00	
MONTHLY AVGS							3.67	9.93	
SUNSHINE (Minutes)									
Total : 0					Possible : 22350				
Percent Possible : 0									
NUMBER OF DAYS WITH : SKY CONDITION									
Clear		Partly CLDY			Cloudy			Missing	
MINIMUM VISIBILITY (MILES)									
<= .25			<= 3.0				>= 7.0		
9			18				7		

OBSERVATIONS AT 3-HOURLY INTERVALS

HUNTINGTON, WV SEPTEMBER 2009 KHTS

WBAN # 03860

HOUR (LST)	SKY COVER	CEILING 100's of FT.	SATELLITE		WEATHER	TEMPERATURE °F			WIND SPEED (MPH) DIRECTION Tens of Deg	PRESSURE (INCHES, HG)		HOUR (LST)	SKY COVER	CEILING 100's of FT.	SATELLITE		WEATHER	TEMPERATURE °F			WIND SPEED (MPH) DIRECTION Tens of Deg	PRESSURE (INCHES, HG)						
			Observation Time (LST)	Eff Cld Amt Oktas		VISIBILITY (MILES)	DRY BULB	DEW POINT		WET BULB	RELATIVE HUMIDITY (PCT)				STATION	SEA LEVEL		Observation Time (LST)	Eff Cld Amt Oktas	VISIBILITY (MILES)		DRY BULB	DEW POINT	WET BULB	RELATIVE HUMIDITY (PCT)	STATION	SEA LEVEL	
																												WEATHER
SUNRISE: 0559 SEP 01						SUNSET: 1902						SUNRISE: 0605 SEP 07						SUNSET: 1851										
01	CLR	NC			10.00	56	52	54	87	0	00	29.31	30.19	01	OVC	070			2.00	BR	67	65	66	93	6	13	29.26	30.14
04	SCT	050			10.00	54	50	52	86	3	02	29.32	30.20	04	BKN	110			4.00	BR	66	65	65	97	0	00	29.23	30.11
07	BKN	060			10.00	54	49	51	83	6	05	29.34	30.22	07	BKN	100			4.00	BR	64	64	64	100	0	00	29.22	30.10
10	SCT	060			10.00	65	52	58	63	5	02	29.36	30.25	10	OVC	070			2.50	BR	65	64	64	97	0	00	29.22	30.10
13	CLR	NC			10.00	75	55	63	50	0	00	29.34	30.22	13	OVC	012			5.00	BR	67	65	66	93	3	32	29.25	30.13
16	SCT	040			10.00	78	57	65	49	6	04	29.29	30.18	16	OVC	095			9.00	BR	70	66	67	87	0	00	29.20	30.08
19	CLR	NC			10.00	70	58	63	66	3	02	29.28	30.17	19	SCT	021			9.00	-RA	69	64	66	84	0	00	29.17	30.05
22	CLR	NC			10.00	65	57	60	75	3	04	29.31	30.19	22	FEW	015			2.50	BR	64	63	63	97	0	00	29.15	30.03
SUNRISE: 0600 SEP 02						SUNSET: 1859						SUNRISE: 0605 SEP 08						SUNSET: 1850										
01	CLR	NC			10.00	61	57	59	87	3	03	29.30	30.18	01	CLR	NC			0.25	FG	64	64	64	100	0	00	29.16	30.04
04	CLR	NC			7.00	58	56	57	93	3	02	29.31	30.19	04	VV	001			0.25	FG	61	61	61	100	0	00	29.14	30.02
07	CLR	NC			5.00	57	55	56	93	0	00	29.34	30.23	07	VV	001			0.25	FG	63	62	62	97	0	00	29.15	30.04
10	CLR	NC			10.00	71	58	63	64	5	14	29.34	30.22	10	VV	001			0.50	FG	65	64	64	97	0	00	29.18	30.06
13	SCT	044			10.00	78	56	65	47	7	05	29.29	30.17	13	SCT	011			6.00	HZ	74	66	69	76	3	VR	29.15	30.03
16	SCT	055			10.00	79	54	64	42	5	11	29.27	30.15	16	SCT	037			10.00		77	63	68	62	0	00	29.10	29.98
19	CLR	NC			10.00	71	58	63	64	3	08	29.23	30.12	19	FEW	020			9.00		71	66	68	84	0	00	29.09	29.97
22	CLR	NC			10.00	64	58	60	81	0	00	29.25	30.13	22	CLR	NC			5.00	BR	67	65	66	93	0	00	29.13	30.01
SUNRISE: 0601 SEP 03						SUNSET: 1857						SUNRISE: 0606 SEP 09						SUNSET: 1848										
01	CLR	NC			6.00	59	57	58	93	0	00	29.24	30.12	01	VV	001			0.00	FG	62	62	62	100	0	00	29.14	30.02
04	BKN	110			3.00	57	55	56	93	0	00	29.24	30.12	04	VV	001			0.00	FG	63	62	62	97	0	00	29.14	30.02
07	CLR	NC			3.00	56	54	55	93	0	00	29.25	30.14	07	VV	001			0.00	FG	63	63	63	100	0	00	29.18	30.06
10	CLR	NC			10.00	69	57	62	66	0	00	29.26	30.14	10	OVC	004			4.00	BR	68	65	66	90	0	00	29.21	30.09
13	CLR	NC			10.00	79	52	63	39	3	04	29.21	30.09	13	FEW	017			10.00		77	66	70	69	3	VR	29.17	30.05
16	CLR	NC			10.00	80	51	63	37	5	08	29.17	30.05	16	BKN	021			10.00		68	65	66	90	0	00	29.17	30.06
19	CLR	NC			10.00	72	53	61	51	5	04	29.16	30.04	19	BKN	110			7.00	-RA	66	64	65	93	0	00	29.20	30.08
22	SCT	110			10.00	63	57	60	81	0	00	29.18	30.06	22	OVC	007			5.00	BR	65	63	64	93	6	09	29.24	30.12
SUNRISE: 0602 SEP 04						SUNSET: 1856						SUNRISE: 0607 SEP 10						SUNSET: 1847										
01	CLR	NC			8.00	59	57	58	93	0	00	29.18	30.06	01	CLR	NC			1.00	BR	62	60	61	93	5	06	29.24	30.11
04	CLR	NC			3.00	56	55	55	96	0	00	29.18	30.06	04	OVC	110			6.00	BR	62	60	61	93	5	06	29.25	30.13
07	BKN	120			0.00	58	56	57	93	0	00	29.21	30.10	07	CLR	NC			9.00		61	59	60	93	5	07	29.28	30.17
10	CLR	NC			6.00	72	60	65	66	0	00	29.24	30.12	10	CLR	NC			10.00		69	59	63	71	8	14	29.31	30.19
13	CLR	NC			10.00	81	54	65	39	5	30	29.21	30.09	13	SCT	030			10.00		75	61	66	62	8	12	29.30	30.18
16	CLR	NC			10.00	82	55	65	40	3	VR	29.18	30.06	16	CLR	NC			10.00		77	59	66	54	8	09	29.27	30.15
19	CLR	NC			10.00	74	56	63	54	3	36	29.19	30.08	19	CLR	NC			10.00		71	59	64	66	0	00	29.27	30.16
22	CLR	NC			10.00	64	58	60	81	0	00	29.23	30.11	22	CLR	NC			10.00		63	61	62	93	5	10	29.30	30.18
SUNRISE: 0603 SEP 05						SUNSET: 1854						SUNRISE: 0608 SEP 11						SUNSET: 1845										
01	CLR	NC			5.00	59	57	58	93	3	01	29.25	30.13	01	CLR	NC			10.00		62	59	60	90	0	00	29.27	30.15
04	CLR	NC			4.00	58	57	57	97	5	35	29.25	30.13	04	CLR	NC			10.00		59	57	58	93	3	07	29.27	30.15
07	CLR	NC			0.25	58	57	57	97	0	00	29.29	30.17	07	OVC	070			4.00	BR	57	56	56	96	0	00	29.28	30.17
10	CLR	NC			10.00	73	59	64	62	0	00	29.33	30.21	10	CLR	NC			10.00		70	59	63	68	0	00	29.26	30.15
13	CLR	NC			10.00	81	52	64	37	6	08	29.31	30.19	13	SCT	027			10.00		76	59	65	56	0	00	29.22	30.10
16	CLR	NC			10.00	81	55	65	41	5	02	29.27	30.15	16	CLR	NC			10.00		77	60	66	56	3	VR	29.18	30.06
19	CLR	NC			10.00	74	57	64	56	3	04	29.27	30.15	19	CLR	NC			10.00		71	60	64	68	0	00	29.18	30.06
22	CLR	NC			8.00	65	60	62	84	0	00	29.30	30.18	22	CLR	NC			9.00		64	61	62	90	0	00	29.20	30.08
SUNRISE: 0604 SEP 06						SUNSET: 1853						SUNRISE: 0609 SEP 12						SUNSET: 1843										
01	CLR	NC			5.00	61	59	60	93	0	00	29.29	30.17	01	CLR	NC			9.00		60	58	59	93	5	35	29.19	30.07
04	CLR	NC			1.75	60	59	59	97	0	00	29.28	30.16	04	CLR	NC			10.00		57	54	55	90	3	02	29.18	30.06
07	CLR	NC			3.00	61	58	59	90	0	00	29.32	30.20	07	CLR	NC			4.00	BR	55	54	54	96	0	00	29.20	30.09
10	CLR	NC			7.00	68	61	64	78	0	00	29.32	30.20	10	CLR	NC			10.00		66	57	61	73	0	00	29.21	30.10
13	BKN	065			10.00	79	62	68	56	5	24	29.30	30.19	13	BKN	034			10.00		72	57	63	59	6	36	29.19	30.07
16	BKN	080			10.00	78	65	70	64	8	18	29.26	30.14	16	CLR	NC			10.00		75	54	63	48	6	03	29.14	30.03
19	BKN	110			8.00	70	66	67	87	0	00	29.25	30.14	19	CLR	NC			10.00		68	57	61	68	6	05	29.15	30.04
22	OVC	090			2.00	68	67	67	97	5	11	29.28	30.16	22	CLR	NC			10.00		63	57	60	81	0	00	29.18	30.07

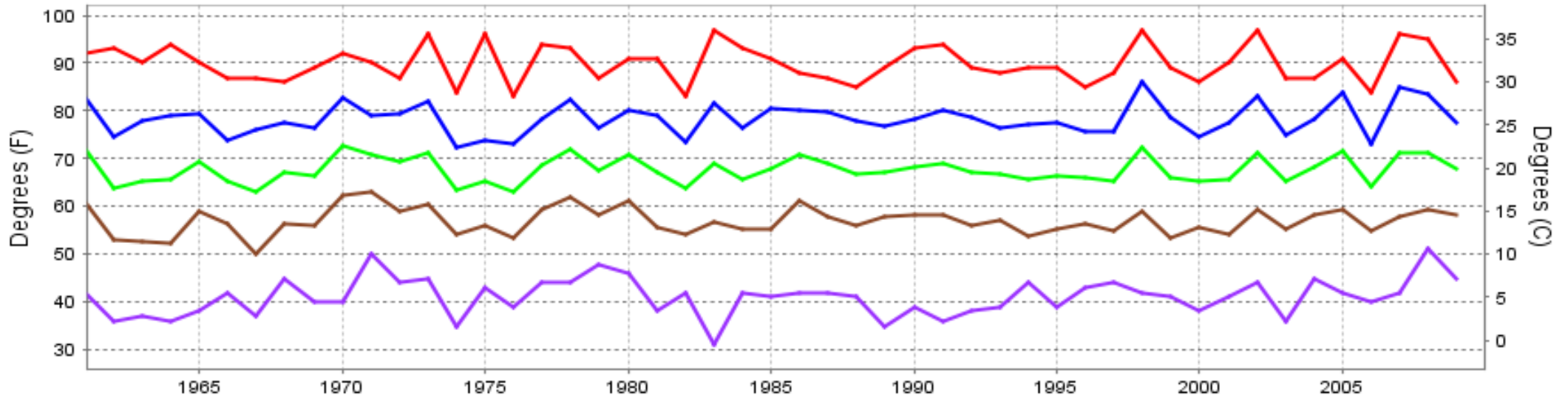
OBSERVATIONS AT 3-HOURLY INTERVALS

HUNTINGTON, WV SEPTEMBER 2009 KHTS

WBAN # 03860

HOUR (LST)	SKY COVER	CEILING 100's of FT.	SATELLITE		WEATHER	TEMPERATURE °F			WIND SPEED (MPH) DIRECTION Tens of Deg	PRESSURE (INCHES, HG)		HOUR (LST)	SKY COVER	CEILING 100's of FT.	SATELLITE		WEATHER	TEMPERATURE °F			WIND SPEED (MPH) DIRECTION Tens of Deg	PRESSURE (INCHES, HG)							
			Observation Time (LST)	Eff Cld Amt Oktas		VISIBILITY (MILES)	DRY BULB	DEW POINT		WET BULB	RELATIVE HUMIDITY (PCT)				STATION	SEA LEVEL		DRY BULB	DEW POINT	WET BULB		RELATIVE HUMIDITY (PCT)	SPEED (MPH)	DIRECTION Tens of Deg	STATION	SEA LEVEL			
																											Observation Time (LST)	Eff Cld Amt Oktas	VISIBILITY (MILES)
SUNRISE: 0610 SEP 13						SUNSET: 1842						SUNRISE: 0615 SEP 19						SUNSET: 1832											
01	CLR	NC			6.00	BR	58	56	57	93	0	00	29.18	30.06	01	OVC	065			10.00		66	53	59	63	5	02	29.26	30.14
04	CLR	NC			3.00	BR	58	57	57	97	0	00	29.16	30.05	04	CLR	NC			10.00		60	52	56	75	6	03	29.25	30.14
07	VV	001			0.00	FG	57	56	56	96	0	00	29.20	30.09	07	OVC	065			10.00		59	52	55	78	6	05	29.29	30.17
10	CLR	NC			10.00		68	59	63	73	0	00	29.21	30.09	10	SCT	080			10.00		69	55	61	61	6	07	29.31	30.19
13	OVC	042			10.00		75	57	64	54	6	04	29.19	30.07	13	CLR	NC			10.00		77	58	65	52	5	VR	29.28	30.16
16	SCT	042			10.00		78	59	66	52	6	01	29.14	30.03	16	CLR	NC			10.00		81	58	67	46	7	03	29.23	30.11
19	CLR	NC			10.00		72	58	64	62	0	00	29.14	30.03	19	CLR	NC			10.00		74	59	65	60	3	06	29.22	30.11
22	CLR	NC			5.00	BR	60	58	59	93	0	00	29.17	30.05	22	CLR	NC			10.00		66	61	63	84	5	05	29.25	30.13
SUNRISE: 0611 SEP 14						SUNSET: 1840						SUNRISE: 0616 SEP 20						SUNSET: 1831											
01	CLR	NC			1.50	BR	56	55	55	96	0	00	29.16	30.04	01	CLR	NC			6.00	BR	63	61	62	93	0	00	29.25	30.13
04	VV	001			0.25	FG	54	54	54	100	0	00	29.16	30.05	04	CLR	NC			5.00	BR	62	60	61	93	3	08	29.24	30.12
07	VV	001			0.00	FG	54	54	54	100	0	00	29.19	30.08	07	CLR	NC			3.00	BR	63	61	62	93	0	00	29.24	30.12
10	CLR	NC			10.00		67	60	63	78	0	00	29.21	30.10	10	OVC	100			10.00	-RA	71	64	67	79	3	12	29.27	30.16
13	CLR	NC			10.00		79	56	65	45	6	09	29.18	30.06	13	OVC	060			3.00	-RA BR	70	68	69	93	3	06	29.26	30.14
16	CLR	NC			10.00		81	57	66	44	5	VR	29.12	30.01	16	SCT	090			10.00		76	69	71	79	6	13	29.20	30.09
19	CLR	NC			10.00		73	59	64	62	0	00	29.12	30.00	19	SCT	065			10.00		73	66	68	79	3	12	29.19	30.07
22	CLR	NC			7.00		64	61	62	90	0	00	29.14	30.02	22	CLR	NC			10.00		70	63	66	79	0	00	29.20	30.08
SUNRISE: 0612 SEP 15						SUNSET: 1839						SUNRISE: 0617 SEP 21						SUNSET: 1829											
01	CLR	NC			2.00	BR	60	59	59	97	0	00	29.14	30.02	01	OVC	070			10.00	-RA	68	63	65	84	5	13	29.21	30.09
04	CLR	NC			1.00	BR	58	56	57	93	0	00	29.13	30.01	04	BKN	042			10.00		68	63	65	84	3	17	29.20	30.08
07	CLR	NC			2.00	BR	57	56	56	96	0	00	29.15	30.04	07	BKN	110			10.00		67	64	65	90	5	12	29.22	30.10
10	CLR	NC			10.00		73	62	66	69	0	00	29.17	30.05	10	OVC	085			10.00		70	66	67	87	3	12	29.23	30.11
13	FEW	042			10.00		81	59	67	47	0	00	29.14	30.02	13	SCT	065			10.00		78	66	70	67	9	15	29.22	30.10
16	CLR	NC			10.00		82	57	66	43	0	00	29.10	29.98	16	BKN	055			10.00		75	66	69	74	3	13	29.20	30.08
19	CLR	NC			10.00		74	60	65	62	0	00	29.10	29.98	19	FEW	075			10.00		72	67	69	84	3	11	29.21	30.09
22	CLR	NC			6.00	BR	66	63	64	90	0	00	29.13	30.01	22	OVC	075			10.00		70	66	67	87	5	13	29.23	30.11
SUNRISE: 0612 SEP 16						SUNSET: 1837						SUNRISE: 0618 SEP 22						SUNSET: 1828											
01	CLR	NC			3.00	BR	64	63	63	97	0	00	29.12	30.00	01	BKN	080			10.00		70	65	67	84	5	15	29.23	30.11
04	VV	001			0.25	FG	62	61	61	97	0	00	29.12	29.99	04	FEW	075			10.00		69	63	65	81	0	00	29.22	30.10
07	CLR	NC			6.00	BR	63	60	61	90	3	03	29.16	30.04	07	BKN	070			8.00		67	64	65	90	0	00	29.25	30.13
10	CLR	NC			10.00		73	61	66	66	6	01	29.19	30.06	10	CLR	NC			10.00		75	64	68	69	8	17	29.27	30.15
13	CLR	NC			10.00		80	61	68	52	8	03	29.17	30.05	13	SCT	035			10.00		84	65	71	53	6	18	29.24	30.11
16	CLR	NC			10.00		79	59	67	50	9	03	29.14	30.02	16	FEW	085			10.00		85	65	72	51	6	17	29.20	30.07
19	CLR	NC			10.00		73	59	64	62	3	02	29.16	30.04	19	FEW	080			10.00		78	66	70	67	5	13	29.20	30.07
22	CLR	NC			10.00		67	55	60	66	3	02	29.19	30.07	22	CLR	NC			10.00		70	68	69	93	0	00	29.22	30.10
SUNRISE: 0613 SEP 17						SUNSET: 1836						SUNRISE: 0619 SEP 23						SUNSET: 1826											
01	CLR	NC			10.00		62	54	57	75	6	03	29.19	30.07	01	OVC	095			10.00		71	67	68	87	3	20	29.24	30.11
04	SCT	055			10.00		60	54	57	81	3	02	29.17	30.05	04	CLR	NC			9.00		67	65	66	93	3	10	29.22	30.10
07	CLR	NC			10.00		58	53	55	84	5	02	29.20	30.09	07	OVC	050			10.00		68	66	67	93	0	00	29.26	30.14
10	CLR	NC			10.00		67	58	62	73	3	03	29.22	30.10	10	BKN	031			10.00		76	67	70	74	7	21	29.29	30.16
13	CLR	NC			10.00		77	62	67	60	6	35	29.19	30.07	13	BKN	025			10.00		83	69	73	63	5	VR	29.26	30.13
16	FEW	038			10.00		80	63	69	56	3	03	29.15	30.03	16	SCT	110			10.00		78	70	73	77	0	00	29.23	30.11
19	CLR	NC			10.00		73	64	67	74	3	03	29.14	30.03	19	BKN	060			10.00		74	70	71	87	0	00	29.23	30.11
22	FEW	065			6.00	BR	67	65	66	93	3	10	29.16	30.05	22	CLR	NC			8.00		72	70	71	93	0	00	29.25	30.13
SUNRISE: 0614 SEP 18						SUNSET: 1834						SUNRISE: 0619 SEP 24						SUNSET: 1825											
01	SCT	070			5.00	BR	66	64	65	93	0	00	29.18	30.06	01	CLR	NC			1.50	BR	70	69	69	97	5	20	29.25	30.12
04	BKN	070			3.00	BR	64	62	63	93	0	00	29.17	30.04	04	VV	001			0.25	FG	68	67	67	97	0	00	29.24	30.11
07	OVC	070			3.00	BR	64	63	63	97	0	00	29.19	30.07	07	OVC	021			0.00	FG	69	68	68	97	0	00	29.25	30.13
10	BKN	060			6.00	BR	70	66	67	87	5	VR	29.21	30.09	10	OVC	009			6.00	HZ	75	69	71	82	3	VR	29.25	30.13
13	OVC	060			10.00		76	66	69	71	0	00	29.20	30.08	13	BKN	018			8.00		79	69	72	72	5	35	29.21	30.09
16	BKN	035			10.00		76	66	69	71	0	00	29.17	30.05	16	BKN	021			10.00		77	67	70	71	5	03	29.17	30.04
19	SCT	040			10.00		73	65	68	76	0	00	29.19	30.07	19	OVC	080			6.00	-RA BR	72	68	69	87	5	02	29.18	30.06
22	SCT	065			6.00	BR	69	66	67	90	6	34	29.23	30.11	22	OVC	027			1.25	+RA BR	68	67	67	97	5	VR	29.21	30.09

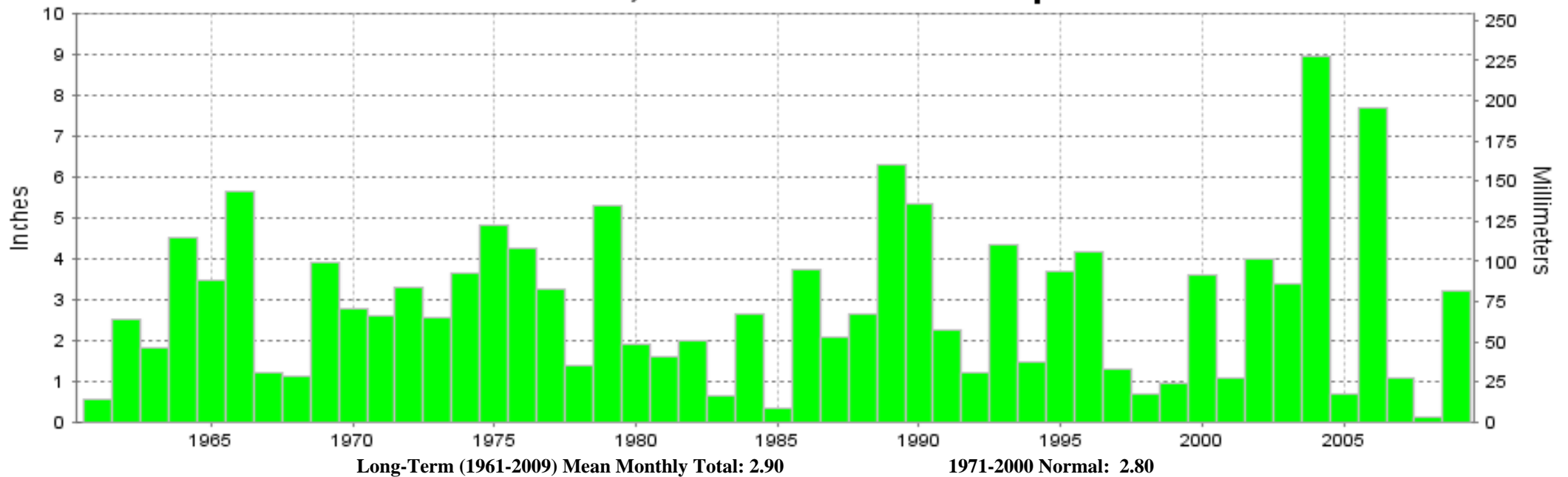
HUNTINGTON, WV SEPTEMBER Temperatures



— Extreme Max — Mean Max — Mean — Mean Min — Extreme Min

Long-Term (1961-2009) Mean: 67.7
1971-2000 Normal: 66.9

HUNTINGTON, WV SEPTEMBER Precipitation



Long-Term (1961-2009) Mean Monthly Total: 2.90

1971-2000 Normal: 2.80



SEPTEMBER 2009
HUNTINGTON, WV

LOCAL CLIMATOLOGICAL DATA NOAA, National Climatic Data Center

I certify that this is an official publication of the National Oceanic and Atmospheric Administration (NOAA). It is compiled using information from weather observing sites operated by NOAA-National Weather Service / Department Of Transportation-Federal Aviation Administration and received at the National Climatic Data Center (NCDC), Asheville, North Carolina 28801.

DIRECTOR

NCDC now offers an annual online subscription for the **Edited Local Climatological Data Publication**. When you purchase this subscription service, you will have **immediate online access** to all previous publications back to July 1996 and all publications thereafter until the expiration of the subscription. Your subscription is valid for one year after purchase. **The total cost for online delivery (including back issues) is significantly less than the cost for offline delivery.**

To order this and other subscriptions online with your credit card, go to: www.ncdc.noaa.gov and choose subscriptions.

We welcome your questions or comments, please contact us at:

Toll Free Number (866) 742-3322 (voice)

Fax Number : (304) 726-4409

TDD : (828) 271-4010

or Email : ncdc.info@noaa.gov

Local Climatological Data is available at www.ncdc.noaa.gov

NCDC Subscription Services Center
310 State Route 956 Building 300
Rocket Center, WV 26726
OFFICIAL BUSINESS, PENALTY FOR PRIVATE USE \$300

FIRST CLASS
POSTAGE AND FEES PAID
NOAA
PERMIT G-19

For address correction, please return a photocopy of this page to Subscription Services indicating changes