



JULY 2010 LOCAL CLIMATOLOGICAL DATA

NOAA, National Climatic Data Center

HUNTINGTON, WV
TRI-STATE/M.J.FERGUSON FIELD AIRPORT (KHTS)
Lat:38° 22'N Long: 82° 33'W Elev (Ground) 824 Feet
Time Zone : EASTERN WBAN: 03860 ISSN#: 0198-5655



Date 1	Temperature °F						Deg Days BASE 65°		WEATHER 10	SNOW/ICE ON GND(IN)		PRECIPITATION ON GND(IN)		PRESSURE (INCHES OF HG)		WIND SPEED = MPH DIR = TENS OF DEGREES								Date 24
	MAXIMUM 2	MINIMUM 3	AVERAGE 4	DEP FROM NORMAL 5	AVERAGE DEW PT 6	AVERAGE WET BULB 7	HEATING 8	COOLING 9		0700 LST 11	1300 LST 12	2400 LST 13	2400 LST 14	AVERAGE STATION 15	AVERAGE SEA LEVEL 16	RESULTANT SPEED 17	RES DIR 18	AVERAGE SPEED 19	MAXIMUM					
																			3-SEC		2-MIN			
01	77	57	67*	-7	50	58	0	2		0		0.0	0.00	29.36	30.26	3.5	04	4.4	17	05	12	36	01	
02	81	54*	68	-6	53	59	0	3	BR	0		0.0	0.00	29.35	30.23	3.1	04	3.6	15	06	10	03	02	
03	87	55	71	-3	61	65	0	6	BR	0		0.0	0.00	29.24	30.12	0.3	18	0.9			7		03	
04	90	65	78	4	67	71	0	13	BR HZ	0		0.0	0.00	29.18	30.06	2.2	19	3.0	14	24	9	25	04	
05	92	68	80	5	67	72	0	15	FG+ FG BR HZ	0		0.0	0.00	29.16	30.04	1.3	18	1.8			6		18	05
06	95	67	81	6	68	72	0	16	BR HZ	0		0.0	0.00	29.18	30.06	0.6	35	1.3	10	32	7	03	06	
07	95	71	83	8	69	73	0	18	BR HZ	0		0.0	0.00	29.21	30.08	1.5	36	2.3	12	02	8	36	07	
08	95*	69	82	7	67	72	0	17	BR HZ	0		0.0	0.00	29.15	30.00	0.9	29	1.4	13	35	8	27	08	
09	81	71	76	1	71	73	0	11	TS TSRA RA BR HZ	0		0.0	0.47	29.05	29.92	2.7	27	3.7	16	30	10	27	09	
10	87	66	77	2	63	68	0	12	BR HZ	0		0.0	0.00	29.07	29.95	2.0	36	2.7			7	02	10	
11	89	62	76	1	61	66	0	11	BR	0		0.0	0.00	29.04	29.90	1.0	15	1.8	15	22	12	22	11	
12	85	66	76	1	68	70	0	11	RA FG BR	0		0.0	0.31	28.92	29.78	3.5	19	4.5	21	23	14	23	12	
13	75	65	70	-5	68	69	0	5	RA FG+ FG BR	0		0.0	0.82	28.97	29.86	2.0	24	3.3	23	19	15	20	13	
14	86	63	75	0	66	69	0	10	FG+ BR	0		0.0	0.00	29.16	30.05	0.4	24	1.3	10	33	7	24	14	
15	88	66	77	2	68	71	0	12	FG+ FG BR	0		0.0	0.00	29.16	30.03	1.3	19	2.0	10	20	8	21	15	
16	86	68	77	2	71	73	0	12	RA BR	0		0.0	0.02	29.11	29.99	1.9	24	2.6	20	25	14	24	16	
17	87	69	78	3	69	71	0	13	TS TSRA RA FG BR	0		0.0	0.54	29.11	29.99	3.1	20	5.8	36	24	23	24	17	
18	88	69	79	3	70	73	0	14	TSRA RA BR	0		0.0	0.07	29.10	29.96	6.0	21	6.2	37	24	31*	33	18	
19	88	71	80	4	69	72	0	15	RA	0		0.0	0.01	29.06	29.94	5.1	24	5.6	20	18	15	18	19	
20	87	69	78	2	70	72	0	13	TS TSRA RA FG BR	0		0.0	1.59	29.13	30.01	3.4	20	4.5	26	01	20	01	20	
21	86	71	79	3	72	74	0	14	TS TSRA RA BR	0		0.0	0.64	29.18	30.05	4.9	23	5.6	21	31	15	32	21	
22	89	72	81	5	73	75	0	16	RA FG BR HZ	0		0.0	0.23	29.18	30.06	2.3	20	2.7	13	24	8	20	22	
23	91	75	83	7	72	75	0	18	BR	0		0.0	0.00	29.15	30.02	5.4	22	5.6	18	28	14	24	23	
24	91	74	83*	7	71	75	0	18		0		0.0	0.00	29.13	30.00	4.5	23	4.8	22	24	15	24	24	
25	89	73	81	5	73	75	0	16	TS TSRA RA FG+ FG BR	0		0.0	0.28	29.10	29.98	2.4	22	4.3	38*	32	22	11	25	
26	85	69	77	1	67	70	0	12	BR	0		0.0	0.00	29.19	30.08	2.9	04	3.5			7	03	26	
27	87	67	77	1	68	71	0	12	BR HZ	0		0.0	0.00	29.17	30.05	0.5	22	1.4	12	23	9	23	27	
28	86	72	79	3	73	74	0	14	TS TSRA RA FG+ FG BR HZ	0		0.0	0.72	29.16	30.03	3.3	20	4.0	29	25	20	24	28	
29	87	69	78	2	70	73	0	13	RA BR	0		0.0	T	29.10	29.98	3.4	32	5.6	20	34	13	34	29	
30	82	63	73	-3	59	64	0	8		0		0.0	0.00	29.13	30.00	2.7	05	3.5	18	15	10	03	30	
31	82	65	74	-2	64	67	0	9		0		0.0	0.00	29.00	29.87	0.8	14	1.7	13	24	9	20	31	

86.9	67.1	77.0	☼	67.0	70.4	0.0	12.2	< MONTHLY AVERAGES TOTALS >				0.0	5.70	29.13	30.01	1.2	22	3.4	< MONTHLY AVERAGES			
1.8	1.7	1.7		-----DEPARTURE FROM NORMAL ----->								1.24	SUNSHINE, CLOUD, & VISIBILITY TABLES ON PAGE 3									
DEGREE DAYS								GREATEST 24-HR PRECIPITATION : 2.23 DATE : 20-21				SEA LEVEL PRESSURE				DATE TIME						
MONTHLY								GREATEST 24-HR SNOWFALL : 0.0 DATE :				MAXIMUM : 30.30				01 0851						
SEASON TO DATE								GREATEST SNOW DEPTH : 0 DATE :				MINIMUM : 29.74				12 1812						
TOTAL DEPARTURE								NUMBER OF -> DAYS WITH				MAXIMUM TEMP >= 90 : 7		MINIMUM TEMP <= 32 : 0		PRECIPITATION >= 0.01 INCH : 12						
TOTAL DEPARTURE												MAXIMUM TEMP <= 32 : 0		MINIMUM TEMP <= 0 : 0		PRECIPITATION >= 0.10 INCH : 9						
HEATING : 0 -2												THUNDERSTORMS : 7		HEAVY FOG : 6		SNOWFALL >= 1.0 INCH : 0						
COOLING : 379 42																						

JULY 2010
HUNTINGTON, WV

HOURLY PRECIPITATION

(WATER EQUIVALENT IN INCHES)

HUNTINGTON, WV (KHTS)
JULY 2010

WBAN # 03860

Date	FOR HOUR (LST) ENDING AT												Date	FOR HOUR (LST) ENDING AT												Date	Sum of Hourly Data	2400 LST Water Equiv.
	1	2	3	4	5	6	7	8	9	10	11	12		13	14	15	16	17	18	19	20	21	22	23	24			
01													01												01	0.00	0.00	
02													02												02	0.00	0.00	
03													03												03	0.00	0.00	
04													04												04	0.00	0.00	
05													05												05	0.00	0.00	
06													06												06	0.00	0.00	
07													07												07	0.00	0.00	
08													08												08	0.00	0.00	
09			T	0.28	0.10	0.07				T	T		09	T	T	T	0.02	T	T				T	09	0.47	0.47		
10													10												10	0.00	0.00	
11													11												11	0.00	0.00	
12					T	T	0.19	0.10	0.01	0.01			12												12	0.31	0.31	
13									0.01	0.53	0.01	0.05	13	0.02	0.01	0.08	0.09	0.01	T	T	0.01	T		13	0.82	0.82		
14													14												14	0.00	0.00	
15													15												15	0.00	0.00	
16											0.01	0.01	16	T										16	0.02	0.02		
17						0.05	0.13	0.02	T	T			17			0.03	0.26	T	0.05					17	0.54	0.54		
18												0.07	18											18	0.07	0.07		
19													19											19	0.01	0.01		
20													20		T	0.03	T	T		T		0.94	0.27	0.10	0.25	20	1.59	1.59
21	0.30	0.28	0.06	T							T	T	21	T										21	0.64	0.64		
22													22											22	0.23	0.23		
23													23											23	0.00	0.00		
24													24											24	0.00	0.00		
25													25	0.07	0.01	0.02	0.17	0.01	T					25	0.28	0.28		
26													26											26	0.00	0.00		
27													27											27	0.00	0.00		
28													28	0.03	0.69					T				28	0.72	0.72		
29													29	T	T									29	T	T		
30													30											30	0.00	0.00		
31													31											31	0.00	0.00		

* Indicates sum of Hourly and Daily disagree.

MAXIMUM SHORT DURATION PRECIPITATION (See Note)

Time Period (Minutes)	5	10	15	20	30	45	60	80	100	120	150	180
Precipitation (Inches)	0.30	0.53	0.67	0.69	0.78	0.98	1.08	1.15	1.21	1.27	1.29	1.32
Ending Date	28	28	28	28	20	20	20	20	20	20	20	20
Ending Time (Hr/Min)	1319	1324	1328	1329	2105	2105	2119	2139	2155	2217	2223	2301

Note : The hourly and daily precipitation totals are printed in the last 2 columns and hi-lighted in red when they disagree. NWS does not edit ASOS hourly values but may edit daily and monthly totals. Hourly, daily, and monthly totals are printed as reported by the ASOS site.

Date and time are not entered for TRACE amounts.

REFERENCE NOTES & SUPPLEMENTAL SUMMARIES

* = Extreme for the month (last occurrence if more than one).

T = Trace precipitation amount.

+ = also occurs on earlier date.

FG+ = Heavy fog, visibility .25 miles or less.

BLANK entries denote missing or unreported data.

Resultant wind is the vector sum of the wind speeds and directions divided by the number of observations.

Wind direction is recorded in tens of degrees (2 digits) clockwise from true north. '00' = calm, 'VR' = variable.

Precipitation is for the 24-hour period ending at the time indicated in the column heading.

Water Equivalent of snow on the ground is reported only when the depth is 2 or more inches.

NORMALS ARE FOR THE YEARS 1971-2000

WEATHER NOTATIONS

QUALIFIER	WEATHER PHENOMENA		
DESCRIPTOR	PRECIPITATION	OBSCURATION	OTHER
BC Patches	DZ Drizzle	BR Mist	DS Duststorm
BL Blowing	GR Hail	DU Widespread Dust	FC Funnel Cloud
DR Low Drifting	GS Small Hail and/or Snow Pellets	FG Fog	+FC Tornado Waterspout
FZ Freezing	IC Ice Crystals	FU Smoke	PO Well-Developed Dust/Sand Whirls
MI Shallow	PL Ice Pellets	HZ Haze	
PR Partial	RA Rain	PY Spray	SQ Squalls
SH Shower(s)	SG Snow Grains	SA Sand	SS Sandstorm
TS Thunderstorm	SN Snow	VA Volcanic Ash	GL Glaze
VC In the Vicinity	UP Unkown Precipitation		

Intensity (as indicated on pages 4 to 6):
'+' = Heavy '' = Moderate '-' = Light

HUNTINGTON, WV JULY 2010

Ceilometer (30-second) data are used to derive cloudiness at or below 12,000 feet. This cloudiness is the mean cloud cover detected during sunrise to sunset (SR-SS), or midnight to midnight (MN-MN).

Satellite data are used to derive cloudiness above 12,000 feet. Effective Cloud Amount is based on the cloud cover and the transparency of the clouds within the satellite field of view (approx. 31x31 miles).

Sky Condition is based on the sum (not to exceed 8) of the sunrise to sunset cloud cover below and above 12,000 feet. Both ceilometer and satellite data must be present to compute Sky Condition. Clear = 0-2 oktas, Partly Cloudy = 3-6 oktas, Cloudy = 7-8 oktas.

A Heating (Cooling) Degree Day is the difference between the average daily temperature and 65 degrees F. The HDD season begins July 1, the CDD season begins January 1.

Dew Point is the temperature to which the air must be cooled to achieve 100% relative humidity. Wet Bulb is the temperature the air would have if cooled to saturation at constant pressure by evaporation of water into it.

Snow Depth, Snowfall, and Sunshine data may come from nearby sites that the National Weather Service deems Climatologically representative of this site.

ADDITIONAL NOTES:

Station Augmentation-HUNTINGTON SWG PL COOP
Lat/Lon:38.41833/-82.51 Elevation:520
Distance:3 MI Dir:N
Augmented Elements:Temp, Precip, Snow
Equipment:MMTS, SRG, Snowboard

Date	SUNSHINE		CLOUDINESS (OKTAS)				VISIBILITY (MILES)		RESERVED
	TOTAL MINUTES	PERCENT POSSIBLE	SR-SS		MN-MN		MINIMUM	MAXIMUM	
			Sky Cover	Satellite	Sky Cover	Satellite			
01							10.00	10.00	
02							5.00	10.00	
03							4.00	10.00	
04							2.00	9.00	
05							0.50	10.00	
06							2.50	9.00	
07							1.25	7.00	
08							1.00	9.00	
09							1.00	10.00	
10							5.00	10.00	
11							4.00	10.00	
12							0.50	10.00	
13							0.50	10.00	
14							0.00	10.00	
15							0.25	10.00	
16							3.00	10.00	
17							3.00	10.00	
18							3.00	10.00	
19							8.00	10.00	
20							0.50	10.00	
21							5.00	10.00	
22							3.00	10.00	
23							5.00	10.00	
24							8.00	10.00	
25							0.25	10.00	
26							0.75	10.00	
27							4.00	10.00	
28							4.00	10.00	
29							4.00	10.00	
30							9.00	10.00	
31							7.00	10.00	
MONTHLY AVGS							3.39	9.81	
SUNSHINE (Minutes)									
Total : 0					Possible : 27032				
Percent Possible : 0									
NUMBER OF DAYS WITH : SKY CONDITION									
Clear		Partly CLDY			Cloudy			Missing	
MINIMUM VISIBILITY (MILES)									
<= .25			<= 3.0				>= 7.0		
3			17				5		

OBSERVATIONS AT 3-HOURLY INTERVALS

HUNTINGTON, WV
JULY 2010 KHTS

WBAN # 03860

HOUR (LST)	SKY COVER	CEILING 100's of FT.	SATELLITE		WEATHER	TEMPERATURE °F			WIND SPEED (MPH) DIRECTION Tens of Deg	PRESSURE (INCHES, HG)			
			Observation Time (LST)	Eff Cld Amt Oktas		VISIBILITY (MILES)	DRY BULB	DEW POINT		WET BULB	RELATIVE HUMIDITY (PCT)	STATION	SEA LEVEL
SUNRISE: 0526 JUL 25						SUNSET: 1947							
01	CLR	NC				74	71	72	90	0 00	29.12	29.99	
04	CLR	NC				75	70	72	85	3 21	29.09	29.96	
07	CLR	NC				77	70	72	79	7 22	29.09	29.96	
10	OVC	050				84	73	76	70	6 25	29.12	29.99	
13	FEW	060				87	77	80	72	6 27	29.08	29.95	
16	BKN	050			+RA BR	78	74	75	88	10 06	29.08	29.95	
19	CLR	NC			BR	77	75	76	94	0 00	29.12	29.99	
22	OVC	034			FG	74	73	73	97	0 00	29.15	30.02	
SUNRISE: 0527 JUL 26						SUNSET: 1947							
01	OVC	007			BR	74	73	73	97	6 04	29.16	30.03	
04	OVC	060				71	68	69	90	5 04	29.20	30.08	
07	CLR	NC				71	66	68	84	5 04	29.24	30.11	
10	BKN	015				75	68	70	79	0 00	29.25	30.13	
13	SCT	038				81	69	73	67	5 VR	29.23	30.11	
16	SCT	042				83	66	72	57	5 06	29.18	30.06	
19	CLR	NC				80	65	70	60		29.15	30.03	
22	CLR	NC				72	66	68	82	0 00	29.19	30.07	
SUNRISE: 0528 JUL 27						SUNSET: 1946							
01	CLR	NC				69	65	66	87	0 00	29.18	30.05	
04	FEW	065			BR	69	66	67	90	0 00	29.17	30.04	
07	CLR	NC				69	64	66	84	3 02	29.21	30.08	
10	CLR	NC				80	67	71	65	0 00	29.21	30.08	
13	CLR	NC				86	67	73	53	3 VR	29.17	30.04	
16	FEW	042				87	70	75	57	6 18	29.15	30.03	
19	FEW	060				84	68	73	59	0 00	29.14	30.02	
22	SCT	041			HZ	78	73	75	85	0 00	29.16	30.03	
SUNRISE: 0529 JUL 28						SUNSET: 1945							
01	CLR	NC			BR	74	72	73	94	3 22	29.16	30.03	
04	OVC	011			BR	72	70	71	93	0 00	29.18	30.05	
07	OVC	005			BR	73	71	72	93	6 21	29.19	30.06	
10	BKN	012			HZ	79	72	74	79	6 20	29.20	30.07	
13	SCT	080			HZ	82	73	76	74	0 00	29.18	30.05	
16	CLR	NC				86	73	77	65	7 22	29.12	29.99	
19	OVC	055			-RA	80	74	76	82	0 00	29.13	30.01	
22	CLR	NC				77	74	75	91	5 19	29.13	30.01	
SUNRISE: 0530 JUL 29						SUNSET: 1944							
01	CLR	NC				76	73	74	90	5 25	29.11	29.98	
04	SCT	031			BR	75	72	73	90	5 23	29.12	29.99	
07	OVC	019			BR	76	72	73	87	0 00	29.14	30.01	
10	BKN	030				81	73	75	77	3 VR	29.13	30.00	
13	OVC	055				83	72	75	70	5 33	29.11	29.98	
16	BKN	048				85	71	75	63	10 35	29.08	29.94	
19	CLR	NC				81	66	71	60	5 35	29.08	29.94	
22	CLR	NC				74	63	67	69	5 01	29.13	30.01	
SUNRISE: 0530 JUL 30						SUNSET: 1943							
01	CLR	NC				68	60	63	76	3 VR	29.13	30.01	
04	CLR	NC				65	58	61	78	0 00	29.12	29.99	
07	CLR	NC				65	59	61	81	3 04	29.16	30.04	
10	CLR	NC				74	59	65	60	3 VR	29.16	30.04	
13	CLR	NC				80	57	66	45	9 08	29.14	30.01	
16	CLR	NC				81	57	66	44	7 04	29.10	29.98	
19	CLR	NC				77	56	64	48	5 05	29.08	29.96	
22	CLR	NC				69	62	65	79	0 00	29.09	29.96	

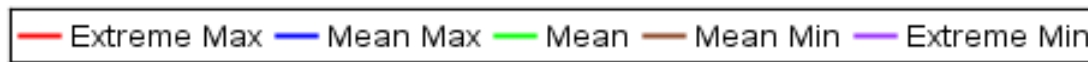
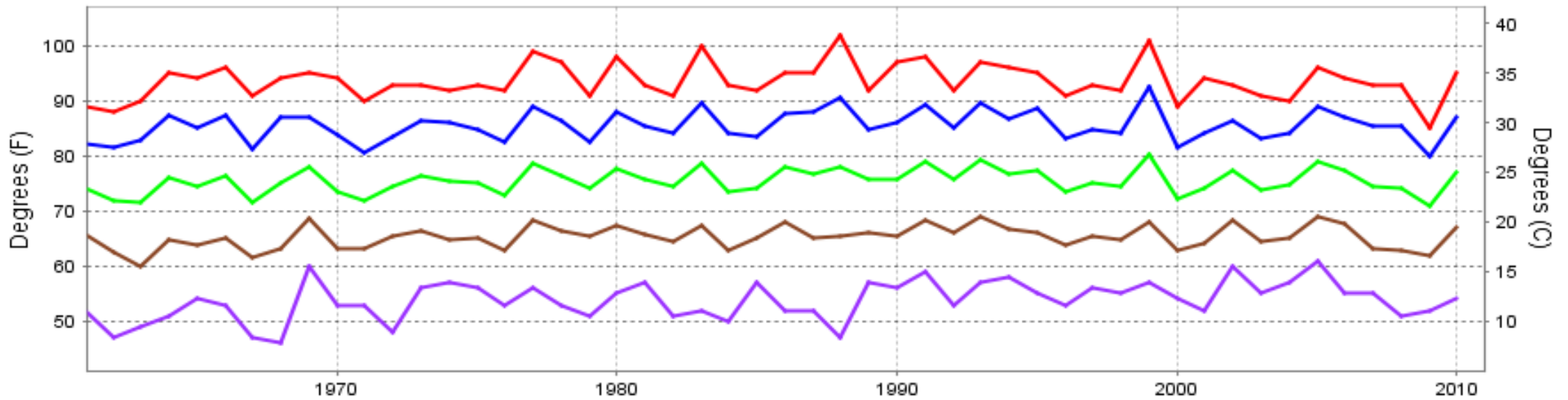
HOUR (LST)	SKY COVER	CEILING 100's of FT.	SATELLITE		WEATHER	TEMPERATURE °F			WIND SPEED (MPH) DIRECTION Tens of Deg	PRESSURE (INCHES, HG)							
			Observation Time (LST)	Eff Cld Amt Oktas		VISIBILITY (MILES)	DRY BULB	DEW POINT		WET BULB	RELATIVE HUMIDITY (PCT)	STATION	SEA LEVEL				
SUNRISE: 0531 JUL 31						SUNSET: 1942											
01	CLR	NC				9.00					67	64	65	90	0 00	29.07	29.93
04	SCT	120				8.00					66	63	64	90	0 00	29.03	29.89
07	FEW	085				7.00					66	63	64	90	0 00	29.03	29.89
10	CLR	NC				10.00					75	64	68	69	0 00	29.01	29.88
13	BKN	044				10.00					79	61	68	54	6 23	28.99	29.86
16	OVC	065				10.00					79	64	69	60	3 03	28.97	29.83
19	OVC	047				10.00					77	67	70	71	0 00	28.95	29.82
22	OVC	065				10.00					73	67	69	82	5 07	28.99	29.85

3-HOURLY OBSERVATION NOTES
 Sky Cover is the amount of the sky obscured. CLR or SKC = 0, FEW = 1/8-2/8, SCT = 3/8-4/8, BKN = 5/8-7/8, OVC = 8/8, W = Vertical Visibility = 8/8
 Ceiling is reported in hundreds of feet above ground level for clouds at or below 12,000 feet. NC = No Ceiling detected.
 & = Original observation contained additional weather elements.
 See page 3 for additional notes.

SUMMARY BY HOUR

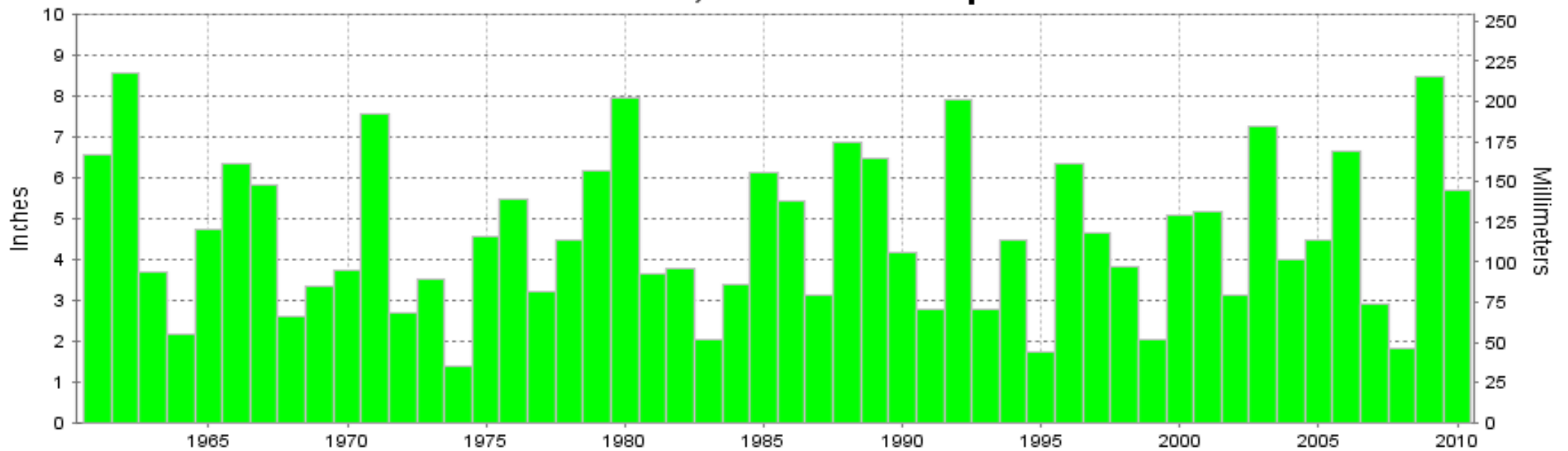
HOUR (LST)	AVERAGES								RESULTANT WIND (MPH)			
	CEILOMETER	EFF CLD AMT	DRY BULB	DEW POINT	WET BULB	RELATIVE HUMIDITY	PRESSURE (Inches, HG)		VISIBILITY (Miles)	WIND SPEED (MPH)	SPEED	DIRECTION
							STATION	SEA LEVEL				
01			71	67	68	89	29.14	30.01	6.48	2	1	21
02			70	67	68	89	29.14	30.01	6.64	2	1	24
03			70	66	68	90	29.13	30.00	6.52	2	2	25
04			69	66	67	90	29.14	30.01	6.37	2	1	23
05			69	66	67	91	29.14	30.02	6.43	2	1	23
06			68	66	67	91	29.16	30.03	5.56	3	1	24
07			70	67	68	89	29.16	30.04	5.98	3	1	23
08			73	67	70	83	29.17	30.04	7.28	3	2	25
09			76	68	71	76	29.17	30.05	7.89	4	1	24
10			79	68	72	71	29.17	30.04	8.33	4	2	26
11			81	68	72	65	29.17	30.04	9.13	5	3	26
12			82	67	72	62	29.16	30.04	8.74	5	3	26
13			84	67	73	58	29.15	30.02	9.03	6	3	26
14			84	67	73	57	29.14	30.01	9.16	5	1	24
15			85	67	73	56	29.12	30.00	8.97	5	2	26
16			85	66	73	57	29.12	29.99	9.02	6	2	26
17			84	67	73	57	29.11	29.98	9.23	5	2	26
18			83	67	72	59	29.10	29.97	9.35	5	2	26
19			82	67	72	63	29.11	29.98	9.27	3	1	25
20			79	67	71	69	29.11	29.98	9.06	2	0	16
21			76	68	71	75	29.12	29.99	8.69	2	1	21
22			74	68	70	82	29.13	30.00	7.85	2	1	18
23			73	68	70	85	29.13	30.00	7.48	2	2	25
24			72	68	69	88	29.13	30.00	6.65	1	1	23

HUNTINGTON, WV JULY Temperatures



Long-Term (1961-2010) Mean: 75.4
 1971-2000 Normal: 75.3

HUNTINGTON, WV JULY Precipitation



Long-Term (1961-2010) Mean Monthly Total: 4.62

1971-2000 Normal: 4.46



JULY 2010
HUNTINGTON, WV

LOCAL CLIMATOLOGICAL DATA NOAA, National Climatic Data Center

I certify that this is an official publication of the National Oceanic and Atmospheric Administration (NOAA). It is compiled using information from weather observing sites operated by NOAA-National Weather Service / Department Of Transportation-Federal Aviation Administration and received at the National Climatic Data Center (NCDC), Asheville, North Carolina 28801.

DIRECTOR

NCDC now offers an annual online subscription for the **Edited Local Climatological Data Publication**. When you purchase this subscription service, you will have **immediate online access** to all previous publications back to July 1996 and all publications thereafter until the expiration of the subscription. Your subscription is valid for one year after purchase. **The total cost for online delivery (including back issues) is significantly less than the cost for offline delivery.**

To order this and other subscriptions online with your credit card, go to: www.ncdc.noaa.gov and choose subscriptions.

We welcome your questions or comments, please contact us at:

Toll Free Number (866) 742-3322 (voice)

Fax Number : (304) 726-4409

TDD : (828) 271-4010

or Email : ncdc.info@noaa.gov

Local Climatological Data is available at www.ncdc.noaa.gov

NCDC Subscription Services Center
310 State Route 956 Building 300
Rocket Center, WV 26726
OFFICIAL BUSINESS, PENALTY FOR PRIVATE USE \$300

FIRST CLASS
POSTAGE AND FEES PAID
NOAA
PERMIT G-19

For address correction, please return a photocopy of this page to Subscription Services indicating changes