



# AUGUST 2009 LOCAL CLIMATOLOGICAL DATA NOAA, National Climatic Data Center

OAK RIDGE, TN  
OAK RIDGE (KOQT)  
Lat:36° 1' N Long: 84° 14' W Elev (Ground) 913 Feet  
Time Zone : EASTERN WBAN: 53868 ISSN#: 0198-487X



Date 1	Temperature °F						Deg Days BASE 65°		WEATHER 10	SNOW/ICE ON GND(IN)		PRECIPITATION ON GND(IN)		PRESSURE (INCHES OF HG)		WIND SPEED = MPH DIR = TENS OF DEGREES								Date 24
	MAXIMUM 2	MINIMUM 3	AVERAGE 4	DEP FROM NORMAL 5	AVERAGE DEW PT 6	AVERAGE WET BULB 7	HEATING 8	COOLING 9		LST 11	LST 12	LST 13	LST 14	AVERAGE STATION 15	AVERAGE SEA LEVEL 16	RESULTANT SPEED 17	RES DIR 18	AVERAGE SPEED 19	MAXIMUM					
																			3-SEC		2-MIN			
20	21	22	23	24																				
01	87	67	77	-1	69	72	0	12	RA FG+ BR			0.01	29.10	30.02	1.3	20	2.5	16	20	10	19	01		
02	87	66	77	-1	66	70	0	12	RA BR			0.45	29.03	29.97	0.9	26	3.1	16	25	10	26	02		
03	86	62	74	-3	63	67	0	9				0.00	29.10	30.03	0.9	20	1.6	14	14	8	20	03		
04	90	65	78	1	67	69	0	13	RA BR			0.38	29.10	30.02	0.3	07	2.5	25*	35	16*	36	04		
05	84	66	75	-2	66	69	0	10				0.00	29.05	29.99	0.3	33	1.6	15	29	10	28	05		
06	86	65	76	-1	66	69	0	11	BR			0.00	29.10	30.03	0.7	06	1.8	13	09	9	08	06		
07	89	65	77	0	66	70	0	12	BR			0.00	29.18	30.12	0.3	06	1.0	9	13	6	22	07		
08	91	67	79	2	69	72	0	14	FG+ FG BR			0.00	29.23	30.16	0.9	24	1.6	14	21	9	19	08		
09	91	71	81	4	71	74	0	16	BR HZ			0.00	29.23	30.16	0.9	21	2.0	14	28	9	20	09		
10	91*	74	83*	6	73	75	0	18	BR			0.00	29.16	30.08	2.2	20	2.7	17	28	12	20	10		
11	84	72	78	1	72	74	0	13	RA FG BR			0.78	29.08	30.00	0.6	20	2.1	14	31	9	32	11		
12	86	68	77	0	69	71	0	12	RA BR			0.63	29.05	29.99	1.0	08	1.4	17	16	14	15	12		
13	88	65	77	0	66	70	0	12	FG+ FG BR			0.00	29.10	30.05	1.1	05	1.5	12	08	8	06	13		
14	90	68	79	2	67	71	0	14	BR			0.00	29.16	30.10	0.1	36	0.5	9	20	7	21	14		
15	90	68	79	2	68	72	0	14	FG+ BR			0.00	29.18	30.11	0.2	13	0.5	12	14	7	14	15		
16	89	69	79	3	69	72	0	14	FG+ BR			0.00	29.21	30.14	0.6	17	1.5	15	17	12	16	16		
17	87	70	79	3	68	72	0	14				0.00	29.23	30.16	1.0	20	2.3	17	25	10	25	17		
18	86	70	78	2	71	73	0	13	RA FG BR			0.38	29.18	30.10	2.0	20	2.8	22	20	15	19	18		
19	86	71	79	3	72	73	0	14	RA FG+ BR			1.27	29.10	30.02	1.3	20	2.4	21	26	14	17	19		
20	86	69	78	2	71	72	0	13	RA BR			0.44	29.03	29.96	1.5	21	3.0	20	19	14	19	20		
21	83	71	77	1	69	72	0	12	RA			0.01	29.00	29.93	2.5	22	3.7	15	21	9	21	21		
22	84	64	74	-2	62	67	0	9				0.00	28.95	29.88	0.9	34	1.6	15	33	8	36	22		
23	78	61	70*	-5	59	63	0	5				0.00	29.02	29.97	1.3	05	2.8	16	07	10	07	23		
24	85	62	74	-1	62	66	0	9				0.00	29.10	30.05	1.1	05	2.6	14	03	10	07	24		
25	86	65	76	1	65	69	0	11				0.00	29.15	30.09	0.2	08	0.9	10	18	7	07	25		
26	90	65	78	3	67	70	0	13	FG+ FG BR			0.00	29.16	30.10	0.3	22	1.1	16	16	8	22	26		
27	81	67	74	-1	67	68	0	9	RA BR			0.15	29.13	30.07	0.2	01	2.0	18	29	10	28	27		
28	80	67	74	-1	67	69	0	9	RA BR			0.06	29.03	29.96	0.6	15	1.1	12	21	7	21	28		
29	81	68	75	0	68	70	0	10	RA			0.01	28.94	29.87	1.9	20	3.0	15	18	10	18	29		
30	82	63	73	-1	62	65	0	8	BR			0.00	29.03	29.98	1.2	06	2.3	13	09	9	09	30		
31	83	59*	71	-3	58	63	0	6				0.00	29.11	30.07	1.6	05	2.4	17	07	10	07	31		
86.0		66.8	76.4	☼	66.9	70.0	0.0	11.6	< MONTHLY AVERAGES   TOTALS >				4.57	29.10	30.04	0.3	19	2.0	< MONTHLY AVERAGES					
-1.2	1.6	0.2	<-----DEPARTURE FROM NORMAL----->						1.18	SUNSHINE, CLOUD, & VISIBILITY TABLES ON PAGE 3														
<b>DEGREE DAYS</b>									GREATEST 24-HR PRECIPITATION : 1.62 DATE : 18-19				SEA LEVEL PRESSURE				DATE TIME							
MONTHLY				SEASON TO DATE					GREATEST 24-HR SNOWFALL :				MAXIMUM : 30.24 17 1100											
TOTAL DEPARTURE				TOTAL DEPARTURE					GREATEST SNOW DEPTH :				MINIMUM : 29.82 29 1654											
HEATING :		0 0		0 0		0 0		NUMBER OF -> DAYS WITH				MAXIMUM TEMP >= 90 : 7		MINIMUM TEMP <= 32 : 0		PRECIPITATION >= 0.01 INCH : 12								
COOLING :		361		14		1193 96						MAXIMUM TEMP <= 32 : 0		MINIMUM TEMP <= 0 : 0		PRECIPITATION >= 0.10 INCH : 8								
												THUNDERSTORMS : 0		HEAVY FOG : 7		SNOWFALL >= 1.0 INCH :								

AUGUST 2009  
OAK RIDGE, TN

# HOURLY PRECIPITATION

(WATER EQUIVALENT IN INCHES)

OAK RIDGE, TN (KOQT)  
AUGUST 2009

WBAN # 53868

Date	FOR HOUR (LST) ENDING AT												Date	FOR HOUR (LST) ENDING AT												Date	Sum of Hourly Data	2400 LST Water Equiv.
	1	2	3	4	5	6	7	8	9	10	11	12		13	14	15	16	17	18	19	20	21	22	23	24			
01													01												01	0.01	0.01	
02	T	T	0.06	0.29	0.02	0.01	0.07	T					02									T	T	0.01	02	0.45	0.45	
03													03												03	0.00	0.00	
04													04			0.15	0.23	T							04	0.38	0.38	
05													05												05	0.00	0.00	
06													06												06	0.00	0.00	
07													07												07	0.00	0.00	
08													08												08	0.00	0.00	
09													09												09	0.00	0.00	
10													10												10	0.00	0.00	
11													11	0.31								T	T	0.01	11	0.78	0.78	
12	T	T								0.02	0.44		12					0.63	T					12	0.63	0.63		
13													13												13	0.00	0.00	
14													14												14	0.00	0.00	
15													15												15	0.00	0.00	
16													16												16	0.00	0.00	
17													17					0.01							17	0.00	0.00	
18	T	0.02											18			0.76	T	0.01						18	0.38	0.38		
19	T	0.05											19			0.03		0.41			0.37	0.09	0.09	0.25	0.01	19	1.27	1.27
20											T		20			0.03		0.41	T					20	0.44	0.44		
21												0.01	21												21	0.01	0.01	
22													22												22	0.00	0.00	
23													23												23	0.00	0.00	
24													24												24	0.00	0.00	
25													25												25	0.00	0.00	
26													26												26	0.00	0.00	
27													27			0.01	0.07	0.01	0.06	T				27	0.15	0.15		
28						T	T	T				0.03	0.03	28	T							T		28	0.06	0.06		
29													29		0.01	T								29	0.01	0.01		
30													30												30	0.00	0.00	
31													31												31	0.00	0.00	

\* Indicates sum of Hourly and Daily disagree.

### MAXIMUM SHORT DURATION PRECIPITATION (See Note)

Time Period (Minutes)	5	10	15	20	30	45	60	80	100	120	150	180
Precipitation (Inches)	0.46	0.72	0.74	0.76	0.76	0.76	0.76	0.77	0.77	0.77	0.77	0.77
Ending Date	19	19	19	19	19	19	19	11	11	11	11	11
Ending Time (Hr/Min)	1429	1431	1435	1441	1441	1441	1441	1214	1214	1214	1214	1214

Note : The hourly and daily precipitation totals are printed in the last 2 columns and hi-lighted in red when they disagree. NWS does not edit ASOS hourly values but may edit daily and monthly totals. Hourly, daily, and monthly totals are printed as reported by the ASOS site.

Date and time are not entered for TRACE amounts.

# REFERENCE NOTES & SUPPLEMENTAL SUMMARIES

\* = Extreme for the month (last occurrence if more than one).

T = Trace precipitation amount.

+ = also occurs on earlier date.

FG+ = Heavy fog, visibility .25 miles or less.

BLANK entries denote missing or unreported data.

Resultant wind is the vector sum of the wind speeds and directions divided by the number of observations.

Wind direction is recorded in tens of degrees (2 digits) clockwise from true north. '00' = calm, 'VR' = variable.

Precipitation is for the 24-hour period ending at the time indicated in the column heading.

Water Equivalent of snow on the ground is reported only when the depth is 2 or more inches.

NORMALS ARE FOR THE YEARS 1971-2000

## WEATHER NOTATIONS

QUALIFIER	WEATHER PHENOMENA		
DESCRIPTOR	PRECIPITATION	OBSCURATION	OTHER
BC Patches	DZ Drizzle	BR Mist	DS Duststorm
BL Blowing	GR Hail	DU Widespread Dust	FC Funnel Cloud
DR Low Drifting	GS Small Hail and/or Snow Pellets	FG Fog	+FC Tornado Waterspout
FZ Freezing	IC Ice Crystals	FU Smoke	PO Well-Developed Dust/Sand Whirls
MI Shallow	PL Ice Pellets	HZ Haze	
PR Partial	RA Rain	PY Spray	SQ Squalls
SH Shower(s)	SG Snow Grains	SA Sand	SS Sandstorm
TS Thunderstorm	SN Snow	VA Volcanic Ash	GL Glaze
VC In the Vicinity	UP Unkown Precipitation		

Intensity (as indicated on pages 4 to 6):  
'+' = Heavy    '' = Moderate    '-' = Light

# OAK RIDGE, TN AUGUST 2009

Ceilometer (30-second) data are used to derive cloudiness at or below 12,000 feet. This cloudiness is the mean cloud cover detected during sunrise to sunset (SR-SS), or midnight to midnight (MN-MN).

Satellite data are used to derive cloudiness above 12,000 feet. Effective Cloud Amount is based on the cloud cover and the transparency of the clouds within the satellite field of view (approx. 31x31 miles).

Sky Condition is based on the sum (not to exceed 8) of the sunrise to sunset cloud cover below and above 12,000 feet. Both ceilometer and satellite data must be present to compute Sky Condition. Clear = 0-2 oktas, Partly Cloudy = 3-6 oktas, Cloudy = 7-8 oktas.

A Heating (Cooling) Degree Day is the difference between the average daily temperature and 65 degrees F. The HDD season begins July 1, the CDD season begins January 1.

Dew Point is the temperature to which the air must be cooled to achieve 100% relative humidity. Wet Bulb is the temperature the air would have if cooled to saturation at constant pressure by evaporation of water into it.

Snow Depth, Snowfall, and Sunshine data may come from nearby sites that the National Weather Service deems Climatologically representative of this site.

### ADDITIONAL NOTES:

Station Augmentation-OAK RIDGE ATDD COOP  
Lat/Lon:36.00278/-84.24861 Elevation:905FT  
Distance:1.5 MI Dir:SW  
Augmented Elements:Temp,Precip,Snow  
Equipment:Pcpn-Model TRP525M, Temp Vaisala HMP35C,  
Snow Board, Snow Stick

Date	SUNSHINE		CLOUDINESS (OKTAS)				VISIBILITY (MILES)		RESERVED
	TOTAL MINUTES	PERCENT POSSIBLE	SR-SS		MN-MN		MINIMUM	MAXIMUM	
			Sky Cover	Satellite	Sky Cover	Satellite			
01							0.25	10.00	
02							2.50	10.00	
03							7.00	10.00	
04							1.00	10.00	
05							10.00	10.00	
06							1.75	10.00	
07							3.00	10.00	
08							0.25	10.00	
09							3.00	10.00	
10							3.00	10.00	
11							0.50	10.00	
12							1.25	10.00	
13							0.25	10.00	
14							5.00	10.00	
15							0.25	10.00	
16							0.25	10.00	
17							10.00	10.00	
18							1.00	10.00	
19							4.00	10.00	
20							0.75	10.00	
21							10.00	10.00	
22							9.00	10.00	
23							10.00	10.00	
24							9.00	10.00	
25							7.00	10.00	
26							0.25	10.00	
27							5.00	10.00	
28							2.50	10.00	
29							8.00	10.00	
30							2.50	10.00	
31							10.00	10.00	
MONTHLY AVGS							4.14	10.00	
<b>SUNSHINE (Minutes)</b>									
Total : 0					Possible :				
Percent Possible :									
<b>NUMBER OF DAYS WITH :</b>									
SKY CONDITION									
Clear		Partly CLDY		Cloudy		Missing			
<b>MINIMUM VISIBILITY (MILES)</b>									
<= .25			<= 3.0			>= 7.0			
6			18			10			



# OBSERVATIONS AT 3-HOURLY INTERVALS

# OAK RIDGE, TN AUGUST 2009

KOQT

WBAN # 53868

HOUR (LST)	SKY COVER	CEILING 100's of FT.	SATELLITE		VISIBILITY (MILES)	WEATHER	TEMPERATURE °F			WIND SPEED (MPH) DIRECTION Tens of Deg	PRESSURE (INCHES, HG)		
			Observation Time (LST)	Eff Cld Amt Oktas			DRY BULB	DEW POINT	WET BULB		RELATIVE HUMIDITY (PCT)	STATION	SEA LEVEL
<b>SUNRISE: 0553      AUG 13      SUNSET: 1931</b>													
01	FEW	002			7.00		68	67	67	97	3 13	29.09 30.02	
04	CLR	NC			6.00	BR	66	65	65	97	0 00	29.08 30.01	
07	VV	001			0.25	FG	66	66	66	100	0 00	29.13 30.06	
10	CLR	NC			10.00		78	68	71	71	5 VR	29.15 30.09	
13	CLR	NC			10.00		86	65	72	50	3 35	29.13 30.06	
16	CLR	NC			10.00		88	61	70	40	0 00	29.10 30.03	
19	CLR	NC			10.00		83	67	72	59	0 00	29.10 30.04	
22	CLR	NC			10.00		74	68	70	82	0 00	29.14 30.08	
<b>SUNRISE: 0554      AUG 14      SUNSET: 1929</b>													
01	CLR	NC			9.00		71	67	68	87	0 00	29.14 30.07	
04	CLR	NC			6.00	BR	69	67	68	93	0 00	29.16 30.09	
07	CLR	NC			5.00	BR	69	67	68	93	0 00	29.19 30.13	
10	CLR	NC			10.00		80	68	72	67	0 00	29.21 30.14	
13	SCT	040			10.00		85	67	73	55	0 00	29.18 30.11	
16	CLR	NC			10.00		90	64	73	42	0 00	29.14 30.07	
19	CLR	NC			10.00		85	67	73	55	0 00	29.14 30.07	
22	CLR	NC			10.00		75	69	71	82	0 00	29.17 30.10	
<b>SUNRISE: 0555      AUG 15      SUNSET: 1928</b>													
01	BKN	120			10.00		72	68	69	87	0 00	29.16 30.09	
04	CLR	NC			8.00		70	67	68	90	0 00	29.17 30.09	
07	VV	001			0.25	FG	69	68	68	97	0 00	29.22 30.15	
10	CLR	NC			10.00		80	70	73	72	0 00	29.24 30.17	
13	FEW	042			10.00		85	66	72	53	3 VR	29.20 30.13	
16	BKN	050			10.00		90	66	74	45	0 00	29.14 30.07	
19	CLR	NC			10.00		85	69	74	59	0 00	29.14 30.07	
22	CLR	NC			9.00		76	71	73	85	0 00	29.18 30.11	
<b>SUNRISE: 0556      AUG 16      SUNSET: 1927</b>													
01	CLR	NC			8.00		73	70	71	90	0 00	29.19 30.11	
04	CLR	NC			6.00	BR	70	69	69	97	0 00	29.20 30.12	
07	VV	001			0.25	FG	69	69	69	100	0 00	29.24 30.17	
10	SCT	022			10.00		80	68	72	67	3 27	29.26 30.19	
13	FEW	039			10.00		86	69	74	57	5 VR	29.22 30.14	
16	SCT	047			10.00		89	67	74	48	3 VR	29.16 30.09	
19	FEW	075			10.00		81	69	73	67	5 14	29.17 30.11	
22	SCT	120			10.00		76	70	72	82	0 00	29.23 30.16	
<b>SUNRISE: 0557      AUG 17      SUNSET: 1926</b>													
01	FEW	055			10.00		76	69	71	79	0 00	29.22 30.15	
04	CLR	NC			10.00		73	68	70	84	0 00	29.22 30.14	
07	SCT	032			10.00		71	68	69	90	0 00	29.26 30.19	
10	FEW	110			10.00		79	68	72	69	0 00	29.29 30.23	
13	SCT	035			10.00		84	68	73	59	0 00	29.27 30.19	
16	FEW	043			10.00		87	67	73	52	6 19	29.20 30.13	
19	CLR	NC			10.00		85	68	73	57	0 00	29.17 30.10	
22	OVC	075			10.00		78	69	72	74	0 00	29.24 30.16	
<b>SUNRISE: 0557      AUG 18      SUNSET: 1925</b>													
01	OVC	085			9.00	-RA	74	70	71	87	3 26	29.23 30.16	
04	CLR	NC			8.00		71	71	71	100	0 00	29.17 30.10	
07	OVC	075			8.00		71	70	70	97	0 00	29.21 30.14	
10	BKN	065			10.00		76	70	72	82	0 00	29.22 30.15	
13	BKN	060			10.00		82	70	74	67	6 20	29.18 30.11	
16	OVC	070			10.00		84	71	75	65	0 00	29.13 30.05	
19	BKN	085			10.00		82	71	74	69	5 18	29.10 30.03	
22	OVC	060			1.00	+RA BR	75	73	74	94	14 20	29.17 30.11	
<b>SUNRISE: 0558      AUG 19      SUNSET: 1923</b>													
01	OVC	090			10.00	-RA	73	71	72	93	5 VR	29.15 30.08	
04	CLR	NC			9.00		72	71	71	97	0 00	29.10 30.02	
07	CLR	NC			8.00		73	72	72	97	0 00	29.13 30.06	
10	BKN	015			10.00		79	73	75	82	6 25	29.14 30.07	
13	SCT	036			10.00		85	71	75	63	9 20	29.09 30.01	
16	BKN	015			10.00		80	74	76	82	0 00	29.07 29.99	
19	SCT	110			10.00		77	74	75	91	0 00	29.04 29.96	
22	FEW	070			10.00		73	71	72	93	0 00	29.10 30.02	
<b>SUNRISE: 0559      AUG 20      SUNSET: 1922</b>													
01	CLR	NC			10.00		71	70	70	97	0 00	29.06 29.98	
04	BKN	110			2.00	BR	70	69	69	97	0 00	29.03 29.96	
07	OVC	070			10.00		72	70	71	93	0 00	29.06 29.99	
10	OVC	015			10.00		76	73	74	90	6 VR	29.08 30.01	
13	SCT	080			10.00		83	71	75	67	8 19	29.04 29.96	
16	SCT	060			10.00		84	73	76	70	5 VR	28.99 29.91	
19	CLR	NC			10.00		73	70	71	90	0 00	28.99 29.92	
22	OVC	021			10.00		73	71	72	93	0 00	29.02 29.95	
<b>SUNRISE: 0560      AUG 21      SUNSET: 1921</b>													
01	OVC	009			10.00		72	70	71	93	5 21	29.04 29.96	
04	OVC	060			10.00		71	69	70	93	3 VR	29.03 29.95	
07	OVC	027			10.00		72	69	70	90	3 22	29.04 29.97	
10	BKN	019			10.00		77	69	72	76	6 22	29.05 29.98	
13	OVC	065			10.00		78	69	72	74	3 23	29.03 29.96	
16	SCT	065			10.00		81	68	72	65	3 VR	28.96 29.88	
19	CLR	NC			10.00		79	69	72	72	3 22	28.94 29.86	
22	SCT	100			10.00		74	71	72	90	0 00	28.98 29.90	
<b>SUNRISE: 0601      AUG 22      SUNSET: 1920</b>													
01	SCT	100			10.00		72	70	71	93	0 00	28.94 29.87	
04	OVC	090			10.00		72	70	71	93	0 00	28.94 29.86	
07	OVC	070			10.00		70	67	68	90	0 00	28.97 29.89	
10	FEW	080			10.00		78	61	67	56	0 00	28.98 29.90	
13	CLR	NC			10.00		82	57	66	43	5 VR	28.94 29.86	
16	BKN	095			10.00		79	60	67	52	6 31	28.92 29.85	
19	OVC	120			10.00		74	57	64	56	3 33	28.95 29.88	
22	BKN	100			10.00		69	59	63	71	3 33	29.00 29.93	
<b>SUNRISE: 0601      AUG 23      SUNSET: 1918</b>													
01	CLR	NC			10.00		63	59	61	87	0 00	29.00 29.93	
04	CLR	NC			10.00		61	58	59	90	0 00	28.98 29.91	
07	FEW	039			10.00		61	59	60	93	0 00	29.02 29.96	
10	BKN	038			10.00		72	60	65	66	5 VR	29.04 29.98	
13	OVC	060			10.00		75	60	66	60	7 VR	29.04 29.98	
16	BKN	041			10.00		77	59	66	54	7 VR	29.02 29.96	
19	BKN	080			10.00		73	59	64	62	3 VR	29.04 29.98	
22	OVC	080			10.00		69	60	64	73	0 00	29.07 30.01	
<b>SUNRISE: 0602      AUG 24      SUNSET: 1917</b>													
01	CLR	NC			10.00		67	60	63	78	3 07	29.09 30.02	
04	CLR	NC			10.00		63	60	61	90	0 00	29.08 30.02	
07	CLR	NC			9.00		63	60	61	90	0 00	29.12 30.06	
10	CLR	NC			10.00		75	62	67	64	5 VR	29.14 30.08	
13	CLR	NC			10.00		82	64	70	55	9 06	29.13 30.05	
16	CLR	NC			10.00		84	63	70	49	5 VR	29.10 30.03	
19	CLR	NC			10.00		77	63	68	62	0 00	29.10 30.04	
22	CLR	NC			10.00		71	64	67	79	3 06	29.13 30.07	

# OBSERVATIONS AT 3-HOURLY INTERVALS

# OAK RIDGE, TN

AUGUST 2009

KOQT

WBAN # 53868

HOUR (LST)	SKY COVER	CEILING 100's of FT.	SATELLITE		WEATHER	TEMPERATURE °F			WIND SPEED (MPH) DIRECTION Tens of Deg	PRESSURE (INCHES, HG)		
			Observation Time (LST)	Eff Clد Amt Oktas		DRY BULB	DEW POINT	WET BULB		RELATIVE HUMIDITY (PCT)	STATION	SEA LEVEL
<b>SUNRISE: 0603      AUG 25      SUNSET: 1916</b>												
01	OVC	065				70	64	66	81	0 00	29.15	30.09
04	FEW	075				67	63	65	87	0 00	29.15	30.09
07	CLR	NC				66	63	64	90	0 00	29.18	30.13
10	CLR	NC				77	66	70	69	6 06	29.20	30.14
13	FEW	110				85	61	70	45	5 21	29.17	30.10
16	OVC	090				84	64	71	51	0 00	29.13	30.06
19	CLR	NC				81	69	73	67	0 00	29.12	30.05
22	CLR	NC				72	69	70	90	0 00	29.15	30.08
<b>SUNRISE: 0604      AUG 26      SUNSET: 1914</b>												
01	CLR	NC				69	67	68	93	0 00	29.16	30.09
04	VV	001			BR FG	66	66	66	100	0 00	29.17	30.10
07	VV	001			FG	67	67	67	100	0 00	29.21	30.15
10	CLR	NC				76	68	71	76	3 14	29.21	30.15
13	CLR	NC				86	62	70	45	5 26	29.17	30.10
16	SCT	055				89	63	72	42	0 00	29.13	30.05
19	CLR	NC				82	71	74	69	0 00	29.13	30.05
22	CLR	NC				73	68	70	84	0 00	29.15	30.08
<b>SUNRISE: 0604      AUG 27      SUNSET: 1913</b>												
01	FEW	110				70	67	68	90	0 00	29.14	30.07
04	CLR	NC			BR	68	66	67	93	0 00	29.13	30.05
07	BKN	110			BR	68	67	67	97	0 00	29.15	30.09
10	FEW	095				75	66	69	74	0 00	29.16	30.10
13	FEW	050				80	67	71	65	7 05	29.14	30.07
16	CLR	NC				72	67	69	84	0 00	29.12	30.05
19	CLR	NC				70	68	69	93	0 00	29.13	30.07
22	BKN	120			BR	69	68	68	97	0 00	29.12	30.05
<b>SUNRISE: 0605      AUG 28      SUNSET: 1912</b>												
01	CLR	NC				68	67	67	97	0 00	29.09	30.02
04	CLR	NC				67	67	67	100	0 00	29.09	30.02
07	OVC	060			-RA BR	67	67	67	100	0 00	29.09	30.03
10	BKN	005				72	69	70	90	3 08	29.09	30.03
13	FEW	016				77	67	70	71	3 VR	29.03	29.96
16	FEW	030				79	66	70	65	6 19	28.98	29.91
19	CLR	NC				77	68	71	74	0 00	28.95	29.88
22	BKN	065			-RA	72	67	69	84	0 00	28.96	29.89
<b>SUNRISE: 0606      AUG 29      SUNSET: 1910</b>												
01	CLR	NC				70	67	68	90	0 00	28.94	29.87
04	OVC	095				69	66	67	90	0 00	28.93	29.86
07	OVC	012				70	68	69	93	3 VR	28.95	29.88
10	BKN	085				75	67	70	76	7 21	28.95	29.88
13	BKN	044				78	69	72	74	8 19	28.94	29.87
16	FEW	022				81	69	73	67	9 19	28.90	29.82
19	FEW	043				78	70	73	77	0 00	28.92	29.85
22	OVC	047				72	69	70	90	0 00	28.98	29.91
<b>SUNRISE: 0607      AUG 30      SUNSET: 1909</b>												
01	CLR	NC				69	67	68	93	0 00	29.00	29.93
04	FEW	002			BR	65	64	64	97	0 00	29.01	29.94
07	CLR	NC			BR	64	63	63	97	0 00	29.05	29.99
10	CLR	NC				74	63	67	69	6 07	29.08	30.01
13	CLR	NC				78	63	68	60	3 VR	29.05	29.98
16	OVC	070				79	61	68	54	6 06	29.03	29.96
19	CLR	NC				74	60	65	62	3 VR	29.05	29.99
22	CLR	NC				69	56	61	63	0 00	29.09	30.03

HOUR (LST)	SKY COVER	CEILING 100's of FT.	SATELLITE		WEATHER	TEMPERATURE °F			WIND SPEED (MPH) DIRECTION Tens of Deg	PRESSURE (INCHES, HG)		
			Observation Time (LST)	Eff Clد Amt Oktas		DRY BULB	DEW POINT	WET BULB		RELATIVE HUMIDITY (PCT)	STATION	SEA LEVEL
<b>SUNRISE: 0608      AUG 31      SUNSET: 1908</b>												
01	CLR	NC				65	55	59	70	3 06	29.10	30.03
04	CLR	NC				62	56	59	81	0 00	29.10	30.04
07	CLR	NC				61	56	58	84	0 00	29.13	30.09
10	CLR	NC				72	58	64	62	5 VR	29.15	30.10
13	CLR	NC				80	60	67	51	5 10	29.13	30.06
16	CLR	NC				82	60	68	47	6 01	29.10	30.03
19	CLR	NC				73	58	64	59	0 00	29.12	30.06
22	FEW	070				67	57	61	70	0 00	29.16	30.11

## 3-HOURLY OBSERVATION NOTES

Sky Cover is the amount of the sky obscured. CLR or SKC = 0, FEW = 1/8-2/8, SCT = 3/8-4/8, BKN = 5/8-7/8, OVC = 8/8, W = Vertical Visibility = 8/8

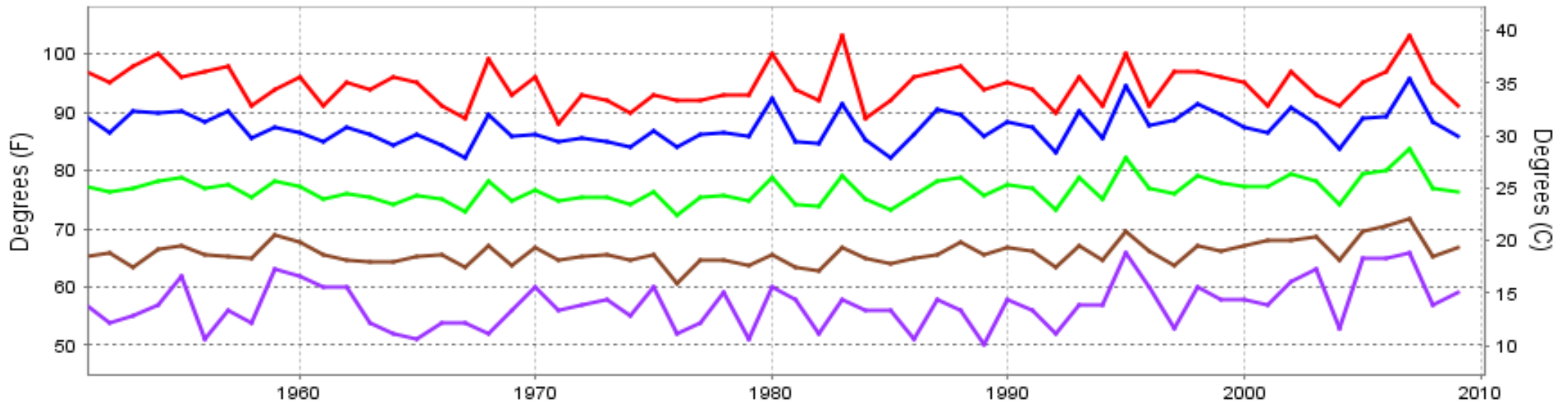
Ceiling is reported in hundreds of feet above ground level for clouds at or below 12,000 feet. NC = No Ceiling detected.

& = Original observation contained additional weather elements. See page 3 for additional notes.

## SUMMARY BY HOUR

HOUR (LST)	AVERAGES								RESULTANT WIND (MPH)		
	CEILOMETER	EFF CLD AMT	DRY BULB	DEW POINT	WET BULB	RELATIVE HUMIDITY	PRESSURE (Inches, HG)		WIND SPEED (MPH)	DIRECTION	
						STATION	SEA LEVEL	VISIBILITY (Miles)			
01			70	67	69	90	29.11	30.04	8.68	1	14
02			70	67	68	92	29.10	30.03	7.87	0	23
03			69	67	68	92	29.10	30.02	7.81	0	xx
04			68	67	67	94	29.10	30.03	6.89	0	xx
05			68	66	67	94	29.11	30.04	6.86	0	xx
06			68	66	67	95	29.12	30.05	6.48	0	xx
07			68	67	67	94	29.13	30.07	6.31	0	xx
08			71	67	69	89	29.14	30.07	7.86	1	12
09			74	68	70	81	29.14	30.08	9.55	3	0
10			77	68	71	72	29.14	30.08	9.97	3	0
11			80	68	72	68	29.14	30.07	9.56	4	2
12			81	67	72	63	29.13	30.06	9.66	5	1
13			83	67	72	59	29.12	30.05	10.00	5	0
14			83	66	72	57	29.11	30.03	10.00	4	2
15			84	66	72	57	29.09	30.02	9.94	4	2
16			84	66	72	55	29.08	30.00	10.00	4	1
17			83	66	72	59	29.08	30.00	9.28	4	0
18			81	66	71	61	29.08	30.01	9.69	4	1
19			79	67	71	67	29.08	30.01	10.00	2	1
20			76	68	71	75	29.09	30.02	9.74	1	1
21			74	68	70	81	29.10	30.03	9.52	1	xx
22			73	68	70	85	29.11	30.04	9.06	1	xx
23			72	68	69	86	29.11	30.04	9.10	0	xx
24			71	67	69	88	29.11	30.04	8.90	1	1

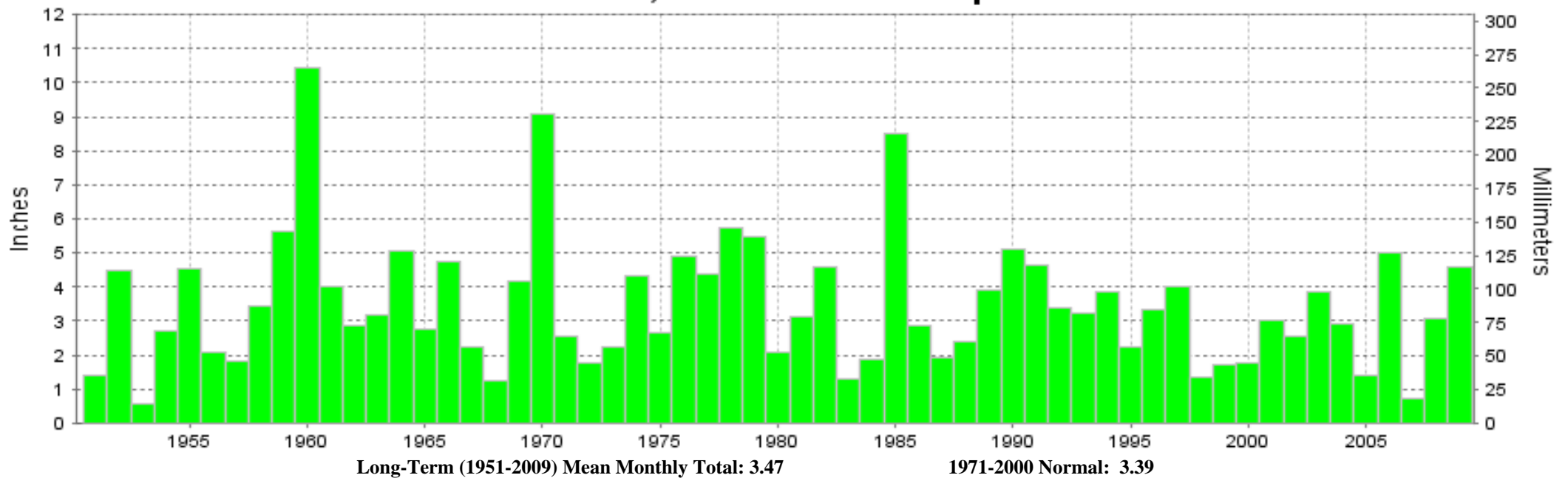
## OAK RIDGE, TN AUGUST Temperatures



— Extreme Max — Mean Max — Mean — Mean Min — Extreme Min

Long-Term (1951-2009) Mean: 76.6  
1971-2000 Normal: 76.2

## OAK RIDGE, TN AUGUST Precipitation



Long-Term (1951-2009) Mean Monthly Total: 3.47

1971-2000 Normal: 3.39



AUGUST 2009  
OAK RIDGE, TN

## LOCAL CLIMATOLOGICAL DATA NOAA, National Climatic Data Center

*I certify that this is an official publication of the National Oceanic and Atmospheric Administration (NOAA). It is compiled using information from weather observing sites operated by NOAA-National Weather Service / Department Of Transportation-Federal Aviation Administration and received at the National Climatic Data Center (NCDC), Asheville, North Carolina 28801.*

DIRECTOR

NCDC now offers an annual online subscription for the **Edited Local Climatological Data Publication**. When you purchase this subscription service, you will have **immediate online access** to all previous publications back to July 1996 and all publications thereafter until the expiration of the subscription. Your subscription is valid for one year after purchase. **The total cost for online delivery (including back issues) is significantly less than the cost for offline delivery.**

To order this and other subscriptions online with your credit card, go to: [www.ncdc.noaa.gov](http://www.ncdc.noaa.gov) and choose subscriptions.

We welcome your questions or comments, please contact us at:

Toll Free Number (866) 742-3322 (voice)

Fax Number : (304) 726-4409

TDD : (828) 271-4010

or Email : [ncdc.info@noaa.gov](mailto:ncdc.info@noaa.gov)

Local Climatological Data is available at [www.ncdc.noaa.gov](http://www.ncdc.noaa.gov)

NCDC Subscription Services Center  
310 State Route 956 Building 300  
Rocket Center, WV 26726  
OFFICIAL BUSINESS, PENALTY FOR PRIVATE USE \$300

FIRST CLASS  
POSTAGE AND FEES PAID  
NOAA  
PERMIT G-19

For address correction, please return a photocopy of this page to Subscription Services indicating changes