



SEPTEMBER 2009 LOCAL CLIMATOLOGICAL DATA

NOAA, National Climatic Data Center

OAK RIDGE, TN
OAK RIDGE (KOQT)
Lat:36° 1' N Long: 84° 14' W Elev (Ground) 913 Feet
Time Zone : EASTERN WBAN: 53868 ISSN#: 0198-487X



Date 1	Temperature °F						Deg Days BASE 65°		WEATHER 10	SNOW/ICE ON GND(IN)		PRECIPITATION ON GND(IN)		PRESSURE (INCHES OF HG)		WIND SPEED = MPH DIR = TENS OF DEGREES								Date 24
	MAXIMUM 2	MINIMUM 3	AVERAGE 4	DEP FROM NORMAL 5	AVERAGE DEW PT 6	AVERAGE WET BULB 7	HEATING 8	COOLING 9		LST 11	LST 12	LST 13	LST 14	AVERAGE STATION 15	AVERAGE SEA LEVEL 16	RESULTANT SPEED 17	RES DIR 18	AVERAGE SPEED 19	MAXIMUM					
																			3-SEC		2-MIN			
2	3	4	5	6	7	8	9	11	12	13	14	15	16	17	18	19	20	21	22	23				
01	80	62	71	-3	62	65	0	6				0.00	29.18	30.13	0.6	04	1.0	12	07	8	01	01		
02	78	65	72	-2	64	66	0	7	RA BR			0.04	29.19	30.14	1.1	07	2.2	12	01	8	07	02		
03	77	64	71	-3	64	66	0	6	RA BR			0.01	29.13	30.08	0.1	22	0.6	10	26	6	25	03		
04	84	64	74	1	64	67	0	9	FG+ FG BR			0.00	29.11	30.06	0.4	19	0.6	10	20	7	21	04		
05	85	62	74	1	65	67	0	9	FG BR			0.00	29.18	30.13	0.3	03	0.7	9	07	6	17	05		
06	79	69	74	1	68	70	0	9	RA BR			0.03	29.21	30.15	0.7	08	1.0	9	08	6	07	06		
07	83	66	75	2	67	68	0	10	RA BR			0.01	29.13	30.07	0.2	01	1.2	13	29	8	26	07		
08	83	65	74	2	66	68	0	9	FG+ FG BR HZ			0.00	29.07	30.01	0.6	19	1.7	12	22	8	27	08		
09	84	65	75	3	66	68	0	10	FG+ FG BR			0.00	29.09	30.04	0.3	06	0.8	14	07	8	07	09		
10	82	62	72	0	64	66	0	7	RA FG BR			0.15	29.16	30.12	0.5	17	1.1	15	12	8	14	10		
11	80	66	73	1	66	67	0	8	RA FG BR			0.01	29.18	30.11	0.5	19	1.2	10	20	8	20	11		
12	83	65	74	3	64	67	0	9	BR HZ			0.00	29.08	30.02	0.6	02	1.3	12	07	8	06	12		
13	83	61	72	1	61	64	0	7				0.00	29.05	30.00	1.4	05	1.9	13	05	8	05	13		
14	85	61	73	2	64	67	0	8				0.00	29.07	30.00	0.4	21	1.2	12	21	8	19	14		
15	75	68	72	2	67	69	0	7	RA BR			0.14	29.05	29.99	0.6	06	0.8	12	06	7	06	15		
16	73	68	71	1	68	69	0	6	RA BR			0.76	29.05	30.00	0.3	06	0.3	8	07	6	08	16		
17	76	69	73	3	69	70	0	8	RA BR			0.80	29.08	30.02	1.4	06	1.4	8	06	7	06	17		
18	83	68	76	6	68	69	0	11	RA BR			0.01	29.11	30.05	0.6	08	1.1	22	13	15	14	18		
19	76	68	72	3	69	70	0	7	RA BR			0.01	29.15	30.10	0.7	07	1.0	12	09	9	09	19		
20	75	69	72	3	69	70	0	7	RA FG+ FG BR			0.59	29.16	30.10	0.3	09	0.3	8	08	6	09	20		
21	74	69	72	4	69	70	0	7	RA FG+ BR			0.42	29.15	30.10			0.0	7	20	5	21	21		
22	83	67	75	7	69	70	0	10	RA FG+ FG BR			0.01	29.17	30.12	0.5	21	0.6	10	22	7	20	22		
23	85	69	77	9	69	71	0	12	FG+ BR			0.00	29.18	30.12	0.3	11	0.4	8	08	5	35	23		
24	86*	71	79*	12	71	73	0	14				0.00	29.15	30.07	1.0	22	1.5	10	26	7	18	24		
25	85	70	78	11	71	72	0	13	RA BR			0.33	29.13	30.06	0.3	14	1.2	10	19	7	17	25		
26	72	67	70	3	67	68	0	5	RA FG BR			2.06	29.03	29.95	0.9	12	1.9	15	20	8	22	26		
27	76	58	67	1	58	61	0	2	RA BR			0.10	28.87	29.82	2.5	25	3.5	18	26	13	27	27		
28	76	53	65	-1	48	56	0	0	RA			T	28.84	29.80	4.1	27	5.0	28*	29	17*	26	28		
29	67	47*	57*	-8	44	51	8	0				0.00	29.01	29.99	2.1	28	3.5	22	25	14	26	29		
30	67	50	59	-6	48	52	6	0				0.00	29.11	30.09	1.3	05	2.3	16	07	10	07	30		

79.2	64.3	71.8	☼	64.3	66.6	0.5	7.4	< MONTHLY AVERAGES TOTALS >				5.48	29.10	30.05	0.0	34	1.4	< MONTHLY AVERAGES			
-1.9	5.5	1.8		-----DEPARTURE FROM NORMAL -----				1.73	SUNSHINE, CLOUD, & VISIBILITY TABLES ON PAGE 3												
DEGREE DAYS								GREATEST 24-HR PRECIPITATION : 2.16 DATE : 26-27				SEA LEVEL PRESSURE				DATE TIME					
MONTHLY				SEASON TO DATE				GREATEST 24-HR SNOWFALL :				MAXIMUM :				30.21 06 1208					
TOTAL DEPARTURE				TOTAL DEPARTURE				GREATEST SNOW DEPTH :				MINIMUM :				29.73 28 0506					
HEATING :		14 -16		14 -16		NUMBER OF ->		MAXIMUM TEMP >= 90 : 0		MINIMUM TEMP <= 32 : 0		PRECIPITATION >= 0.01 INCH : 17									
COOLING :		223 43		1416 139		DAYS WITH		MAXIMUM TEMP <= 32 : 0		MINIMUM TEMP <= 0 : 0		PRECIPITATION >= 0.10 INCH : 9									
								THUNDERSTORMS : 0		HEAVY FOG : 7		SNOWFALL >= 1.0 INCH :									

SEPTEMBER 2009
OAK RIDGE, TN

HOURLY PRECIPITATION

(WATER EQUIVALENT IN INCHES)

OAK RIDGE, TN (KOQT)
SEPTEMBER 2009

WBAN # 53868

Date	FOR HOUR (LST) ENDING AT												Date	FOR HOUR (LST) ENDING AT												Date	Sum of Hourly Data	2400 LST Water Equiv.
	1	2	3	4	5	6	7	8	9	10	11	12		13	14	15	16	17	18	19	20	21	22	23	24			
01													01												01	0.00	0.00	
02			T	T	T	0.01	0.01	0.02	T				02												02	0.04	0.04	
03													03		T	0.01	T								03	0.01	0.01	
04													04												04	0.00	0.00	
05													05												05	0.00	0.00	
06													06	T	T										06	0.03	0.03	
07		0.01	T			T	0.01	0.01	0.01	T	T	T	07				T	T							07	0.01	0.01	
08													08												08	0.00	0.00	
09													09												09	0.00	0.00	
10													10							0.03	0.09		0.03	10	0.15	0.15		
11	0.01									T	T		11											11	0.01	0.01		
12													12											12	0.00	0.00		
13													13											13	0.00	0.00		
14													14											14	0.00	0.00		
15											T	T	15	0.06	0.06	0.01	0.01							15	0.14	0.14		
16						0.05	0.15	T	0.03	0.01	0.16	0.03	16	0.09	0.13	0.05	T	T	0.01	0.04	T		T	0.01	16	0.76	0.76	
17		T	0.49	0.01	T	T					T	T	17	T	0.03	0.05	0.02	0.05	0.10	0.02	0.03	T			17	0.80	0.80	
18													18							0.01					18	0.01	0.01	
19													19				T	0.01	T					19	0.01	0.01		
20		T							T	0.12	0.01	0.02	0.17	20	0.03	0.10	0.03	T	T	0.01	0.05	0.02	T		0.03	20	0.59	0.59
21	0.07	0.06	T	T	0.02	0.01	T	0.06	T			0.01	21	0.02	T	T	T	0.07	0.10	T				21	0.42	0.42		
22										0.01			22											22	0.01	0.01		
23													23											23	0.00	0.00		
24													24											24	0.00	0.00		
25								0.33	T				25			T	T	T	T					25	0.33	0.33		
26									T	0.02	0.47	0.02	0.12	0.26	26	0.52	0.37	0.19	0.06	0.03	T			26	2.06	2.06		
27	T	T	0.10										27											27	0.10	0.10		
28						T		T	T				28											28	T	T		
29													29											29	0.00	0.00		
30													30											30	0.00	0.00		

* Indicates sum of Hourly and Daily disagree.

MAXIMUM SHORT DURATION PRECIPITATION (See Note)

Time Period (Minutes)	5	10	15	20	30	45	60	80	100	120	150	180
Precipitation (Inches)	0.14	0.20	0.25	0.30	0.39	0.48	0.53	0.65	0.80	0.90	1.05	1.18
Ending Date	17	17	17	17	17	17	26	26	26	26	26	26
Ending Time (Hr/Min)	0233	0238	0242	0249	0253	0253	1302	1328	1342	1356	1342	1413

Note : The hourly and daily precipitation totals are printed in the last 2 columns and hi-lighted in red when they disagree. NWS does not edit ASOS hourly values but may edit daily and monthly totals. Hourly, daily, and monthly totals are printed as reported by the ASOS site.

Date and time are not entered for TRACE amounts.

REFERENCE NOTES & SUPPLEMENTAL SUMMARIES

* = Extreme for the month (last occurrence if more than one).

T = Trace precipitation amount.

+ = also occurs on earlier date.

FG+ = Heavy fog, visibility .25 miles or less.

BLANK entries denote missing or unreported data.

Resultant wind is the vector sum of the wind speeds and directions divided by the number of observations.

Wind direction is recorded in tens of degrees (2 digits) clockwise from true north. '00' = calm, 'VR' = variable.

Precipitation is for the 24-hour period ending at the time indicated in the column heading.

Water Equivalent of snow on the ground is reported only when the depth is 2 or more inches.

NORMALS ARE FOR THE YEARS 1971-2000

WEATHER NOTATIONS

QUALIFIER	WEATHER PHENOMENA		
DESCRIPTOR	PRECIPITATION	OBSCURATION	OTHER
BC Patches	DZ Drizzle	BR Mist	DS Duststorm
BL Blowing	GR Hail	DU Widespread Dust	FC Funnel Cloud
DR Low Drifting	GS Small Hail and/or Snow Pellets	FG Fog	+FC Tornado Waterspout
FZ Freezing	IC Ice Crystals	FU Smoke	PO Well-Developed Dust/Sand Whirls
MI Shallow	PL Ice Pellets	HZ Haze	
PR Partial	RA Rain	PY Spray	SQ Squalls
SH Shower(s)	SG Snow Grains	SA Sand	SS Sandstorm
TS Thunderstorm	SN Snow	VA Volcanic Ash	GL Glaze
VC In the Vicinity	UP Unkown Precipitation		

Intensity (as indicated on pages 4 to 6):
'+' = Heavy '' = Moderate '-' = Light

OAK RIDGE, TN SEPTEMBER 2009

Ceilometer (30-second) data are used to derive cloudiness at or below 12,000 feet. This cloudiness is the mean cloud cover detected during sunrise to sunset (SR-SS), or midnight to midnight (MN-MN).

Satellite data are used to derive cloudiness above 12,000 feet. Effective Cloud Amount is based on the cloud cover and the transparency of the clouds within the satellite field of view (approx. 31x31 miles).

Sky Condition is based on the sum (not to exceed 8) of the sunrise to sunset cloud cover below and above 12,000 feet. Both ceilometer and satellite data must be present to compute Sky Condition. Clear = 0-2 oktas, Partly Cloudy = 3-6 oktas, Cloudy = 7-8 oktas.

A Heating (Cooling) Degree Day is the difference between the average daily temperature and 65 degrees F. The HDD season begins July 1, the CDD season begins January 1.

Dew Point is the temperature to which the air must be cooled to achieve 100% relative humidity. Wet Bulb is the temperature the air would have if cooled to saturation at constant pressure by evaporation of water into it.

Snow Depth, Snowfall, and Sunshine data may come from nearby sites that the National Weather Service deems Climatologically representative of this site.

ADDITIONAL NOTES:

Station Augmentation-OAK RIDGE ATDD COOP
Lat/Lon:36.00278/-84.24861 Elevation:905FT
Distance:1.5 MI Dir:SW
Augmented Elements:Temp,Precip,Snow
Equipment:Pcpn-Model TRP525M, Temp Vaisala HMP35C,
Snow Board, Snow Stick

Date	SUNSHINE		CLOUDINESS (OKTAS)				VISIBILITY (MILES)		RESERVED
	TOTAL MINUTES	PERCENT POSSIBLE	SR-SS		MN-MN		MINIMUM	MAXIMUM	
			Sky Cover	Satellite	Sky Cover	Satellite			
01							10.00	10.00	
02							4.00	10.00	
03							2.00	10.00	
04							0.25	10.00	
05							2.00	10.00	
06							4.00	10.00	
07							3.00	10.00	
08							0.25	10.00	
09							0.25	10.00	
10							0.50	10.00	
11							1.75	10.00	
12							3.00	10.00	
13							10.00	10.00	
14							8.00	10.00	
15							1.75	10.00	
16							2.50	9.00	
17							1.75	10.00	
18							0.75	10.00	
19							3.00	10.00	
20							0.25	10.00	
21							0.25	10.00	
22							0.25	10.00	
23							0.25	10.00	
24							7.00	10.00	
25							1.75	10.00	
26							0.50	10.00	
27							10.00	10.00	
28							10.00	10.00	
29							10.00	10.00	
30							7.00	10.00	
MONTHLY AVGS							3.53	9.97	
SUNSHINE (Minutes)									
Total : 0					Possible :				
Percent Possible :									
NUMBER OF DAYS WITH :									
SKY CONDITION									
Clear		Partly CLDY			Cloudy			Missing	
MINIMUM VISIBILITY (MILES)									
<= .25			<= 3.0				>= 7.0		
7			20				8		

OBSERVATIONS AT 3-HOURLY INTERVALS

OAK RIDGE, TN

SEPTEMBER 2009 KOQT

WBAN # 53868

HOUR (LST)	SKY COVER	CEILING 100's of FT.	SATELLITE		WEATHER	TEMPERATURE °F			WIND SPEED (MPH) DIRECTION Tens of Deg	PRESSURE (INCHES, HG)		HOUR (LST)	SKY COVER	CEILING 100's of FT.	SATELLITE		WEATHER	TEMPERATURE °F			WIND SPEED (MPH) DIRECTION Tens of Deg	PRESSURE (INCHES, HG)								
			Observation Time (LST)	Eff Cld Amt Oktas		VISIBILITY (MILES)	DRY BULB	DEW POINT		WET BULB	RELATIVE HUMIDITY (PCT)				STATION	SEA LEVEL		DRY BULB	DEW POINT	WET BULB		RELATIVE HUMIDITY (PCT)	STATION	SEA LEVEL						
																									Observation Time (LST)	Eff Cld Amt Oktas	VISIBILITY (MILES)	DRY BULB	DEW POINT	WET BULB
SUNRISE: 0608 SEP 01						SUNSET: 1906						SUNRISE: 0613 SEP 07						SUNSET: 1856												
01	FEW	046				65	57	60	75	0	00	29.17	30.11	01	CLR	NC				7.00			69	68	68	97	0	00	29.18	30.13
04	BKN	100				63	58	60	84	0	00	29.17	30.11	04	BKN	110				4.00	BR		69	68	68	97	0	00	29.16	30.10
07	OVC	030				65	59	61	81	0	00	29.20	30.15	07	OVC	110				3.00	BR		69	68	68	97	3	07	29.16	30.11
10	BKN	045				73	62	66	69	3	VR	29.22	30.17	10	BKN	050				10.00			75	68	70	79	0	00	29.17	30.11
13	BKN	050				76	63	68	64	0	00	29.20	30.15	13	BKN	085				10.00			80	64	70	58	5	25	29.13	30.06
16	BKN	034				78	64	69	62	0	00	29.16	30.11	16	CLR	NC				10.00			77	66	70	69	0	00	29.09	30.02
19	OVC	100				75	65	69	71	0	00	29.15	30.10	19	CLR	NC				10.00			72	66	68	82	0	00	29.08	30.01
22	OVC	100				70	64	66	81	0	00	29.18	30.13	22	CLR	NC				8.00			68	66	67	93	0	00	29.08	30.02
SUNRISE: 0609 SEP 02						SUNSET: 1905						SUNRISE: 0614 SEP 08						SUNSET: 1855												
01	OVC	100				70	64	66	81	0	00	29.20	30.14	01	CLR	NC				7.00			67	65	66	93	0	00	29.10	30.03
04	OVC	100				67	65	66	93	3	24	29.21	30.15	04	VV	001				0.25	FG		66	66	66	100	3	06	29.08	30.01
07	OVC	075			-RA BR	66	65	65	97	0	00	29.24	30.18	07	OVC	003				2.00	BR		66	66	66	100	0	00	29.10	30.04
10	SCT	085				68	66	67	93	6	07	29.25	30.20	10	OVC	007				5.00	BR		70	66	67	87	0	00	29.12	30.06
13	FEW	100				74	63	67	69	0	00	29.20	30.14	13	CLR	NC				10.00			80	67	71	65	6	20	29.09	30.02
16	FEW	100				76	63	68	64	6	08	29.17	30.12	16	CLR	NC				10.00			82	62	69	51	6	22	29.02	29.95
19	CLR	NC				73	64	67	74	0	00	29.13	30.08	19	SCT	120				10.00			77	67	70	71	0	00	29.03	29.96
22	SCT	065				67	64	65	90	0	00	29.15	30.10	22	SCT	070				8.00			71	68	69	90	0	00	29.08	30.01
SUNRISE: 0610 SEP 03						SUNSET: 1903						SUNRISE: 0615 SEP 09						SUNSET: 1853												
01	OVC	055				67	64	65	90	0	00	29.15	30.09	01	CLR	NC				6.00	BR		68	67	67	97	0	00	29.08	30.01
04	OVC	041				66	65	65	97	0	00	29.15	30.09	04	VV	002				0.25	FG		66	66	66	100	0	00	29.09	30.02
07	OVC	003			BR	65	63	64	93	0	00	29.17	30.12	07	OVC	085				5.00	BR		65	65	65	100	0	00	29.13	30.06
10	BKN	055				70	62	65	76	0	00	29.19	30.14	10	BKN	090				10.00			73	66	68	79	0	00	29.13	30.08
13	SCT	060				75	62	67	64	3	20	29.14	30.09	13	SCT	043				10.00			82	65	71	56	3	22	29.10	30.03
16	CLR	NC				76	63	68	64	0	00	29.10	30.03	16	CLR	NC				10.00			83	67	72	59	5	08	29.06	29.99
19	BKN	110				73	65	68	76	0	00	29.08	30.02	19	CLR	NC				10.00			76	67	70	74	0	00	29.09	30.02
22	BKN	120				68	65	66	90	0	00	29.10	30.05	22	CLR	NC				10.00			71	65	67	81	0	00	29.13	30.07
SUNRISE: 0611 SEP 04						SUNSET: 1902						SUNRISE: 0615 SEP 10						SUNSET: 1852												
01	BKN	110				67	65	66	93	0	00	29.10	30.04	01	CLR	NC				8.00			65	63	64	93	0	00	29.13	30.06
04	SCT	095			BR	65	64	64	97	0	00	29.10	30.04	04	OVC	002				2.00	BR		62	62	62	100	0	00	29.14	30.08
07	OVC	001			BR	65	64	64	97	0	00	29.13	30.08	07	OVC	001				0.75	BR		63	63	63	100	0	00	29.19	30.14
10	CLR	NC				74	66	69	76	5	15	29.15	30.09	10	FEW	085				10.00			71	64	67	79	0	00	29.21	30.15
13	SCT	040				79	63	69	58	3	19	29.13	30.06	13	OVC	039				10.00			78	63	68	60	3	15	29.18	30.13
16	BKN	049				83	60	68	46	0	00	29.10	30.03	16	BKN	085				10.00			79	64	69	60	0	00	29.14	30.09
19	CLR	NC				76	66	69	71	0	00	29.10	30.04	19	CLR	NC				10.00			71	66	68	84	0	00	29.16	30.11
22	CLR	NC				68	64	65	87	0	00	29.14	30.08	22	BKN	075				7.00	-RA		68	67	67	97	0	00	29.21	30.15
SUNRISE: 0611 SEP 05						SUNSET: 1859						SUNRISE: 0616 SEP 11						SUNSET: 1850												
01	CLR	NC				65	63	64	93	0	00	29.15	30.09	01	OVC	044				5.00	BR		67	66	66	97	0	00	29.21	30.14
04	FEW	065				64	62	63	93	0	00	29.16	30.10	04	OVC	039				4.00	BR		67	66	66	97	0	00	29.20	30.14
07	OVC	001			BR	63	62	62	97	0	00	29.21	30.15	07	OVC	003				3.00	BR		66	66	66	100	0	00	29.21	30.16
10	CLR	NC				76	61	67	60	5	VR	29.23	30.17	10	BKN	036				10.00			68	65	66	90	0	00	29.22	30.17
13	CLR	NC				81	65	70	58	0	00	29.20	30.14	13	OVC	030				10.00			74	64	68	71	0	00	29.17	30.12
16	BKN	075				83	65	71	55	0	00	29.16	30.10	16	FEW	030				10.00			79	65	70	62	6	VR	29.12	30.05
19	CLR	NC				77	68	71	74	0	00	29.16	30.11	19	SCT	120				9.00			75	67	70	76	0	00	29.12	30.05
22	CLR	NC				72	68	69	87	0	00	29.21	30.15	22	OVC	032				7.00			70	67	68	90	0	00	29.13	30.08
SUNRISE: 0612 SEP 06						SUNSET: 1858						SUNRISE: 0617 SEP 12						SUNSET: 1849												
01	OVC	110				71	69	70	93	0	00	29.20	30.14	01	OVC	110				7.00			69	66	67	90	0	00	29.13	30.06
04	OVC	100				70	68	69	93	0	00	29.18	30.11	04	OVC	100				6.00	BR		67	66	66	97	0	00	29.12	30.05
07	OVC	070			-RA BR	70	68	69	93	0	00	29.23	30.17	07	OVC	005				3.00	BR		66	65	65	97	0	00	29.10	30.05
10	FEW	006				72	70	71	93	0	00	29.26	30.20	10	OVC	007				6.00	HZ		70	65	67	84	3	27	29.12	30.06
13	BKN	090			-RA	74	70	71	87	0	00	29.25	30.19	13	CLR	NC				9.00			78	66	70	67	5	01	29.08	30.01
16	OVC	075				78	67	71	69	0	00	29.18	30.12	16	SCT	090				10.00			80	62	68	54	3	04	29.03	29.96
19	CLR	NC				74	67	69	79	0	00	29.17	30.11	19	CLR	NC				10.00			74	63	67	69	0	00	29.03	29.97
22	CLR	NC				71	68	69	90	0	00	29.20	30.14	22	CLR	NC				10.00			68	62	64	81	0	00	29.07	30.01

OBSERVATIONS AT 3-HOURLY INTERVALS

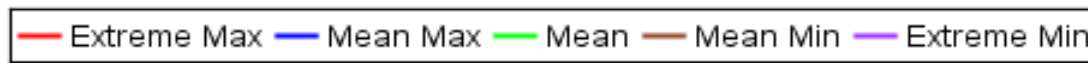
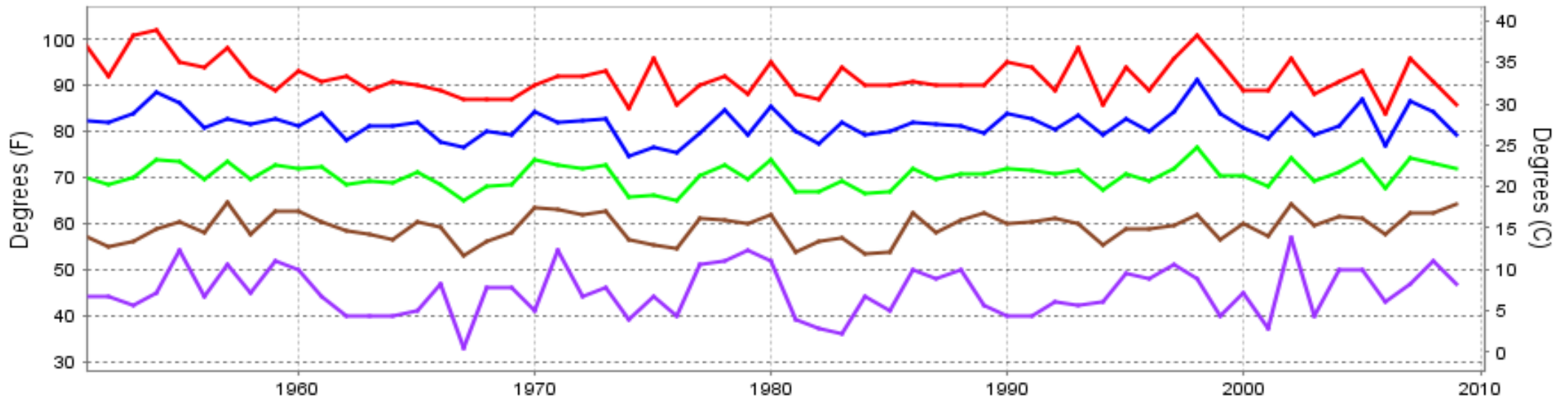
OAK RIDGE, TN

SEPTEMBER 2019 KOQT

WBAN # 53868

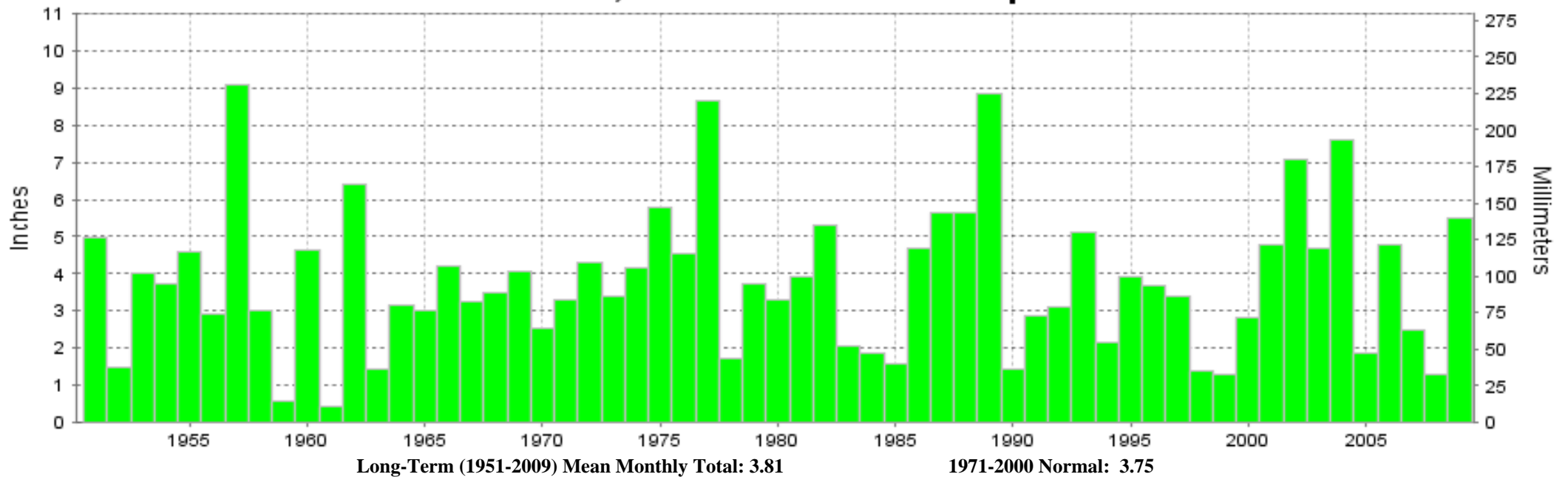
HOUR (LST)	SKY COVER	CEILING 100's of FT.	SATELLITE		WEATHER	TEMPERATURE °F			WIND SPEED (MPH) DIRECTION Tens of Deg	PRESSURE (INCHES, HG)		HOUR (LST)	SKY COVER	CEILING 100's of FT.	SATELLITE		WEATHER	TEMPERATURE °F			WIND SPEED (MPH) DIRECTION Tens of Deg	PRESSURE (INCHES, HG)							
			Observation Time (LST)	Eff Cld Amt Oktas		VISIBILITY (MILES)	DRY BULB	DEW POINT		WET BULB	RELATIVE HUMIDITY (PCT)				STATION	SEA LEVEL		Observation Time (LST)	Eff Cld Amt Oktas	VISIBILITY (MILES)		DRY BULB	DEW POINT	WET BULB	RELATIVE HUMIDITY (PCT)	STATION	SEA LEVEL		
																												Observation Time (LST)	Eff Cld Amt Oktas
SUNRISE: 0618 SEP 13						SUNSET: 1847						SUNRISE: 0622 SEP 19						SUNSET: 1839											
01	CLR	NC			10.00	64	61	62	90	0	00	29.06	30.00	01	BKN	038			10.00	BR	68	67	67	97	0	00	29.14	30.08	
04	CLR	NC			10.00	62	59	60	90	3	06	29.06	29.99	04	OVC	095			3.00	BR	68	67	67	97	0	00	29.14	30.07	
07	CLR	NC			10.00	61	58	59	90	0	00	29.08	30.02	07	OVC	011			10.00		69	68	68	97	0	00	29.16	30.11	
10	CLR	NC			10.00	71	59	64	66	5	VR	29.10	30.03	10	OVC	011			10.00		72	67	69	84	8	08	29.19	30.13	
13	CLR	NC			10.00	79	60	67	52	3	VR	29.08	30.01	13	SCT	015			10.00		75	68	70	79	3	05	29.17	30.11	
16	CLR	NC			10.00	81	62	69	53	3	03	29.02	29.96	16	FEW	018			10.00	-RA	75	70	72	85	0	00	29.14	30.08	
19	CLR	NC			10.00	74	65	68	74	0	00	29.03	29.97	19	FEW	050			10.00		73	71	72	93	0	00	29.14	30.09	
22	CLR	NC			10.00	67	64	65	90	0	00	29.06	30.00	22	BKN	120			6.00	-RA BR	71	70	70	97	0	00	29.16	30.10	
SUNRISE: 0618 SEP 14						SUNSET: 1846						SUNRISE: 0623 SEP 20						SUNSET: 1837											
01	CLR	NC			10.00	64	62	63	93	0	00	29.07	30.00	01	OVC	085			9.00		70	69	69	97	0	00	29.16	30.10	
04	CLR	NC			9.00	62	61	61	97	0	00	29.07	30.00	04	OVC	070			10.00		70	69	69	97	0	00	29.14	30.08	
07	CLR	NC			9.00	62	61	61	97	0	00	29.10	30.04	07	OVC	050			10.00		70	68	69	93	0	00	29.16	30.11	
10	CLR	NC			10.00	74	61	66	64	0	00	29.12	30.06	10	OVC	005			7.00	-RA	71	69	70	93	0	00	29.20	30.14	
13	FEW	037			10.00	81	64	70	56	0	00	29.09	30.02	13	BKN	055			10.00		72	71	71	97	0	00	29.18	30.13	
16	CLR	NC			10.00	84	62	70	48	3	VR	29.03	29.96	16	OVC	060			10.00	-RA	73	70	71	90	0	00	29.14	30.08	
19	FEW	110			10.00	78	66	70	67	0	00	29.04	29.98	19	OVC	070			10.00	-RA	71	71	71	100	0	00	29.13	30.08	
22	OVC	080			10.00	74	68	70	82	0	00	29.06	29.99	22	OVC	050			7.00		70	70	70	100	0	00	29.14	30.08	
SUNRISE: 0619 SEP 15						SUNSET: 1845						SUNRISE: 0624 SEP 21						SUNSET: 1836											
01	OVC	100			8.00	72	68	69	87	0	00	29.05	29.97	01	OVC	060			10.00	-RA	70	69	69	97	0	00	29.16	30.11	
04	OVC	095			8.00	71	68	69	90	0	00	29.04	29.96	04	OVC	045			10.00	-RA	69	69	69	100	0	00	29.14	30.08	
07	OVC	100			10.00	70	66	67	87	0	00	29.06	29.99	07	BKN	029			10.00		69	68	68	97	0	00	29.16	30.11	
10	BKN	070			10.00	73	65	68	76	0	00	29.09	30.02	10	BKN	038			10.00		70	68	69	93	0	00	29.18	30.13	
13	OVC	019			1.75	+RA BR	71	69	70	93	0	00	29.09	30.03	13	BKN	027			9.00	-RA	72	70	71	93	0	00	29.16	30.10
16	CLR	NC			9.00	-RA	72	69	70	90	3	07	29.03	29.97	16	OVC	065			10.00		73	71	72	93	0	00	29.14	30.08
19	CLR	NC			9.00		71	68	69	90	0	00	29.04	29.97	19	BKN	120			10.00		72	71	71	97	0	00	29.14	30.08
22	OVC	120			8.00		69	67	68	93	0	00	29.06	30.00	22	OVC	120			3.00	BR	70	70	70	100	0	00	29.17	30.11
SUNRISE: 0620 SEP 16						SUNSET: 1843						SUNRISE: 0625 SEP 22						SUNSET: 1834											
01	BKN	070			8.00	68	66	67	93	0	00	29.05	29.98	01	OVC	002			1.75	BR	69	68	68	97	0	00	29.16	30.10	
04	OVC	070			8.00	69	66	67	90	0	00	29.03	29.97	04	VV	001			0.25	FG	67	67	67	100	0	00	29.17	30.11	
07	OVC	046			7.00	-RA	68	67	67	97	0	00	29.06	30.00	07	OVC	019			10.00		67	67	67	100	0	00	29.20	30.14
10	OVC	014			9.00		70	67	68	90	0	00	29.09	30.02	10	OVC	040			10.00		72	69	70	90	0	00	29.23	30.17
13	OVC	015			2.50	RA BR	70	69	69	97	0	00	29.09	30.03	13	BKN	095			10.00		80	68	72	67	6	17	29.20	30.14
16	BKN	007			8.00		72	70	71	93	3	07	29.05	29.98	16	FEW	031			10.00		83	69	73	63	0	00	29.13	30.07
19	OVC	100			4.00	-RA BR	71	70	70	97	0	00	29.06	29.99	19	CLR	NC			10.00		76	71	73	85	0	00	29.14	30.08
22	BKN	060			7.00		70	69	69	97	0	00	29.08	30.01	22	CLR	NC			9.00		72	70	71	93	0	00	29.19	30.13
SUNRISE: 0621 SEP 17						SUNSET: 1842						SUNRISE: 0625 SEP 23						SUNSET: 1833											
01	OVC	055			5.00	BR	69	68	68	97	0	00	29.07	30.00	01	BKN	037			8.00		72	70	71	93	0	00	29.19	30.12
04	OVC	060			6.00	BR	69	68	68	97	0	00	29.07	30.00	04	OVC	002			3.00	BR	69	68	68	97	0	00	29.18	30.11
07	OVC	008			4.00	BR	69	68	68	97	0	00	29.10	30.03	07	OVC	001			1.25	BR	69	69	69	100	0	00	29.21	30.15
10	BKN	070			10.00		73	68	70	84	6	07	29.12	30.05	10	BKN	014			10.00		75	68	70	79	0	00	29.24	30.18
13	BKN	045			10.00	-RA	76	69	71	79	3	06	29.10	30.04	13	CLR	NC			10.00		82	68	73	63	0	00	29.20	30.13
16	FEW	100			10.00		74	71	72	90	5	07	29.07	30.00	16	CLR	NC			10.00		83	67	72	59	0	00	29.15	30.08
19	CLR	NC			8.00		72	70	71	93	5	08	29.06	30.00	19	CLR	NC			10.00		78	71	73	79	0	00	29.15	30.09
22	OVC	043			5.00	BR	71	70	70	97	0	00	29.10	30.04	22	CLR	NC			10.00		74	71	72	90	0	00	29.17	30.11
SUNRISE: 0621 SEP 18						SUNSET: 1840						SUNRISE: 0626 SEP 24						SUNSET: 1831											
01	OVC	070			4.00	BR	70	70	70	100	0	00	29.10	30.03	01	BKN	110			10.00		73	71	72	93	0	00	29.17	30.10
04	OVC	003			5.00	BR	70	69	69	97	0	00	29.10	30.03	04	OVC	100			9.00		72	70	71	93	0	00	29.17	30.10
07	BKN	100			5.00	BR	69	68	68	97	0	00	29.13	30.07	07	OVC	120			9.00		72	70	71	93	0	00	29.17	30.11
10	BKN	085			10.00		74	68	70	82	0	00	29.14	30.08	10	SCT	120			10.00		77	70	72	79	0	00	29.18	30.11
13	BKN	041			10.00		81	68	72	65	5	01	29.12	30.05	13	CLR	NC			10.00		83	70	74	65	6	18	29.13	30.06
16	OVC	085			10.00		81	68	72	65	0	00	29.08	30.00	16	FEW	034			10.00		85	69	74	59	5	26	29.09	30.01
19	OVC	050			10.00		70	66	67	87	0	00	29.12	30.06	19	CLR	NC			10.00		79	73	75	82	0	00	29.10	30.03
22	OVC	085			10.00		69	68	68	97	0	00	29.15	30.09	22	SCT	100			10.00		76	71	73	85	0	00	29.13	30.06

OAK RIDGE, TN SEPTEMBER Temperatures



Long-Term (1951-2009) Mean: 70.4
1971-2000 Normal: 70.0

OAK RIDGE, TN SEPTEMBER Precipitation



Long-Term (1951-2009) Mean Monthly Total: 3.81

1971-2000 Normal: 3.75



SEPTEMBER 2009
OAK RIDGE, TN

LOCAL CLIMATOLOGICAL DATA NOAA, National Climatic Data Center

I certify that this is an official publication of the National Oceanic and Atmospheric Administration (NOAA). It is compiled using information from weather observing sites operated by NOAA-National Weather Service / Department Of Transportation-Federal Aviation Administration and received at the National Climatic Data Center (NCDC), Asheville, North Carolina 28801.

DIRECTOR

NCDC now offers an annual online subscription for the **Edited Local Climatological Data Publication**. When you purchase this subscription service, you will have **immediate online access** to all previous publications back to July 1996 and all publications thereafter until the expiration of the subscription. Your subscription is valid for one year after purchase. **The total cost for online delivery (including back issues) is significantly less than the cost for offline delivery.**

To order this and other subscriptions online with your credit card, go to: www.ncdc.noaa.gov and choose subscriptions.

We welcome your questions or comments, please contact us at:

Toll Free Number (866) 742-3322 (voice)

Fax Number : (304) 726-4409

TDD : (828) 271-4010

or Email : ncdc.info@noaa.gov

Local Climatological Data is available at www.ncdc.noaa.gov

NCDC Subscription Services Center
310 State Route 956 Building 300
Rocket Center, WV 26726
OFFICIAL BUSINESS, PENALTY FOR PRIVATE USE \$300

FIRST CLASS
POSTAGE AND FEES PAID
NOAA
PERMIT G-19

For address correction, please return a photocopy of this page to Subscription Services indicating changes