



# MAY 2010 LOCAL CLIMATOLOGICAL DATA NOAA, National Climatic Data Center

OAK RIDGE, TN  
OAK RIDGE (KOQT)  
Lat:36° 1' N Long: 84° 14' W Elev (Ground) 913 Feet  
Time Zone : EASTERN WBAN: 53868 ISSN#: 0198-487X



Date 1	Temperature °F						Deg Days BASE 65°		WEATHER 10	SNOW/ICE ON GND(IN)		PRECIPITATION ON GND(IN)		PRESSURE (INCHES OF HG)		WIND SPEED = MPH DIR = TENS OF DEGREES								Date 24
	MAXIMUM 2	MINIMUM 3	AVERAGE 4	DEP FROM NORMAL 5	AVERAGE DEW PT 6	AVERAGE WET BULB 7	HEATING 8	COOLING 9		LST 11	LST 12	LST 13	LST 14	AVERAGE STATION 15	AVERAGE SEA LEVEL 16	RESULTANT SPEED 17	RES DIR 18	AVERAGE SPEED 19	MAXIMUM					
																			3-SEC		2-MIN			
01	74	61	68	7	61	63	0	3	RA FG BR			2.22	28.92	29.87	0.3	07	2.8	17	27	10	24	01		
02	86	64	75	13	66	69	0	10	RA BR			1.01	28.87	29.80	4.8	20	5.3	31	19	21	20	02		
03	82	62	72	10	62	66	0	7	RA BR			1.30	28.93	29.88	0.6	21	2.7	16	26	12	27	03		
04	82	55	69	7	55	60	0	4	FG+ BR			0.00	29.01	29.95	1.5	12	2.6	14	05	9	16	04		
05	85	54	70	7	55	61	0	5	BR			0.00	29.00	29.93	0.7	21	1.9	17	21	13	20	05		
06	88	58	73	10	60	65	0	8				0.00	28.98	29.93	1.5	23	2.4	16	22	10	29	06		
07	87	59	73	10	61	66	0	8	BR			0.00	28.96	29.88	6.0	21	6.1	29	22	18	21	07		
08	77	53	65	2	41	53	0	0				0.00	29.05	30.03	4.0	29	6.9	24	28	16	28	08		
09	66	43*	55	-9	37	46	10	0				0.00	29.29	30.28	2.1	05	3.5	22	06	13	06	09		
10	63	45	54*	-10	44	49	11	0	RA			T	29.31	30.28	1.0	07	3.1	16	06	10	07	10		
11	73	53	63	-1	57	60	2	0	RA			0.05	29.18	30.15	2.0	22	3.1	17	23	12	19	11		
12	82	64	73	8	63	66	0	8				0.00	29.18	30.13	2.3	21	2.8	21	21	14	19	12		
13	87	60	74	9	63	67	0	9	FG+ FG BR			0.00	29.21	30.17	1.2	20	2.7	21	25	14	21	13		
14	86	63	75	10	65	68	0	10	RA BR			0.05	29.27	30.20	1.0	21	2.3	21	28	12	28	14		
15	84	62	73	8	64	66	0	8	RA FG+ FG BR			0.45	29.21	30.15	1.2	07	2.1	41*	15	28*	15	15		
16	77	61	69	3	64	65	0	4	RA FG+ FG BR			0.18	29.10	30.03	0.5	12	0.7	21	25	13	23	16		
17	78	63	71	5	64	66	0	6	RA FG BR			0.17	28.98	29.91	1.8	22	3.2	18	32	9	33	17		
18	74	60	67	1	56	60	0	2	RA			T	28.95	29.90	2.0	26	3.2	20	24	13	26	18		
19	72	53	63	-3	52	57	2	0				0.00	29.00	29.97	1.8	26	2.2	17	25	12	26	19		
20	79	52	66	-1	55	59	0	1	BR			0.00	29.08	30.03	1.0	07	2.0	13	04	8	08	20		
21	78	64	71	4	62	65	0	6	RA			0.05	29.09	30.03	1.7	20	2.3	18	19	13	19	21		
22	84	64	74	7	63	66	0	9	RA			T	29.08	30.02	1.3	24	2.7	16	29	8	21	22		
23	89	59	74	6	61	66	0	9	FG+ BR			0.00	29.12	30.07	0.2	01	0.6	12	14	8	13	23		
24	87	61	74	6	61	66	0	9				0.00	29.10	30.04	1.5	07	2.8	16	07	12	07	24		
25	84	62	73	5	62	65	0	8	RA FG BR			0.20	29.13	30.07	0.2	11	1.1	20	16	14	15	25		
26	88	62	75	7	63	66	0	10	FG+ FG BR			0.00	29.05	29.98	0.7	02	1.2	21	36	14	08	26		
27	88	62	75	6	64	68	0	10	FG+ BR			0.00	28.95	29.87	0.7	07	1.4	16	09	10	09	27		
28	89*	64	77*	8	64	67	0	12	RA BR			0.01	28.92	29.85	1.9	08	3.4	26	15	17	20	28		
29	86	62	74	5	65	67	0	9	RA BR			0.16	28.96	29.90	0.5	10	1.1	15	12	12	13	29		
30	84	64	74	5	66	69	0	9	RA FG+ BR			T	29.03	29.97	0.8	21	2.0	21	20	13	20	30		
31	83	68	76	6	67	69	0	11	RA BR			0.23	29.05	29.99	1.4	18	1.9	15	20	9	21	31		

81.4	59.3	70.4	☼	59.5	63.4	0.8	6.3	< MONTHLY AVERAGES   TOTALS >				6.08	29.07	30.01	0.7	21	2.6	< MONTHLY AVERAGES			
3.6	5.9	4.8		-----DEPARTURE FROM NORMAL ----->				0.94	SUNSHINE, CLOUD, & VISIBILITY TABLES ON PAGE 3												
<b>DEGREE DAYS</b>				<b>GREATEST 24-HR PRECIPITATION :</b> 2.31 <b>DATE :</b> 02-03				<b>SEA LEVEL PRESSURE</b>				<b>DATE TIME</b>									
<b>MONTHLY</b>				<b>GREATEST 24-HR SNOWFALL :</b>				<b>MAXIMUM :</b> 30.32				<b>10 0653</b>									
<b>SEASON TO DATE</b>				<b>GREATEST SNOW DEPTH :</b>				<b>MINIMUM :</b> 29.74				<b>02 1753</b>									
<b>TOTAL DEPARTURE</b>		<b>TOTAL DEPARTURE</b>		<b>NUMBER OF -&gt; DAYS WITH</b>		<b>MAXIMUM TEMP &gt;= 90 :</b> 0		<b>MINIMUM TEMP &lt;= 32 :</b> 0		<b>PRECIPITATION &gt;= 0.01 INCH :</b> 13		<b>PRECIPITATION &gt;= 0.10 INCH :</b> 9		<b>SNOWFALL &gt;= 1.0 INCH :</b>							
<b>HEATING :</b>	25	-55	3943	-44																	
<b>COOLING :</b>	195	100	238	122																	

MAY 2010  
OAK RIDGE, TN

# HOURLY PRECIPITATION

(WATER EQUIVALENT IN INCHES)

OAK RIDGE, TN (KOQT)  
MAY 2010

WBAN # 53868

Date	FOR HOUR (LST) ENDING AT												Date	FOR HOUR (LST) ENDING AT												Date	Sum of Hourly Data	2400 LST Water Equiv.
	1	2	3	4	5	6	7	8	9	10	11	12		13	14	15	16	17	18	19	20	21	22	23	24			
01												0.22	01	0.13	0.04	T	T								01	2.22	2.22	
02													02			T	T								02	1.01	1.01	
03	0.66	0.31	0.24	0.07	0.02	T							03			T		0.08	0.07					03	1.30	1.30		
04													04												04	0.00	0.00	
05													05												05	0.00	0.00	
06													06												06	0.00	0.00	
07													07												07	0.00	0.00	
08													08												08	0.00	0.00	
09													09												09	0.00	0.00	
10													10			T	T	T	T	T	T			10	T	T		
11				0.05	T	T	T						11											11	0.05	0.05		
12													12											12	0.00	0.00		
13													13											13	0.00	0.00		
14													14			T	0.04	0.01	T	T				14	0.05	0.05		
15													15						0.45					15	0.45	0.45		
16													16	0.13	T			0.01	0.02	0.02			T	16	0.18	0.18		
17	0.01									T			17	0.15	0.01							T	T	17	0.17	0.17		
18										T			18											18	T	T		
19													19											19	0.00	0.00		
20													20											20	0.00	0.00		
21		T	T	0.02	T		T	0.03	T	T			21											21	0.05	0.05		
22							T	T					22											22	T	T		
23													23											23	0.00	0.00		
24													24											24	0.00	0.00		
25													25			T	0.20	T						25	0.20	0.20		
26													26											26	0.00	0.00		
27													27											27	0.00	0.00		
28													28			T	0.01	T						28	0.01	0.01		
29													29				0.15	0.01						29	0.16	0.16		
30													30											30	T	T		
31				T	0.03	0.04	0.03	0.02	0.01	0.04			31			T		0.02	0.04					31	0.23	0.23		

\* Indicates sum of Hourly and Daily disagree.

### MAXIMUM SHORT DURATION PRECIPITATION (See Note)

Time Period (Minutes)	5	10	15	20	30	45	60	80	100	120	150	180
Precipitation (Inches)	0.28	0.42	0.57	0.71	0.87	1.02	1.07	1.10	1.39	1.56	1.67	1.78
Ending Date	15	01	01	01	01	01	01	01	01	01	01	01
Ending Time (Hr/Min)	1920	1936	1935	1936	1946	1953	1958	2011	2057	2104	2137	2204

Note : The hourly and daily precipitation totals are printed in the last 2 columns and hi-lighted in red when they disagree. NWS does not edit ASOS hourly values but may edit daily and monthly totals. Hourly, daily, and monthly totals are printed as reported by the ASOS site.

Date and time are not entered for TRACE amounts.

# REFERENCE NOTES & SUPPLEMENTAL SUMMARIES

\* = Extreme for the month (last occurrence if more than one).

T = Trace precipitation amount.

+ = also occurs on earlier date.

FG+ = Heavy fog, visibility .25 miles or less.

BLANK entries denote missing or unreported data.

Resultant wind is the vector sum of the wind speeds and directions divided by the number of observations.

Wind direction is recorded in tens of degrees (2 digits) clockwise from true north. '00' = calm, 'VR' = variable.

Precipitation is for the 24-hour period ending at the time indicated in the column heading.

Water Equivalent of snow on the ground is reported only when the depth is 2 or more inches.

NORMALS ARE FOR THE YEARS 1971-2000

## WEATHER NOTATIONS

QUALIFIER	WEATHER PHENOMENA		
DESCRIPTOR	PRECIPITATION	OBSCURATION	OTHER
BC Patches	DZ Drizzle	BR Mist	DS Duststorm
BL Blowing	GR Hail	DU Widespread Dust	FC Funnel Cloud
DR Low Drifting	GS Small Hail and/or Snow Pellets	FG Fog	+FC Tornado Waterspout
FZ Freezing	IC Ice Crystals	FU Smoke	PO Well-Developed Dust/Sand Whirls
MI Shallow	PL Ice Pellets	HZ Haze	
PR Partial	RA Rain	PY Spray	SQ Squalls
SH Shower(s)	SG Snow Grains	SA Sand	SS Sandstorm
TS Thunderstorm	SN Snow	VA Volcanic Ash	GL Glaze
VC In the Vicinity	UP Unkown Precipitation		

Intensity (as indicated on pages 4 to 6):  
'+' = Heavy    '' = Moderate    '-' = Light

# OAK RIDGE, TN MAY 2010

Ceilometer (30-second) data are used to derive cloudiness at or below 12,000 feet. This cloudiness is the mean cloud cover detected during sunrise to sunset (SR-SS), or midnight to midnight (MN-MN).

Satellite data are used to derive cloudiness above 12,000 feet. Effective Cloud Amount is based on the cloud cover and the transparency of the clouds within the satellite field of view (approx. 31x31 miles).

Sky Condition is based on the sum (not to exceed 8) of the sunrise to sunset cloud cover below and above 12,000 feet. Both ceilometer and satellite data must be present to compute Sky Condition. Clear = 0-2 oktas, Partly Cloudy = 3-6 oktas, Cloudy = 7-8 oktas.

A Heating (Cooling) Degree Day is the difference between the average daily temperature and 65 degrees F. The HDD season begins July 1, the CDD season begins January 1.

Dew Point is the temperature to which the air must be cooled to achieve 100% relative humidity. Wet Bulb is the temperature the air would have if cooled to saturation at constant pressure by evaporation of water into it.

Snow Depth, Snowfall, and Sunshine data may come from nearby sites that the National Weather Service deems Climatologically representative of this site.

### ADDITIONAL NOTES:

Station Augmentation-OAK RIDGE ATDD COOP  
Lat/Lon:36.00278/-84.24861 Elevation:905FT  
Distance:1.5 MI Dir:SW  
Augmented Elements:Temp,Precip,Snow  
Equipment:Pcpn-Model TRP525M, Temp Vaisala HMP35C,  
Snow Board, Snow Stick

Date	SUNSHINE		CLOUDINESS (OKTAS)				VISIBILITY (MILES)		RESERVED
	TOTAL MINUTES	PERCENT POSSIBLE	SR-SS		MN-MN		MINIMUM	MAXIMUM	
			Sky Cover	Satellite	Sky Cover	Satellite			
01							1.00	10.00	
02							1.00	10.00	
03							1.00	10.00	
04							0.25	10.00	
05							7.00	10.00	
06							10.00	10.00	
07							5.00	10.00	
08							10.00	10.00	
09							10.00	10.00	
10							9.00	10.00	
11							7.00	10.00	
12							7.00	10.00	
13							0.50	10.00	
14							5.00	10.00	
15							0.25	10.00	
16							0.25	10.00	
17							0.75	10.00	
18							8.00	10.00	
19							8.00	10.00	
20							3.00	10.00	
21							7.00	10.00	
22							10.00	10.00	
23							1.00	10.00	
24							9.00	10.00	
25							0.50	10.00	
26							0.00	10.00	
27							0.25	10.00	
28							2.50	10.00	
29							1.75	10.00	
30							0.00	10.00	
31							5.00	10.00	
MONTHLY AVGS							4.23	10.00	
<b>SUNSHINE (Minutes)</b>									
Total : 0					Possible :				
Percent Possible :									
<b>NUMBER OF DAYS WITH :</b>									
SKY CONDITION									
Clear		Partly CLDY		Cloudy		Missing			
<b>MINIMUM VISIBILITY (MILES)</b>									
<= .25			<= 3.0			>= 7.0			
6			16			12			





# OBSERVATIONS AT 3-HOURLY INTERVALS

# OAK RIDGE, TN

MAY 2010

KOQT

WBAN # 53868

HOUR (LST)	SKY COVER	CEILING 100's of FT.	SATELLITE		WEATHER	TEMPERATURE °F			WIND SPEED (MPH) DIRECTION Tens of Deg	PRESSURE (INCHES, HG)			
			Observation Time (LST)	Eff Cl'd Amt Oktas		VISIBILITY (MILES)	DRY BULB	DEW POINT		WET BULB	RELATIVE HUMIDITY (PCT)	STATION	SEA LEVEL
<b>SUNRISE: 0525      MAY 25      SUNSET: 1943</b>													
01	CLR	NC				66	62	64	87	0 00	29.12	30.05	
04	SCT	050				63	61	62	93	0 00	29.13	30.06	
07	CLR	NC				65	61	63	87	0 00	29.16	30.10	
10	CLR	NC				77	61	67	58	0 00	29.18	30.11	
13	SCT	060				82	60	68	47	0 00	29.15	30.09	
16	SCT	055				82	59	67	46	5 VR	29.10	30.04	
19	CLR	NC				69	66	67	90	0 00	29.10	30.05	
22	BKN	002			BR	65	64	64	97	0 00	29.10	30.05	
<b>SUNRISE: 0524      MAY 26      SUNSET: 1943</b>													
01	CLR	NC				63	63	63	100	0 00	29.12	30.05	
04	OVC	002			BR	62	62	62	100	0 00	29.10	30.03	
07	VV	002			FG	63	62	62	97	0 00	29.10	30.05	
10	CLR	NC				75	65	69	71	0 00	29.08	30.02	
13	SCT	041				82	65	71	56	0 00	29.04	29.97	
16	BKN	085				83	60	68	46	10 35	28.98	29.91	
19	CLR	NC				78	60	67	54	0 00	28.96	29.90	
22	CLR	NC				71	64	67	79	0 00	28.99	29.92	
<b>SUNRISE: 0524      MAY 27      SUNSET: 1944</b>													
01	CLR	NC				66	63	64	90	0 00	28.99	29.92	
04	CLR	NC				63	62	62	97	0 00	28.97	29.90	
07	VV	001			FG	63	63	63	100	0 00	29.00	29.93	
10	CLR	NC				80	66	71	62	3 VR	28.99	29.91	
13	FEW	050				87	62	71	43	8 06	28.94	29.86	
16	CLR	NC				84	64	71	51	5 10	28.90	29.83	
19	CLR	NC				80	65	70	60	0 00	28.90	29.83	
22	CLR	NC				73	65	68	76	0 00	28.93	29.85	
<b>SUNRISE: 0523      MAY 28      SUNSET: 1945</b>													
01	BKN	065			BR	69	66	67	90	0 00	28.92	29.83	
04	CLR	NC			BR	67	65	66	93	0 00	28.91	29.83	
07	CLR	NC			BR	69	65	66	87	0 00	28.93	29.85	
10	CLR	NC				81	65	70	58	7 06	28.93	29.85	
13	CLR	NC				87	65	72	48	7 07	28.89	29.81	
16	BKN	090				71	62	65	73	7 23	28.95	29.89	
19	CLR	NC			BR	68	65	66	90	5 06	28.94	29.87	
22	CLR	NC			BR	65	63	64	93	0 00	28.96	29.89	
<b>SUNRISE: 0523      MAY 29      SUNSET: 1946</b>													
01	CLR	NC				64	62	63	93	0 00	28.96	29.88	
04	CLR	NC			BR	62	61	61	97	0 00	28.92	29.86	
07	CLR	NC			BR	64	61	62	90	0 00	28.98	29.92	
10	CLR	NC				73	63	67	71	0 00	28.99	29.93	
13	CLR	NC				83	64	71	53	5 VR	28.99	29.91	
16	FEW	049				85	64	71	49	0 00	28.93	29.85	
19	BKN	110				73	70	71	90	0 00	28.94	29.88	
22	FEW	002			BR	69	68	68	97	0 00	29.00	29.93	
<b>SUNRISE: 0523      MAY 30      SUNSET: 1946</b>													
01	CLR	NC			BR	68	67	67	97	0 00	29.00	29.92	
04	VV	001			FG	66	65	65	97	0 00	29.00	29.92	
07	VV	002			FG	65	64	64	97	0 00	29.05	29.98	
10	OVC	055				75	67	70	76	0 00	29.09	30.02	
13	BKN	120				82	65	71	56	5 07	29.05	29.98	
16	CLR	NC				80	67	71	65	3 26	29.01	29.94	
19	SCT	120				77	67	70	71	5 VR	29.02	29.96	
22	CLR	NC				74	68	70	82	3 21	29.07	29.99	

HOUR (LST)	SKY COVER	CEILING 100's of FT.	SATELLITE		WEATHER	TEMPERATURE °F			WIND SPEED (MPH) DIRECTION Tens of Deg	PRESSURE (INCHES, HG)			
			Observation Time (LST)	Eff Cl'd Amt Oktas		VISIBILITY (MILES)	DRY BULB	DEW POINT		WET BULB	RELATIVE HUMIDITY (PCT)	STATION	SEA LEVEL
<b>SUNRISE: 0522      MAY 31      SUNSET: 1947</b>													
01	CLR	NC				71	67	68	87	0 00	29.06	29.98	
04	OVC	110			-RA	70	67	68	90	0 00	29.09	30.02	
07	OVC	110			-RA	68	66	67	93	0 00	29.10	30.04	
10	OVC	047				71	66	68	84	0 00	29.12	30.05	
13	BKN	036				77	66	70	69	0 00	29.06	29.99	
16	BKN	034				81	66	71	60	7 16	29.01	29.93	
19	SCT	120				72	68	69	87	0 00	29.02	29.95	
22	SCT	100				72	70	71	93	0 00	29.06	29.99	

## 3-HOURLY OBSERVATION NOTES

Sky Cover is the amount of the sky obscured. CLR or SKC = 0, FEW = 1/8-2/8, SCT = 3/8-4/8, BKN = 5/8-7/8, OVC = 8/8, W = Vertical Visibility = 8/8

Ceiling is reported in hundreds of feet above ground level for clouds at or below 12,000 feet. NC = No Ceiling detected.

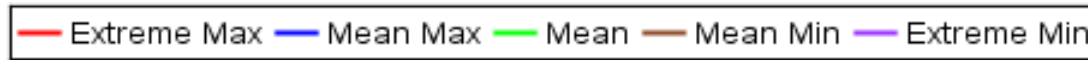
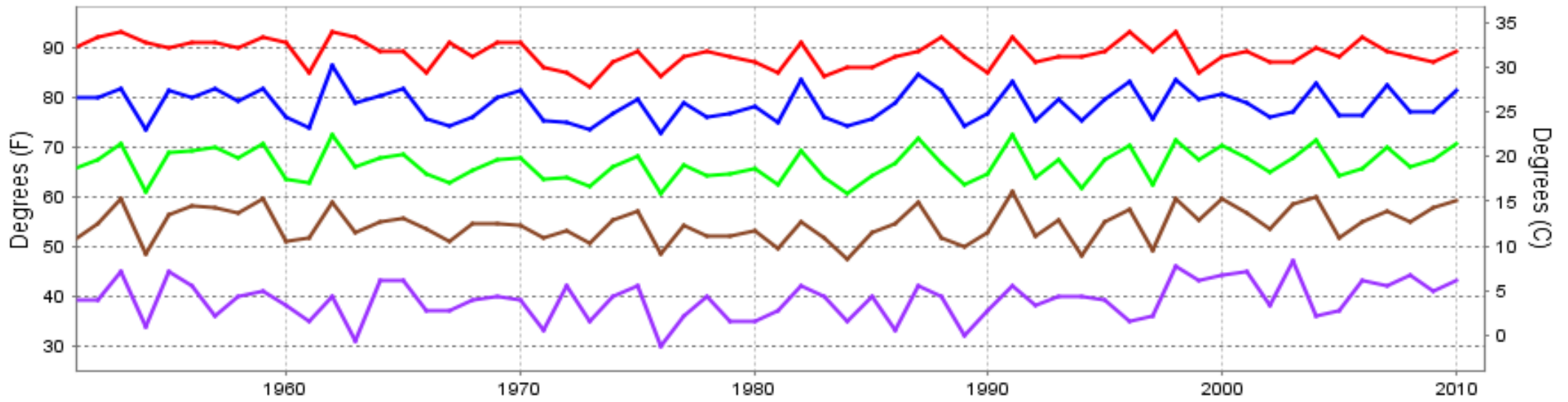
& = Original observation contained additional weather elements.

See page 3 for additional notes.

## SUMMARY BY HOUR

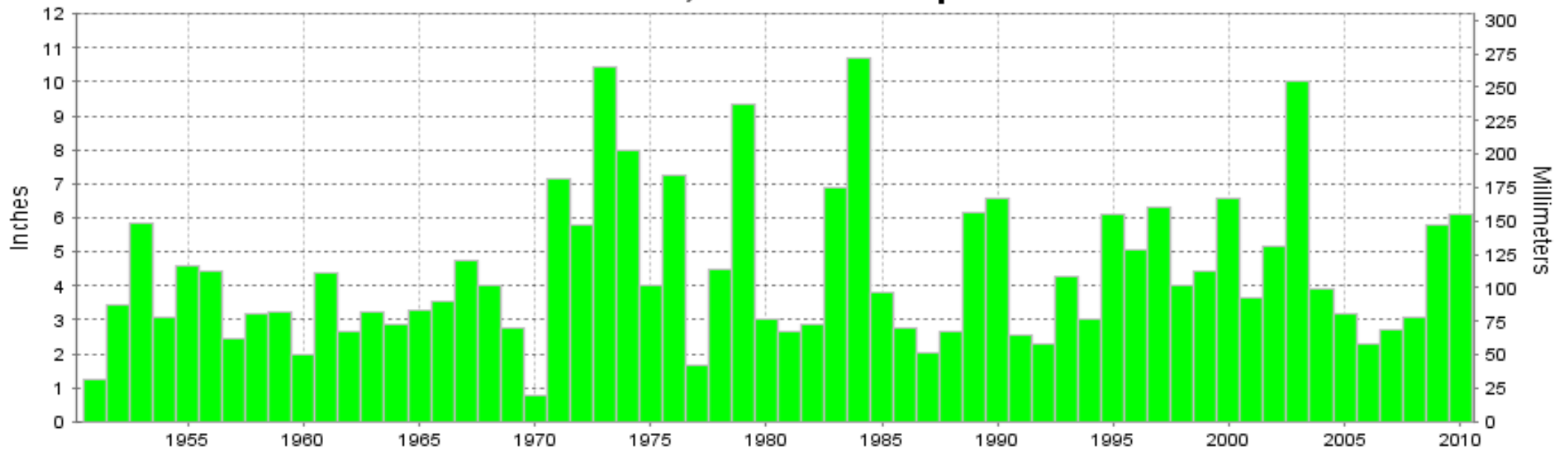
HOUR (LST)	AVERAGES								RESULTANT WIND (MPH)			
	CEILOMETER	EFF CLD AMT	DRY BULB	DEW POINT	WET BULB	RELATIVE HUMIDITY	PRESSURE (Inches, HG)		VISIBILITY (Miles)	WIND SPEED (MPH)	SPEED	DIRECTION
							STATION	SEA LEVEL				
01			64	59	61	86	29.07	30.01	8.65	1	XXX	XX
02			63	59	61	88	29.06	29.99	7.92	1	1	21
03			62	59	60	89	29.05	29.99	7.87	0	XXX	XX
04			61	59	60	91	29.06	30.00	7.69	1	3	24
05			61	58	59	92	29.07	30.01	7.31	1	1	12
06			61	58	59	91	29.08	30.03	6.46	1	1	20
07			62	59	60	88	29.10	30.04	6.82	1	1	12
08			66	60	62	82	29.10	30.05	8.97	2	1	14
09			69	60	64	74	29.11	30.05	9.71	3	1	13
10			72	60	65	67	29.10	30.04	9.90	4	1	12
11			75	60	66	62	29.10	30.04	9.97	4	1	25
12			76	60	66	60	29.09	30.03	9.72	5	1	25
13			77	59	66	56	29.08	30.02	9.51	5	2	26
14			78	59	66	53	29.06	30.00	10.00	6	1	25
15			79	58	66	51	29.05	29.98	10.00	6	2	26
16			79	58	66	52	29.03	29.97	10.00	5	1	26
17			77	59	66	55	29.03	29.97	9.90	4	1	25
18			76	59	66	60	29.04	29.98	9.31	4	0	19
19			74	60	65	64	29.04	29.98	9.58	3	1	23
20			71	60	64	72	29.05	29.99	9.14	1	2	25
21			69	61	64	77	29.06	30.00	9.26	1	2	25
22			67	61	63	81	29.07	30.01	8.83	1	2	23
23			66	60	63	83	29.07	30.01	8.77	1	1	19
24			65	60	62	84	29.07	30.01	8.63	1	1	24

## OAK RIDGE, TN MAY Temperatures



**Long-Term (1951-2010) Mean: 66.4**  
**1971-2000 Normal: 65.6**

## OAK RIDGE, TN MAY Precipitation



**Long-Term (1951-2010) Mean Monthly Total: 4.41**

**1971-2000 Normal: 5.14**



MAY 2010  
OAK RIDGE, TN

## LOCAL CLIMATOLOGICAL DATA NOAA, National Climatic Data Center

*I certify that this is an official publication of the National Oceanic and Atmospheric Administration (NOAA). It is compiled using information from weather observing sites operated by NOAA-National Weather Service / Department Of Transportation-Federal Aviation Administration and received at the National Climatic Data Center (NCDC), Asheville, North Carolina 28801.*

**DIRECTOR**

NCDC now offers an annual online subscription for the **Edited Local Climatological Data Publication**. When you purchase this subscription service, you will have **immediate online access** to all previous publications back to July 1996 and all publications thereafter until the expiration of the subscription. Your subscription is valid for one year after purchase. **The total cost for online delivery (including back issues) is significantly less than the cost for offline delivery.**

To order this and other subscriptions online with your credit card, go to: [www.ncdc.noaa.gov](http://www.ncdc.noaa.gov) and choose subscriptions.

We welcome your questions or comments, please contact us at:

Toll Free Number (866) 742-3322 (voice)

Fax Number : (304) 726-4409

TDD : (828) 271-4010

or Email : [ncdc.info@noaa.gov](mailto:ncdc.info@noaa.gov)

Local Climatological Data is available at [www.ncdc.noaa.gov](http://www.ncdc.noaa.gov)

NCDC Subscription Services Center  
310 State Route 956 Building 300  
Rocket Center, WV 26726  
OFFICIAL BUSINESS, PENALTY FOR PRIVATE USE \$300

FIRST CLASS  
POSTAGE AND FEES PAID  
NOAA  
PERMIT G-19

For address correction, please return a photocopy of this page to Subscription Services indicating changes