



AUGUST 1997

LOCAL CLIMATOLOGICAL DATA

NOAA, National Climatic Data Center

KNOXVILLE, TN

MC GHEE TYSON AIRPORT (TYS)
 Lat: 35° 49' N Long: 83° 59' W Elev (Ground): 979 Feet
 Time Zone: EASTERN WBAN: 13891 ISSN #:0198-4810

AUGUST 1997
KNOXVILLE, TN

DATE	TEMPERATURE °F							DEG DAYS BASE 65°		WEATHER	SNOW/ICE ON GND(IN)		PRECIPITATION (INCHES)		PRESSURE (INCHES OF HG)		WIND SPEED = MPH DIR = TENS OF DEGREES								DATE						
	MAXIMUM	MINIMUM	AVERAGE	DEP FROM NORMAL	AVERAGE DEW PT	AVERAGE WET BULB	HEATING	COOLING	0700 LST		1300 LST	2400 LST	2400 LST	AVERAGE STATION	AVERAGE SEA LEVEL	RESULTANT SPEED	RES DIR	AVERAGE SPEED	MAXIMUM												
																			5-SEC		2-MIN										
1	2	3	4	5	6	7	8	9	11	12	13	14	15	16	17	18	19	20	21	22	23	24									
01	85	59	72	-5	59	64	0	7				0.00	29.15	30.18	1.8	01	3.0	15	04	11	02	01									
02	88	62	75	-2	60	66	0	10	BR			0.00	29.07	30.09	1.1	26	2.7	11	27	9	29	02									
03	90	62	76	-1	63	68	0	11	BR HZ			0.00	29.03	30.04	1.1	31	3.2	14	30	10	32	03									
04	91	67	79	-2	67	71	0	14	TS TSRA BR HZ			0.09	28.92	29.93	3.6	27	5.3	25	05	23	04	04									
05	81	64	73	-4	66	68	0	8	RA FG+ BR			0.04	28.93	29.94	1.5	05	4.1	16	02	13	01	05									
06	82	60	71	-6	57	62	0	6				0.00	29.05	30.07	6.1	05	7.0	15	02	13	04	06									
07	85	64	75	-2	58	64	0	10				0.00	29.10	30.12	4.6	04	6.2	15	04	11	04	07									
08	83	61	72	-5	63	67	0	7	BR HZ			0.00	29.13	30.15	1.1	36	3.8	18	16	14	17	08									
09	74	65	70	-7	64	66	0	5	RA BR HZ			0.17	29.12	30.14	2.0	34	3.9	13	26	11	26	09									
10	82	65	74	-3	66	68	0	9	RA BR HZ			0.06	29.12	30.15	2.3	36	3.4	9	23	8	34	10									
11	89	66	78	2	69	72	0	13	RA BR			0.01	29.12	30.13	1.0	22	2.9	16	27	10	17	11									
12	92	70	81	5	69	72	0	16	BR HZ			0.00	29.09	30.11	5.0	25	5.8	20	23	16	24	12									
13	88	74	81	5	71	74	0	16	TS RA HZ			0.02	28.99	30.00	11.1	25	11.3	25	23	21	25	13									
14	90	72	81	5	69	72	0	16	BR			0.00	28.93	29.94	4.1	26	5.9	15	31	13	25	14									
15	94	72	83	7	70	74	0	18				0.00	28.91	29.92	7.7	24	8.8	25	25	21	25	15									
16	96*	75	86*	10	71	75	0	21	BR HZ			0.00	29.02	30.03	8.2	24	8.7	18	24	16	23	16									
17	95	73	84	8	72	75	0	19	TS TSRA			0.17	29.02	30.03	9.0	23	9.7	38	20	33*	19	17									
18	88	71	80	4	69	72	0	15	TS TSRA RA BR			0.24	29.02	30.03	3.0	28	5.8	31	28	24	30	18									
19	90	67	79	3	67	71	0	14	TS TSRA BR			0.82	28.99	30.00	0.9	34	3.9	39*	29	32	29	19									
20	82	68	75	1	70	72	0	10	RA BR			0.40	28.88	29.89	7.3	25	8.5	21	24	18	24	20									
21	81	62	72	-4	60	65	0	7	BR HZ			0.00	28.90	29.92	4.0	30	5.5	18	30	15	30	21									
22	77	57	67	-9	56	61	0	2				0.00	28.98	30.00	3.5	36	4.6	18	33	13	01	22									
23	78	55	67*	-5	55	60	0	2	BR			0.00	29.08	30.11	2.7	05	3.6	17	01	13	01	23									
24	82	54*	68	-7	56	61	0	3	BR			0.00	29.07	30.10	2.5	33	3.8	15	33	13	30	24									
25	82	60	71	-4	60	64	0	6	RA			T	29.05	30.08	2.3	29	3.9	14	29	11	28	25									
26	87	63	75	0	62	67	0	10	HZ			0.00	29.04	30.05	1.8	28	3.2	14	33	13	30	26									
27	89	65	77	2	67	70	0	12	TS BR HZ			0.00	28.96	29.97	2.1	28	3.1	14	28	10	31	27									
28	88	69	79	4	69	72	0	14	BR HZ			0.00	28.89	29.90	3.0	27	3.5	15	26	13	27	28									
29	91	68	80	5	67	71	0	15	TS BR HZ			0.00	28.88	29.89	2.7	36	4.8	17	02	13	04	29									
30	87	63	75	1	62	67	0	10				0.00	28.92	29.93	3.4	03	5.3	16	29	14	28	30									
31	90	63	77	3	65	69	0	12	BR HZ			0.00	28.97	29.98	1.8	03	3.6	13	04	11	03	31									
< MONTHLY AVERAGES											TOTALS-->		2.02		29.01		30.03		1.5		27		5.1		<- MONTHLY AVERAGES						
- .3											- .3		- .3		- .3		<----- DEPARTURE FROM NORMAL ----->		-1.11		SUNSHINE, CLOUD, & VISIBILITY TABLES ON PAGE 3										
DEGREE DAYS											GREATEST 24-HR PRECIPITATION: 1.22 DATE: 19-20				SEA LEVEL PRESSURE DATE TIME																
MONTHLY TOTAL DEPARTURE											GREATEST 24-HR SNOWFALL: DATE:				MAXIMUM : 30.27 01 0853																
SEASON TO DATE TOTAL DEPARTURE											GREATEST SNOW DEPTH: 0 DATE:				MINIMUM : 29.82 20 1740																
HEATING: 0 0 0 0											NUMBER OF DAYS WITH =>				MAXIMUM TEMP ≥ 90: 10				MINIMUM TEMP ≤ 32: 0				PRECIPITATION ≥ 0.01 INCH: 10								
COOLING: 338 -3 1042 -20															MAXIMUM TEMP ≤ 32: 0				MINIMUM TEMP ≤ 0: 0				PRECIPITATION ≥ 0.10 INCH: 5								
															THUNDERSTORMS: 7				HEAVY FOG: 1				SNOWFALL ≥ 1.0 INCH: 0								

HOURLY PRECIPITATION

(WATER EQUIVALENT IN INCHES)

KNOXVILLE, TN

AUGUST 1997

TYS

WBAN # 13891

DATE	FOR HOUR (LST) ENDING AT												DATE	FOR HOUR (LST) ENDING AT												DATE	Sum if Different (See Note 2)	2400 LST	
	1	2	3	4	5	6	7	8	9	10	11	12		13	14	15	16	17	18	19	20	21	22	23	24			Water	Equiv.
01													01												01		0.00		
02													02												02		0.00		
03													03												03		0.00		
04													04	0.04	T									T	0.09	T	0.09		
05												T	05												05		0.04		
06													06												06		0.00		
07													07												07		0.00		
08													08												08		0.00		
09													09		T	0.06	0.01	0.07	0.03	T				09		0.17			
10													10												10		0.06		
11													11												11		0.01		
12													12												12		0.00		
13													13		T	T									13		0.02		
14													14												14		0.00		
15													15												15		0.00		
16													16												16		0.00		
17													17		T	0.02	0.04		0.11						17		0.17		
18													18												18		0.24		
19													19												19		0.82		
20	0.01	0.26	0.03	T	T								20	T	T										20		0.40		
21													21												21		0.00		
22													22												22		0.00		
23													23												23		0.00		
24													24												24		0.00		
25													25	T											25		T		
26													26												26		0.00		
27													27												27		0.00		
28													28												28		0.00		
29													29												29		0.00		
30													30												30		0.00		
31													31												31		0.00		

MAXIMUM SHORT DURATION PRECIPITATION (See Note 1)

Time Period (Minutes)	5	10	15	20	30	45	60	80	100	120	150	180
Precipitation (Inches)	.20	.36	.46	.57	.66	.81	.81	.81	.82	.83	.83	.85
Ending Date	20	19	19	19	19	19	19	19	19	20	20	20
Ending Time (Hour/Min)	0150	2242	2248	2252	2258	2312	2312	2312	2358	0020	0020	0122

Date and time are not entered for TRACE amounts.

Note 1: NCDC derives these data from one-minute ASOS values. The table is not printed when inconsistent with ASOS hourly totals.

Note 2: The sum of the hourly totals is given when it differs from the daily total. NWS does not edit ASOS hourly values but may edit daily and monthly totals. Hourly, daily, and monthly totals are printed as reported by the ASOS site.

OBSERVATIONS AT 3-HOURLY INTERVALS

KNOXVILLE, TN

AUGUST 1997

TYS

WBAN # 13891

HOUR (LST)	≤ 12K FEET		SATELLITE		WEATHER	TEMPERATURE °F				WIND		PRESSURE (INCHES, HG)		HOUR (LST)	≤ 12K FEET		SATELLITE		WEATHER	TEMPERATURE °F				WIND		PRESSURE (INCHES, HG)									
	SKY COVER	CEILING 100'S OF FT	OBSERVATION TIME (LST)	EFF CLD AMT Oktas		VISIBILITY (MILES)	DRY BULB	DEW POINT	WET BULB	RELATIVE HUMIDITY (PCT)	SPEED (MPH)	DIRECTION TENS OF DEG	STATION		SEA LEVEL	SKY COVER	CEILING 100'S OF FT	OBSERVATION TIME (LST)		EFF CLD AMT Oktas	VISIBILITY (MILES)	DRY BULB	DEW POINT	WET BULB	RELATIVE HUMIDITY (PCT)	SPEED (MPH)	DIRECTION TENS OF DEG	STATION	SEA LEVEL						
																														DRY BULB	DEW POINT	WET BULB	RELATIVE HUMIDITY (PCT)	SPEED (MPH)	DIRECTION TENS OF DEG
SUNRISE: 0544						AUG 01						SUNSET: 1941						SUNRISE: 0548						AUG 07						SUNSET: 1935					
01	CLR	NC			10.00	68	57	61	68	3	33	29.17	30.19	01	FEW	NC			10.00	67	58	62	73	7	06	29.08	30.10								
04	CLR	NC			10.00	61	58	59	90	0	00	29.18	30.20	04	BKN	085			10.00	66	57	61	73	10	04	29.08	30.10								
07	CLR	NC			10.00	62	59	60	90	0	00	29.22	30.25	07	SCT	NC			10.00	65	57	60	76	7	02	29.11	30.13								
10	FEW	NC			10.00	75	61	66	62	5	VR	29.23	30.26	10	FEW	NC			10.00	73	60	65	64	8	09	29.14	30.16								
13	FEW	NC			10.00	81	58	67	46	5	VR	29.17	30.19	13	FEW	NC			10.00	82	58	67	44	6	VR	29.11	30.13								
16	FEW	NC			10.00	83	59	68	44	8	36	29.10	30.12	16	FEW	NC			10.00	85	55	66	36	6	33	29.06	30.08								
19	CLR	NC			10.00	81	59	67	47	6	36	29.08	30.10	19	CLR	NC			10.00	80	57	66	45	6	05	29.08	30.10								
22	CLR	NC			10.00	74	61	66	64	0	00	29.10	30.12	22	FEW	NC			10.00	75	59	65	58	3	15	29.11	30.13								
SUNRISE: 0544						AUG 02						SUNSET: 1940						SUNRISE: 0549						AUG 08						SUNSET: 1934					
01	CLR	NC			10.00	66	61	63	84	0	00	29.10	30.11	01	CLR	NC			8.00	68	63	65	84	0	00	29.12	30.14								
04	CLR	NC			9.00	62	61	61	96	0	00	29.09	30.11	04	SCT	NC			6.00	66	63	64	90	0	00	29.12	30.14								
07	CLR	NC			5.00	64	61	62	90	3	17	29.13	30.15	07	CLR	NC			6.00	65	61	63	87	3	04	29.17	30.19								
10	CLR	NC			10.00	78	60	67	54	6	29	29.13	30.15	10	CLR	NC			8.00	78	62	68	58	3	VR	29.17	30.19								
13	CLR	NC			10.00	84	59	68	43	5	VR	29.08	30.10	13	SCT	NC			8.00	80	63	69	56	7	27	29.14	30.16								
16	SCT	NC			10.00	87	55	67	34	3	VR	29.04	30.06	16	SCT	NC			8.00	81	63	69	54	9	30	29.09	30.11								
19	CLR	NC			10.00	84	58	68	41	5	27	29.02	30.03	19	FEW	NC			7.00	73	65	68	76	3	10	29.08	30.10								
22	CLR	NC			10.00	75	64	68	69	3	18	29.04	30.05	22	CLR	NC			8.00	73	65	68	76	5	23	29.11	30.12								
SUNRISE: 0545						AUG 03						SUNSET: 1939						SUNRISE: 0550						AUG 09						SUNSET: 1933					
01	CLR	NC			7.00	68	65	66	90	3	02	29.04	30.06	01	OVC	120			5.00	70	67	68	90	0	00	29.10	30.12								
04	CLR	NC			6.00	66	62	64	87	0	00	29.05	30.07	04	OVC	100			10.00	73	59	64	62	0	00	29.09	30.10								
07	CLR	NC			6.00	65	63	64	93	3	06	29.07	30.09	07	OVC	100			6.00	70	65	67	84	3	02	29.12	30.14								
10	CLR	NC			8.00	79	65	70	62	0	00	29.08	30.09	10	OVC	085			5.00	70	63	66	79	7	03	29.14	30.16								
13	FEW	NC			9.00	86	63	71	46	7	29	29.04	30.06	13	OVC	080			4.00	72	63	66	73	0	00	29.14	30.16								
16	FEW	NC			7.00	88	62	71	42	6	VR	28.99	30.01	16	BKN	095			3.00	68	66	67	93	7	28	29.12	30.14								
19	CLR	NC			9.00	85	64	71	50	5	29	28.98	29.99	19	FEW	NC			1.50	66	65	65	96	8	31	29.10	30.13								
22	CLR	NC			6.00	75	67	70	76	0	00	28.99	30.01	22	OVC	044			4.00	66	64	65	93	0	00	29.13	30.16								
SUNRISE: 0546						AUG 04						SUNSET: 1938						SUNRISE: 0551						AUG 10						SUNSET: 1932					
01	CLR	NC			6.00	72	65	67	79	0	00	28.97	29.98	01	OVC	040			3.00	65	64	64	97	5	33	29.11	30.14								
04	CLR	NC			4.00	69	66	67	90	3	22	28.96	29.98	04	OVC	055			3.00	65	63	64	93	3	05	29.09	30.11								
07	CLR	NC			4.00	70	65	67	84	0	00	28.97	29.98	07	OVC	045			1.50	66	64	65	93	0	00	29.14	30.16								
10	CLR	NC			5.00	81	68	72	65	8	26	28.95	29.96	10	OVC	030			3.00	68	66	67	93	0	00	29.16	30.19								
13	SCT	NC			8.00	89	63	72	42	10	29	28.92	29.93	13	BKN	030			6.00	74	67	69	79	3	VR	29.15	30.18								
16	SCT	NC			5.00	87	68	74	53	12	29	28.87	29.88	16	BKN	060			10.00	79	68	72	69	7	33	29.10	30.12								
19	SCT	NC			4.00	83	70	74	65	9	28	28.84	29.85	19	FEW	NC			9.00	79	69	72	72	5	02	29.09	30.11								
22	OVC	055			10.00	74	67	69	79	5	16	28.89	29.91	22	OVC	043			8.00	74	70	71	88	5	33	29.13	30.15								
SUNRISE: 0547						AUG 05						SUNSET: 1937						SUNRISE: 0552						AUG 11						SUNSET: 1931					
01	FEW	NC			3.00	71	70	70	96	0	00	28.88	29.89	01	CLR	NC			7.00	71	69	70	94	6	26	29.11	30.13								
04	OVC	056			2.50	70	70	70	100	0	00	28.88	29.89	04	FEW	NC			4.00	70	68	69	93	0	00	29.11	30.13								
07	VV	001			< .25	68	68	68	100	0	00	28.91	29.92	07	FEW	NC			6.00	69	68	68	96	0	00	29.15	30.17								
10	FEW	NC			7.00	77	66	70	69	7	VR	28.93	29.94	10	SCT	NC			8.00	77	71	73	82	3	VR	29.16	30.17								
13	OVC	035			6.00	74	69	71	85	6	30	28.92	29.94	13	SCT	NC			10.00	85	69	74	59	7	26	29.14	30.16								
16	BKN	095			10.00	79	66	70	65	3	VR	28.92	29.93	16	SCT	NC			10.00	88	68	74	52	0	00	29.08	30.09								
19	SCT	NC			10.00	78	65	70	64	6	33	28.93	29.95	19	SCT	NC			10.00	84	70	74	63	0	00	29.08	30.09								
22	CLR	NC			10.00	68	58	62	70	5	07	28.98	30.01	22	BKN	075			10.00	77	72	74	85	6	20	29.11	30.13								
SUNRISE: 0548						AUG 06						SUNSET: 1936						SUNRISE: 0552						AUG 12						SUNSET: 1930					
01	CLR	NC			10.00	66	58	61	75	6	02	29.00	30.03	01	CLR	NC			10.00	74	71	72	91	3	24	29.10	30.11								
04	CLR	NC			10.00	62	57	59	84	7	06	29.00	30.02	04	CLR	NC			7.00	72	70	71	94	0	00	29.10	30.11								
07	FEW	NC			8.00	63	58	60	84	7	05	29.05	30.07	07	SCT	NC			6.00	72	69	70	91	0	00	29.15	30.16								
10	FEW	NC			10.00	74	60	65	62	6	VR	29.07	30.09	10	BKN	120			9.00	81	71	74	72	6	VR	29.15	30.16								
13	SCT	NC			10.00	78	56	65	47	6	09	29.05	30.07	13	BKN	120			6.00	86	68	74	55	3	VR	29.10	30.11								
16	SCT	NC			10.00	81	53	64	38	7	01	29.04	30.06	16	SCT	NC			9.00	92	65	74	41	10	26	29.04	30.05								
19	CLR	NC			10.00	76	56	64	50	9	05	29.04	30.06	19	SCT	NC			8.00	85	67	73	55	9	24	29.04	30.05								
22	CLR	NC			10.00	68	59	63	73	5	08	29.08	30.10	22	OVC	110			8.00	80	68	72	67	9	23	29.08	30.09								

OBSERVATIONS AT 3-HOURLY INTERVALS

KNOXVILLE, TN

AUGUST 1997

TYS

WBAN # 13891

HOUR (LST)	≤ 12K FEET		SATELLITE		WEATHER	TEMPERATURE °F			RELATIVE HUMIDITY (PCT)	WIND		PRESSURE (INCHES, HG)		HOUR (LST)	≤ 12K FEET		SATELLITE		WEATHER	TEMPERATURE °F			RELATIVE HUMIDITY (PCT)	WIND		PRESSURE (INCHES, HG)																																	
	SKY COVER	CEILING 100'S OF FT	OBSERVATION TIME (LST)	EFF CLD AMT Oktas		VISIBILITY (MILES)	DRY BULB	DEW POINT		WET BULB	SPEED (MPH)	DIRECTION TENS OF DEG	STATION		SEA LEVEL	SKY COVER	CEILING 100'S OF FT	OBSERVATION TIME (LST)		EFF CLD AMT Oktas	VISIBILITY (MILES)	DRY BULB		DEW POINT	WET BULB	SPEED (MPH)	DIRECTION TENS OF DEG	STATION	SEA LEVEL																														
																														TEMPERATURE °F	TEMPERATURE °F	TEMPERATURE °F																											
SUNRISE: 0553						AUG 13						SUNSET: 1929						SUNRISE: 0558						AUG 19						SUNSET: 1922																													
01	CLR	NC			6.00	HZ	77	69	72	77	6	26	29.05	30.06	01	SCT	NC			10.00		73	68	70	84	0	00	29.02	30.03	04	OVC	120			5.00	HZ	76	69	71	79	7	26	29.02	30.03	04	CLR	NC			8.00		70	68	69	93	0	00	29.00	30.01
04	BKN	060			4.00	HZ	75	69	71	82	6	27	29.04	30.06	07	CLR	NC			7.00		69	66	67	90	3	06	29.05	30.06	07	CLR	NC			7.00		69	66	67	90	3	06	29.05	30.06															
10	BKN	100			9.00		84	71	75	65	13	25	29.04	30.05	10	FEW	NC			10.00		80	67	71	64	0	00	29.04	30.06	10	FEW	NC			10.00		80	67	71	64	0	00	29.04	30.06															
13	BKN	100			10.00		86	71	76	61	16	25	28.98	29.99	13	SCT	NC			10.00		87	66	73	50	6	VR	29.01	30.02	13	SCT	NC			10.00		87	66	73	50	6	VR	29.01	30.02															
16	SCT	NC			10.00		88	71	76	57	16	24	28.92	29.93	16	FEW	NC			10.00		90	65	73	44	7	29	28.93	29.94	16	FEW	NC			10.00		90	65	73	44	7	29	28.93	29.94															
19	BKN	090			10.00		84	71	75	65	9	25	28.92	29.93	19	SCT	NC			10.00		84	68	73	59	3	03	28.91	29.93	19	SCT	NC			10.00		84	68	73	59	3	03	28.91	29.93															
22	OVC	090			9.00		78	73	75	85	12	24	28.95	29.96	22	BKN	080			10.00	TS	80	68	72	67	8	21	28.93	29.94	22	BKN	080			10.00	TS	80	68	72	67	8	21	28.93	29.94															
SUNRISE: 0554						AUG 14						SUNSET: 1928						SUNRISE: 0559						AUG 20						SUNSET: 1920																													
01	BKN	027			8.00		75	72	73	90	10	25	28.95	29.96	01	OVC	035			9.00	-RA	69	69	69	100	0	00	28.93	29.94	01	OVC	035			9.00	-RA	69	69	69	100	0	00	28.93	29.94															
04	BKN	011			5.00	BR	73	71	72	94	5	23	28.93	29.95	04	FEW	NC			7.00	-RA	72	70	71	94	8	23	28.88	29.89	04	FEW	NC			7.00	-RA	72	70	71	94	8	23	28.88	29.89															
07	OVC	016			4.00	BR	73	71	72	94	6	26	28.97	29.98	07	OVC	046			7.00	-RA	72	70	71	94	9	25	28.91	29.92	07	OVC	046			7.00	-RA	72	70	71	94	9	25	28.91	29.92															
10	BKN	015			9.00		77	72	74	85	3	30	28.99	30.00	10	OVC	026			10.00		74	70	71	88	14	24	28.89	29.91	10	OVC	026			10.00		74	70	71	88	14	24	28.89	29.91															
13	SCT	NC			10.00		86	69	74	57	9	31	28.95	29.96	13	OVC	017			9.00	-RA	77	71	73	82	14	24	28.87	29.88	13	OVC	017			9.00	-RA	77	71	73	82	14	24	28.87	29.88															
16	SCT	NC			10.00		90	64	73	42	5	VR	28.89	29.89	16	BKN	065			10.00		81	70	73	69	8	28	28.83	29.83	16	BKN	065			10.00		81	70	73	69	8	28	28.83	29.83															
19	CLR	NC			10.00		86	65	72	50	5	30	28.88	29.89	19	BKN	050			10.00		80	69	73	69	7	26	28.83	29.83	19	BKN	050			10.00		80	69	73	69	7	26	28.83	29.83															
22	SCT	NC			10.00		79	69	72	72	6	30	28.90	29.92	22	SCT	NC			9.00		75	70	72	84	3	VR	28.87	29.88	22	SCT	NC			9.00		75	70	72	84	3	VR	28.87	29.88															
SUNRISE: 0555						AUG 15						SUNSET: 1926						SUNRISE: 0559						AUG 21						SUNSET: 1919																													
01	CLR	NC			10.00		76	68	71	77	3	24	28.87	29.88	01	OVC	034			9.00		72	65	67	79	9	03	28.88	29.90	01	OVC	034			9.00		72	65	67	79	9	03	28.88	29.90															
04	SCT	NC			9.00		73	68	70	84	6	23	28.89	29.89	04	BKN	036			9.00		70	63	66	79	3	29	28.88	29.90	04	BKN	036			9.00		70	63	66	79	3	29	28.88	29.90															
07	CLR	NC			7.00		73	70	71	90	7	29	28.92	29.93	07	SCT	NC			6.00	BR	67	63	64	87	3	35	28.92	29.93	07	SCT	NC			6.00	BR	67	63	64	87	3	35	28.92	29.93															
10	BKN	042			10.00		83	71	75	67	14	24	28.94	29.95	10	SCT	NC			7.00		72	62	66	71	5	30	28.94	29.95	10	SCT	NC			7.00		72	62	66	71	5	30	28.94	29.95															
13	BKN	032			9.00		87	71	76	59	12	27	28.93	29.93	13	SCT	NC			10.00		78	60	67	54	5	29	28.90	29.92	13	SCT	NC			10.00		78	60	67	54	5	29	28.90	29.92															
16	BKN	055			9.00		90	68	75	49	6	VR	28.87	29.87	16	SCT	NC			10.00		80	60	67	51	9	26	28.86	29.87	16	SCT	NC			10.00		80	60	67	51	9	26	28.86	29.87															
19	CLR	NC			10.00		87	70	75	57	13	22	28.88	29.89	19	CLR	NC			10.00		75	55	63	50	10	31	28.87	29.89	19	CLR	NC			10.00		75	55	63	50	10	31	28.87	29.89															
22	CLR	NC			8.00		81	72	75	74	10	23	28.94	29.95	22	CLR	NC			10.00		67	57	61	73	5	23	28.92	29.94	22	CLR	NC			10.00		67	57	61	73	5	23	28.92	29.94															
SUNRISE: 0555						AUG 16						SUNSET: 1925						SUNRISE: 0600						AUG 22						SUNSET: 1918																													
01	CLR	NC			7.00		78	72	74	82	8	22	28.95	29.96	01	FEW	NC			10.00		62	58	60	86	0	00	28.94	29.96	01	FEW	NC			10.00		62	58	60	86	0	00	28.94	29.96															
04	CLR	NC			6.00	HZ	77	72	74	85	6	24	28.99	30.00	04	CLR	NC			7.00		59	57	58	93	0	00	28.92	29.94	04	CLR	NC			7.00		59	57	58	93	0	00	28.92	29.94															
07	CLR	NC			5.00	BR	76	73	74	91	7	23	29.05	30.06	07	FEW	NC			10.00		63	58	60	84	3	36	28.97	29.99	07	FEW	NC			10.00		63	58	60	84	3	36	28.97	29.99															
10	SCT	NC			10.00		86	72	76	63	7	23	29.07	30.08	10	SCT	NC			10.00		69	55	61	61	5	04	28.99	30.02	10	SCT	NC			10.00		69	55	61	61	5	04	28.99	30.02															
13	SCT	NC			10.00		91	69	76	49	8	24	29.03	30.04	13	BKN	070			10.00		74	54	62	50	10	33	29.00	30.02	13	BKN	070			10.00		74	54	62	50	10	33	29.00	30.02															
16	FEW	NC			10.00		95	69	77	43	10	24	28.98	29.99	16	SCT	NC			10.00		77	53	63	44	5	01	28.97	29.99	16	SCT	NC			10.00		77	53	63	44	5	01	28.97	29.99															
19	SCT	NC			10.00		91	69	76	49	9	25	28.98	29.99	19	CLR	NC			10.00		74	55	63	52	8	34	28.97	29.99	19	CLR	NC			10.00		74	55	63	52	8	34	28.97	29.99															
22	CLR	NC			10.00		83	69	74	63	9	23	29.05	30.06	22	CLR	NC			10.00		66	57	61	73	6	01	29.02	30.05	22	CLR	NC			10.00		66	57	61	73	6	01	29.02	30.05															
SUNRISE: 0556						AUG 17						SUNSET: 1924						SUNRISE: 0601						AUG 23						SUNSET: 1917																													
01	CLR	NC			10.00		79	70	73	74	9	23	29.02	30.03	01	CLR	NC			10.00		62	58	60	86	3	06	29.05	30.07	01	CLR	NC			10.00		62	58	60	86	3	06	29.05	30.07															
04	CLR	NC			10.00		77	70	72	79	6	28	29.01	30.02	04	CLR	NC			10.00		58	55	56	90	3	01	29.04	30.07	04	CLR	NC			10.00		58	55	56	90	3	01	29.04	30.07															
07	FEW	NC			10.00		77	71	73	82	5	26	29.06	30.07	07	CLR	NC			10.00		58	56	57	93	0	00	29.10	30.12	07	CLR	NC			10.00		58	56	57	93	0	00	29.10	30.12															
10	BKN	030</																																																									

OBSERVATIONS AT 3-HOURLY INTERVALS

KNOXVILLE, TN

AUGUST 1997

TYS

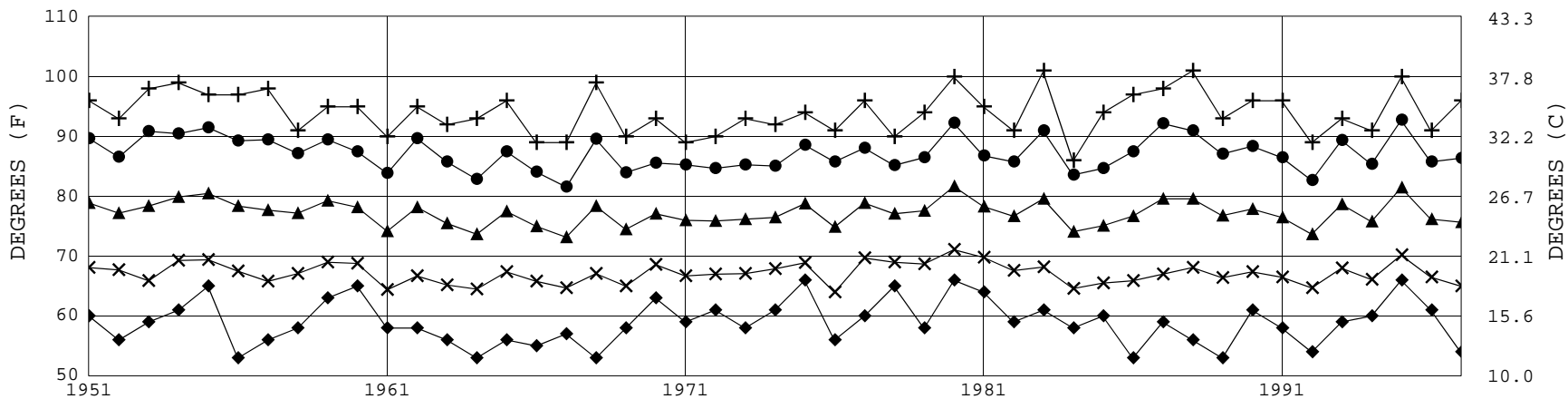
WBAN # 13891

HOUR (LST)	≤ 12K FEET		SATELLITE		WEATHER	TEMPERATURE °F			WIND		PRESSURE (INCHES, HG)		HOUR (LST)	≤ 12K FEET		SATELLITE		WEATHER	TEMPERATURE °F			WIND		PRESSURE (INCHES, HG)											
	SKY COVER	CEILING 100'S OF FT	OBSERVATION TIME (LST)	EFF CLD AMT Oktas		VISIBILITY (MILES)	DRY BULB	DEW POINT	WET BULB	RELATIVE HUMIDITY (PCT)	SPEED (MPH)	DIRECTION TENS OF DEG		STATION	SEA LEVEL	SKY COVER	CEILING 100'S OF FT		OBSERVATION TIME (LST)	EFF CLD AMT Oktas	VISIBILITY (MILES)	DRY BULB	DEW POINT	WET BULB	RELATIVE HUMIDITY (PCT)	SPEED (MPH)	DIRECTION TENS OF DEG	STATION	SEA LEVEL						
SUNRISE: 0602						AUG 25						SUNSET: 1914						SUNRISE: 0607						AUG 31						SUNSET: 1906					
01	SCT	NC			10.00	64	59	61	84	0	00	29.04	30.06	01	CLR	NC			6.00	BR	67	64	65	91	0	00	28.90	29.92							
04	SCT	NC			7.00	61	59	60	93	0	00	29.04	30.06	04	FEW	NC			6.00	BR	67	63	64	87	3	01	28.91	29.93							
07	BKN	120			7.00	63	59	61	87	0	00	29.09	30.11	07	CLR	NC			4.00	BR	66	62	64	87	0	00	28.97	29.99							
10	SCT	NC			10.00	73	60	65	64	6	28	29.09	30.11	10	CLR	NC			9.00		77	64	69	64	3	VR	29.01	30.03							
13	BKN	110			10.00	76	60	66	58	8	27	29.09	30.12	13	FEW	NC			5.00	HZ	86	67	73	53	7	VR	28.98	29.99							
16	SCT	NC			10.00	82	57	66	43	6	VR	29.01	30.03	16	FEW	NC			8.00		90	65	73	44	7	04	28.93	29.94							
19	SCT	NC			10.00	77	60	66	56	5	31	29.02	30.04	19	CLR	NC			7.00		84	67	73	57	6	07	28.93	29.95							
22	BKN	080			10.00	72	63	66	73	0	00	29.06	30.08	22	CLR	NC			7.00		77	68	71	74	8	25	29.02	30.03							
SUNRISE: 0603						AUG 26						SUNSET: 1913						3-HOURLY OBSERVATION NOTES																	
01	SCT	NC			7.00	65	62	63	90	0	00	29.05	30.07	Sky Cover is the amount of the sky obscured. CLR = 0, FEW = 1/8-2/8, SCT = 3/8-4/8, BKN = 5/8-7/8, OVC = 8/8, VV = Vertical Visibility = 8/8. Ceiling is reported in hundreds of feet above ground level for clouds at or below 12,000 feet. NC= No ceiling detected. & = Original observation contained additional weather elements. See page 3 for additional notes.																					
04	BKN	065			7.00	66	62	64	87	0	00	29.04	30.06																						
07	CLR	NC			7.00	65	62	63	90	0	00	29.07	30.09																						
10	FEW	NC			9.00	76	62	67	62	7	27	29.10	30.11																						
13	FEW	NC			10.00	82	62	69	51	3	VR	29.06	30.08																						
16	FEW	NC			10.00	86	58	68	39	7	28	29.00	30.01																						
19	FEW	NC			10.00	82	64	70	55	6	32	28.98	29.99																						
22	CLR	NC			9.00	74	66	69	76	3	15	29.00	30.02																						
SUNRISE: 0604						AUG 27						SUNSET: 1911																							
01	CLR	NC			8.00	70	64	66	82	0	00	28.99	30.01																						
04	SCT	NC			5.00	67	64	65	91	0	00	28.97	29.99																						
07	SCT	NC			5.00	67	63	64	87	0	00	29.01	30.03																						
10	CLR	NC			6.00	78	67	71	69	5	19	29.02	30.03																						
13	SCT	NC			8.00	85	68	73	57	8	25	28.96	29.97																						
16	BKN	090			9.00	88	67	74	50	5	VR	28.90	29.91																						
19	SCT	NC			6.00	84	68	73	59	5	30	28.89	29.91																						
22	SCT	NC			7.00	79	69	72	72	0	00	28.93	29.94																						
SUNRISE: 0605						AUG 28						SUNSET: 1910																							
01	SCT	NC			5.00	74	68	70	82	0	00	28.90	29.91																						
04	CLR	NC			4.00	70	67	68	90	0	00	28.89	29.90																						
07	FEW	NC			4.00	70	67	68	90	5	23	28.91	29.93																						
10	SCT	NC			4.00	77	70	72	79	3	24	28.93	29.95																						
13	SCT	NC			6.00	85	71	75	63	6	26	28.90	29.91																						
16	BKN	100			6.00	86	70	75	59	5	27	28.86	29.86																						
19	FEW	NC			6.00	84	69	74	61	5	30	28.86	29.87																						
22	SCT	NC			5.00	76	70	72	82	5	24	28.88	29.90																						
SUNRISE: 0606						AUG 29						SUNSET: 1909																							
01	CLR	NC			5.00	73	68	70	84	3	23	28.87	29.88																						
04	CLR	NC			4.00	71	67	68	87	0	00	28.87	29.87																						
07	CLR	NC			2.50	69	67	68	93	3	18	28.89	29.90																						
10	FEW	NC			5.00	81	69	73	67	0	00	28.91	29.92																						
13	SCT	NC			7.00	87	66	73	50	6	31	28.88	29.89																						
16	FEW	NC			7.00	89	66	73	47	8	35	28.85	29.85																						
19	SCT	NC			9.00	81	66	71	61	13	04	28.86	29.87																						
22	CLR	NC			9.00	73	67	69	81	3	06	28.90	29.92																						
SUNRISE: 0606						AUG 30						SUNSET: 1907																							
01	CLR	NC			10.00	71	64	67	79	6	04	28.90	29.91																						
04	CLR	NC			10.00	66	61	63	84	8	03	28.90	29.91																						
07	CLR	NC			8.00	65	60	62	84	8	03	28.94	29.96																						
10	CLR	NC			10.00	74	62	66	67	3	VR	28.96	29.98																						
13	SCT	NC			10.00	84	63	70	49	7	31	28.93	29.94																						
16	FEW	NC			8.00	86	63	71	46	5	VR	28.88	29.89																						
19	CLR	NC			10.00	81	63	69	54	5	08	28.88	29.90																						
22	CLR	NC			9.00	74	64	68	71	0	00	28.92	29.93																						

SUMMARY BY HOUR

HOUR (LST)	AVERAGES										RESULTANT WIND (MPH)	
	CEILOMETER	EFF CLD AMT	DRY BULB	DEW POINT	WET BULB	RELATIVE HUMIDITY	PRESSURE (INCHES, HG)		VISIBILITY (MILES)	WIND SPEED (MPH)	DIRECTION	
							STATION	SEA LEVEL				
01			70	65	67	85	29.01	30.02	8.03	3	1	28
02			69	65	66	86	29.00	30.01	7.42	4	1	25
03			68	64	65	87	29.00	30.01	7.35	3	1	33
04			68	64	65	88	29.00	30.02	6.98	3	1	29
05			67	64	65	89	29.01	30.03	6.84	3	0	0
06			66	63	65	90	29.02	30.04	6.77	3	1	29
07			68	64	65	89	29.04	30.06	6.26	3	1	30
08			70	65	67	82	29.05	30.07	7.17	5	1	29
09			73	65	68	75	29.05	30.07	8.02	5	2	25
10			77	65	69	69	29.05	30.07	8.42	4	3	26
11			79	65	70	62	29.05	30.06	8.74	6	3	28
12			81	64	70	58	29.04	30.05	8.84	4	2	28
13			82	64	71	56	29.02	30.04	8.74	6	5	28
14			83	63	70	52	29.01	30.02	8.84	6	4	28
15			84	63	70	50	28.99	30.00	9.10	7	4	29
16			85	63	71	50	28.98	29.99	9.00	6	4	30
17			84	63	70	51	28.97	29.98	8.94	7	4	31
18			83	63	70	53	28.97	29.98	8.87	7	3	30
19			81	64	70	58	28.97	29.99	8.92	6	3	32
20			78	64	69	63	28.98	30.00	9.19	6	2	29
21			76	65	69	71	29.00	30.01	9.00	5	1	28
22			74	66	69	75	29.01	30.02	8.90	4	3	23
23			72	66	68	81	29.01	30.03	8.20	4	1	24
24			71	65	67	83	29.01	30.02	8.23	4	1	23

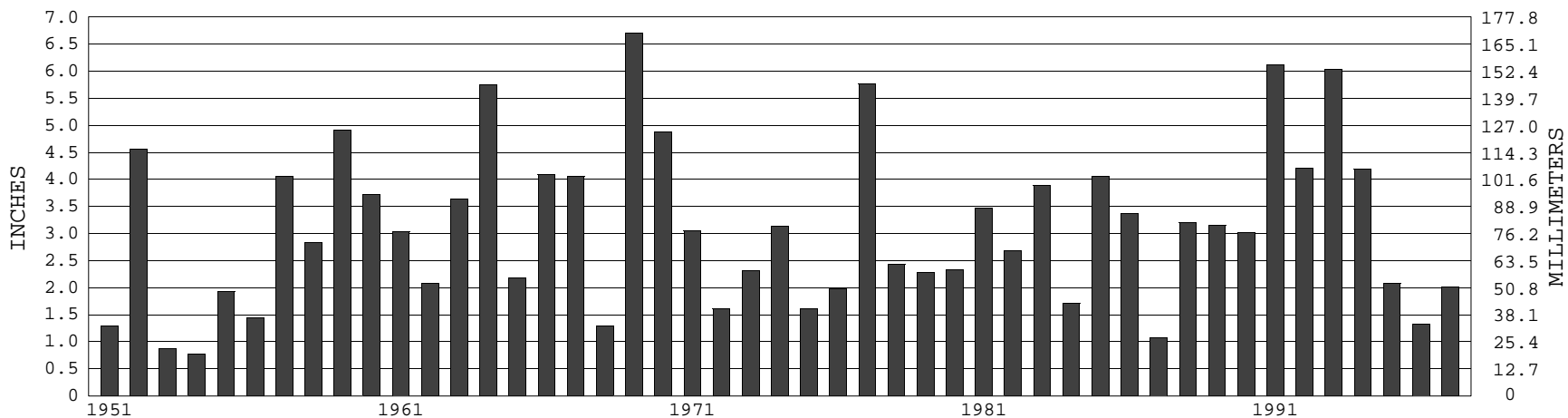
KNOXVILLE, TN AUGUST TEMPERATURES



+ Extreme Max. ● Mean Max. ▲ Mean × Mean Min. ◆ Extreme Min.

Long-Term (1951-1997) Mean: 77.2 1961-1990 Normal: 76.0

KNOXVILLE, TN AUGUST PRECIPITATION



Long-Term (1951-1997) Mean Monthly Total: 3.11

1961-1990 Normal: 3.13



**AUGUST 1997
KNOXVILLE, TN**

LOCAL CLIMATOLOGICAL DATA

NOAA, National Climatic Data Center

I certify that this is an official publication of the National Oceanic and Atmospheric Administration (NOAA). It is compiled using information from weather observing sites operated by NOAA – National Weather Service / Department Of Transportation – Federal Aviation Administration and received at the National Climatic Data Center (NCDC), Asheville, North Carolina 28801.

ACTING DIRECTOR

NOTICE

Effective July 1, 1996, the National Weather Service & Federal Aviation Administration began using the METAR format for Hourly Observations.

We welcome your questions or comments, please contact us at
704-271-4800 (voice), 704-271-4876 (fax),
704-271-4010(TDD)
or orders@ncdc.noaa.gov

For address correction, please return a photocopy of this page to Subscription Services indicating changes

NATIONAL CLIMATIC DATA CENTER
151 PATTON AVE RM 120
ASHEVILLE, NC 28801 –5001

OFFICIAL BUSINESS. PENALTY FOR PRIVATE USE \$300

FIRST CLASS
POSTAGE AND FEES PAID
NOAA
PERMIT G-19